

SA MONEY MARKET REPORT

03 January 2020

THE PREVIOUS WEEK IN REVIEW

1. MONEY MARKET INTEREST RATES

SPOT RATES	13-Dec	20-Dec	03-Jan	Change
Repo Rate	6.50%	6.50%	6.50%	0.00%
Treasury Bill 91 days(D)	7.16%	7.19%	7.11%	-0.08%
Treasury Bill 91 days(Y)	7.29%	7.31%	7.24%	-0.07%
Treasury Bill 182days(D)	7.37%	7.38%	7.26%	-0.12%
Treasury Bill 182days(Y)	7.65%	7.66%	7.55%	-0.11%
Treasury Bill 273days(D)	7.28%	7.30%	7.22%	-0.08%
Treasury Bill 273days(Y)	7.70%	7.72%	7.63%	-0.09%
Treasury Bill 364days(Y)	7.75%	7.73%	7.68%	-0.05%
3 Month NCD	6.75%	6.75%	6.75%	0.00%
6 Month NCD	7.25%	7.25%	7.25%	0.00%
9 Month NCD	7.43%	7.40%	7.40%	0.00%
12 Month NCD	7.63%	7.58%	7.58%	0.00%
18 Month NCD (YTM)	7.44%	7.40%	7.43%	0.02%
24 Month NCD (YTM)	7.46%	7.43%	7.46%	0.03%
36 Month NCD (YTM)	7.61%	7.58%	7.62%	0.03%
R208 (YTM)	6.70%	6.70%	6.72%	0.015%

MONEY MARKET RATES (NACQ)	13-Dec	20-Dec	03-Jan	Change
3 Month NCD	6.75%	6.75%	6.75%	0.00%
6 Month NCD	7.06%	7.06%	7.06%	0.00%
9 Month NCD	7.23%	7.20%	7.20%	0.00%
12 Month NCD	7.42%	7.37%	7.37%	0.00%
18 Month NCD	7.24%	7.20%	7.23%	0.02%
24 Month NCD	7.26%	7.23%	7.26%	0.02%
36 Month NCD	7.40%	7.37%	7.41%	0.03%
R 208	6.70%	6.70%	6.72%	0.015%

MONEY MARKET LIQUIDITY	13-Dec	20-Dec	03-Jan	Change
Shortage (Rm)	56000	56000	56000	0
Notes (Rm)	159623	159834	165096	5262
Reverse Repo (Rm)	0	0	0	0
Debentures (Rm)	0	0	0	0
Liquidity Requirements (Rm)	58391	54830	59701	4871

2. JIBAR RATES (Nominal Terms)

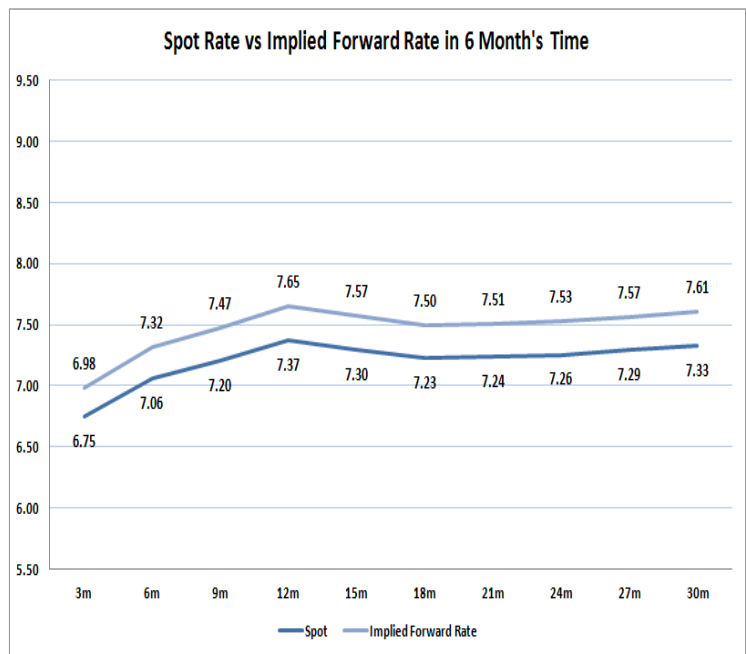
JIBAR (Nominal Terms)	13-Dec	20-Dec	03-Jan	Change
1 Month	6.63%	6.64%	6.63%	-0.01%
3 Month	6.80%	6.80%	6.80%	0.00%
6 Month	7.33%	7.31%	7.30%	-0.01%
9 Month	7.50%	7.47%	7.47%	0.00%
12 Month	7.73%	7.65%	7.65%	0.00%

3. CURRENT AND FUTURE YIELD CURVES (NACQ)

In the graph below the implied forward rates in six months' time are plotted opposite the current spot rates for the corresponding number of months. The implied forward rates are derived from a break-even calculation approach.

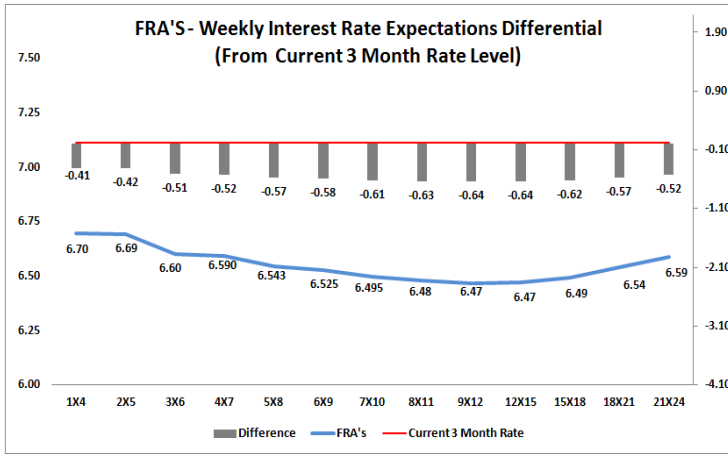
The rates represented in the line graphs below are in NACQ terms.

According to the break-even (forward/forward) calculation, the 12 and 18-month interest rates will be 7.65% and 7.50% respectively in six months time.



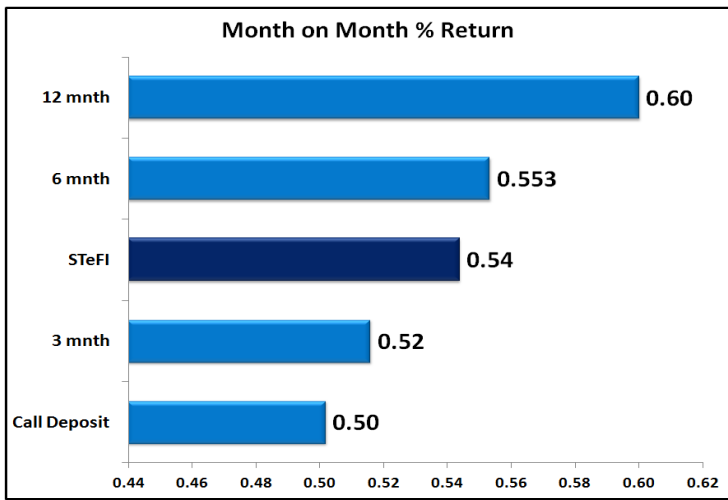
4. FRA RATES (NACQ)

FRA's	13-Dec	20-Dec	03-Jan	Change
1x4	6.80%	6.70%	6.70%	0.00%
3x6	6.71%	6.68%	6.60%	-0.08%
6x9	6.58%	6.53%	6.53%	0.00%
9x12	6.53%	6.46%	6.47%	0.00%
12x15	6.53%	6.47%	6.47%	0.00%
15x18	6.55%	6.49%	6.49%	0.01%
18x21	6.62%	6.54%	6.54%	0.00%
21x24	6.69%	6.60%	6.59%	-0.01%
24x27	6.76%	6.65%	6.63%	-0.02%
27x30	6.84%	6.71%	6.68%	-0.02%

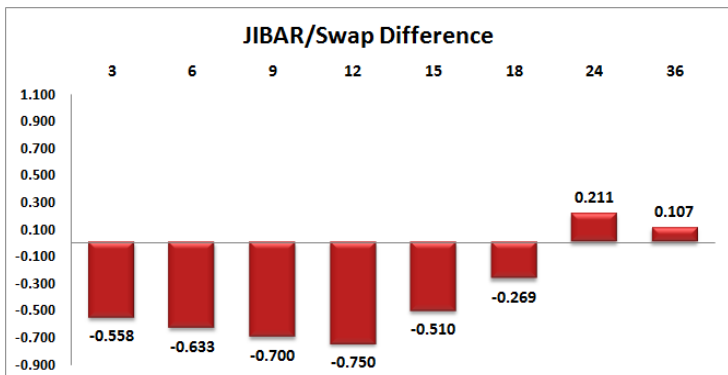
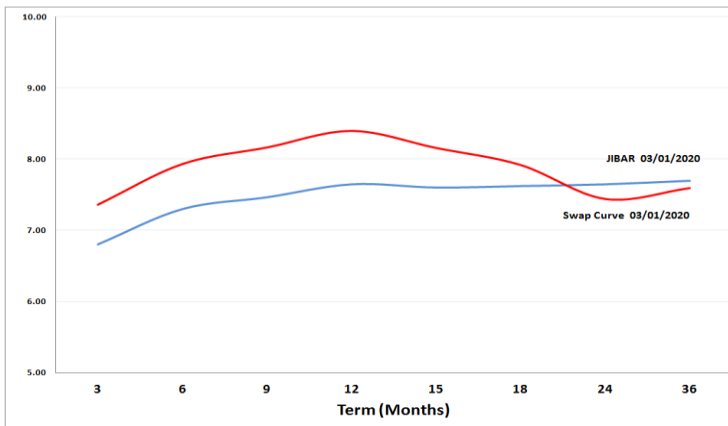


5. MONEY MARKET PERFORMANCE

STeFI (Month on Month) gained 0.54% with the best return 0.60% in the 12-Month area.



6. JIBAR and SWAPS - Curve



7. SARB AND NATIONAL TREASURY OPERATIONS

SARB DEBENTURES			
	Received	Allotted	Av. Rate
7 Days	0	0	0.000%
14 Days	0	0	0.000%
28 Days	0	0	0.000%
56 Days	0	0	0.000%
LONG TERM REVERSE REPO			
14Days			
	Allotted	Av. Rate	
56 Days			
	Allotted	Av. Rate	
TREASURY BILLS			
	Received	Allotted	Av. Rate
91 Days	R4037m	R1000m	7.24%
182 Days	R6234m	R2055m	7.55%
273 Days	R9457m	R2357m	7.63%

8. THE WEEK AHEAD

Date	Time	Country	Event	Month	Previous	Consensus	Forecast
06-Jan-20	02:30:00	Japan	Jibun Bank Manufacturing PMI Final	Dec'19	48.9	48.8	48.8
	03:45:00	China	Caixin Services PMI	Dec'19	53.5		53
	03:45:00	China	Caixin Composite PMI	Dec'19	53.2		52.9
	09:00:00	Germany	Retail Sales MoM	Nov'19	-1.90%	1.00%	1.50%
	09:00:00	Germany	Retail Sales YoY	Nov'19	0.80%	0.90%	1.20%
	09:15:00	SA	Standard Bank PMI	Dec'19	48.6		49
	12:00:00	EA	PPI MoM	Nov'19	0.10%	0.00%	-0.10%
	12:00:00	EA	PPI YoY	Nov'19	-1.90%	-1.90%	-1.70%
	16:45:00	US	Market Composite PMI Final	Dec'19	52	52.2	52.2
	16:45:00	US	Market Services PMI Final	Dec'19	51.6	52.2	52.2
	18:30:00	US	6-Month Bill Auction		1.56%		
	18:30:00	US	3-Month Bill Auction		1.52%		
07-Jan-20	02:30:00	Japan	Jibun Bank Services PMI Final	Dec'19	50.3	50.6	50.6
	02:30:00	Japan	Jibun Bank Composite PMI Final	Dec'19	49.8	49.8	49.8
	05:45:00	Japan	10-Year JGB Auction		-0.04%		
	09:00:00	China	Foreign Exchange Reserves	Dec'19	\$3,096T		\$3.1T
	10:30:00	Germany	Construction PMI	Dec'19	52.5		50.8
	11:00:00	UK	New Car Sales YoY	Dec'19	-1.30%		
	12:00:00	EA	Core Inflation Rate YoY Flash	Dec'19	1.30%	1.20%	1.30%
	12:00:00	EA	Inflation Rate YoY Flash	Dec'19	1.00%	1.30%	1.20%
	12:00:00	EA	Retail Sales MoM	Nov'19	-0.60%	0.60%	0.70%
	12:00:00	EA	Retail Sales YoY	Nov'19	1.40%	1.30%	2.10%
	12:40:00	UK	10-Year Treasury Gilt Auction		0.74%		
	14:00:00	SA	Total New Vehicle Sales	Dec'19	44.74K		39K
	15:30:00	US	Balance of Trade	Nov'19	\$-47.2B	\$-49.0B	\$-43B
	15:30:00	US	Exports	Nov'19	\$207B		\$208.1B
	15:30:00	US	Imports	Nov'19	\$254B		\$251.1B
	15:55:00	US	Redbook YoY 04/JAN		7.80%		
	15:55:00	US	Redbook MoM 04/JAN		-2.80%		
	17:00:00	US	Factory Orders MoM	Nov'19	0.30%	1.20%	-0.80%
	17:00:00	US	ISM Non-Manufacturing PMI	Dec'19	53.9	54.5	53
	17:00:00	US	Factory Orders ex Transportation	Nov'19	0.20%		-0.40%
	20:00:00	US	3-Year Note Auction		1.63%		
	23:30:00	US	API Crude Oil Stock Change 03/JAN		-7.8M		
08-Jan-20	01:30:00	Japan	Average Cash Earnings YoY	Nov'19	0.50%		0.70%
	07:00:00	Japan	Consumer Confidence	Dec'19	38.7		39
	08:00:00	SA	Foreign Exchange Reserves	Dec'19	\$54.893B		\$55B
	09:00:00	Germany	Factory Orders MoM	Dec'19	-0.40%	0.10%	0.30%
	10:30:00	UK	Halifax House Price Index YoY	Dec'19	2.10%	1.50%	1.70%
	11:30:00	UK	Labour Productivity QoQ Final Q3	Dec'19	-0.20%		0.30%
	12:00:00	EA	Business Confidence	Dec'19	-0.23	-0.16	-0.1
	12:00:00	EA	Economic Sentiment	Dec'19	101.3	101.4	101.7
	12:40:00	Germany	10-Year Bund Auction		-0.33%		
	14:00:00	US	MBA 30-Year Mortgage Rate 27/	Dec'19	3.99%		
	14:00:00	US	MBA Mortgage Applications 27/	Dec'19	-5.30%		
	15:15:00	US	ADP Employment Change		67K	150K	151K
	17:30:00	US	EIA Crude Oil Stocks Change 03/JAN				
	17:30:00	US	EIA Gasoline Stocks Change 03/JAN				
	20:00:00	US	10-Year Note Auction		1.84%		
	22:00:00	US	Consumer Credit Change	Nov'19	\$18.91B	\$16.7B	\$20.5B
09-Jan-20	01:50:00	Japan	Stock Investment by Foreigners 04/JAN				
	01:50:00	Japan	Foreign Bond Investment 04/JAN				
	01:50:00	Japan	Stock Investment by Foreigners 28/	Dec'19	¥148.4B		
	01:50:00	Japan	Foreign Bond Investment 28/	Dec'19	¥927.6B		
	03:30:00	China	Inflation Rate YoY	Dec'19	4.50%		4.70%
	03:30:00	China	PPI YoY	Dec'19	-1.40%		-1.20%
	05:45:00	Japan	30-Year JGB Auction		0.43%		
	09:00:00	Germany	Balance of Trade	Nov'19	€21.5B		€19.9B
	09:00:00	Germany	Industrial Production MoM	Nov'19	-1.70%	0.70%	1.00%
	09:00:00	Germany	Balance of Trade s.a	Nov'19	€20.6B	€20B	
	09:00:00	Germany	Current Account	Nov'19	€22.7B		€23.8B
	11:30:00	SA	SACCI Business Confidence	Dec'19	92.7		93
	12:00:00	EA	Unemployment Rate	Nov'19	7.50%	7.50%	8K
	13:00:00	SA	Manufacturing Production YoY	Nov'19	-0.80%		-1.60%
	13:00:00	SA	Manufacturing Production MoM	Nov'19	2.70%		1.40%
	15:30:00	US	Initial Jobless Claims 04/JAN		222K		219K
	15:30:00	US	Continuing Jobless Claims 28/	Dec'19	1728K		1697K
	17:30:00	US	EIA Natural Gas Stocks Change 03/JAN				
	18:30:00	US	4-Week Bill Auction		1.50%		
	18:30:00	US	8-Week Bill Auction		1.52%		
	20:00:00	US	30-Year Bond Auction		2.31%		
10-Jan-20	01:30:00	Japan	Household Spending YoY	Nov'19	-5.10%		-2.70%
	01:30:00	Japan	Household Spending MoM	Nov'19	-11.50%		5.10%
	01:30:00	Japan	Foreign Exchange Reserves	Dec'19	\$131.3B		
	05:00:00	China	Balance of Trade	Dec'19	\$37.93B		\$66.2B
	07:00:00	Japan	Coincident Index Prel	Nov'19	95.3		96.9
	07:00:00	Japan	Leading Economic Index Prel	Nov'19	91.6		93.2
	15:30:00	US	Non Farm Payrolls	Dec'19	266K	168K	165K
	15:30:00	US	Unemployment Rate	Dec'19	3.50%	3.50%	3.60%
	15:30:00	US	Government Payrolls	Dec'19	12K		8K
	15:30:00	US	Average Weekly Hours	Dec'19	34.4	34.4	34.4
	15:30:00	US	Average Hourly Earnings YoY	Dec'19	3.10%	3.10%	3.10%
	15:30:00	US	Participation Rate	Dec'19	63.20%		63.30%
	15:30:00	US	Manufacturing Payrolls	Dec'19	54K		-12K
	15:30:00	US	Nonfarm Payrolls Private	Dec'19	254K	155K	157K
	15:30:00	US	Average Hourly Earnings MoM	Dec'19	0.20%	0.30%	0.20%
	17:00:00	US	Wholesale Inventories MoM	Nov'19	0.00%	0.20%	0.00%
	19:00:00	US	WASDE Report				
	20:00:00	US	Baker Hughes Oil Rig Count 10/JAN				

Major Central Banks Rate Decisions			
Central Bank	Next Meeting	Last Change	Current Interest Rate
European Central Bank	23-Jan-20	10-Mar-16	0.00%
Bank of Japan	21-Jan-20	29-Jan-16	-0.10%
Bank of England	30-Jan-20	02-Aug-18	0.75%
Federal Reserve	29-Jan-20	30-Oct-19	1.75%
SARB	16-Jan-20	18-Jul-19	6.50%