



SA MONEY MARKET REPORT

09 March 2018

THE PREVIOUS WEEK IN REVIEW

1. MONEY MARKET INTEREST RATES

| SPOT RATES | 23-Feb | 02-Mar | 09-Mar | Change |
|--------------------------|--------|--------|--------|---------|
| Repo Rate | 6.75% | 6.75% | 6.75% | 0.00% |
| Treasury Bill 91 days(D) | 7.04% | 7.07% | 7.07% | 0.00% |
| Treasury Bill 91 days(Y) | 7.17% | 7.20% | 7.20% | 0.00% |
| Treasury Bill 182days(D) | 7.05% | 7.01% | 7.04% | 0.03% |
| Treasury Bill 182days(Y) | 7.30% | 7.27% | 7.29% | 0.02% |
| Treasury Bill 273days(D) | 6.93% | 6.95% | 6.96% | 0.01% |
| Treasury Bill 273days(Y) | 7.30% | 7.33% | 7.34% | 0.01% |
| Treasury Bill 364days(Y) | 7.27% | 7.31% | 7.30% | -0.01% |
| 3 Month NCD | 7.03% | 7.08% | 7.08% | 0.00% |
| 6 Month NCD | 7.50% | 7.48% | 7.48% | 0.00% |
| 9 Month NCD | 7.55% | 7.58% | 7.55% | -0.03% |
| 12 Month NCD | 7.80% | 7.80% | 7.83% | 0.03% |
| 18 Month NCD (YTM) | 7.64% | 7.67% | 7.66% | -0.01% |
| 24 Month NCD (YTM) | 7.66% | 7.70% | 7.69% | 0.00% |
| 36 Month NCD (YTM) | 7.93% | 7.98% | 7.98% | 0.00% |
| R204 (YTM) | 6.69% | 6.75% | 6.64% | -0.110% |

| MONEY MARKET RATES (NACQ) | 23-Feb | 02-Mar | 09-Mar | Change |
|---------------------------|--------|--------|--------|---------|
| 3 Month NCD | 6.98% | 6.98% | 6.98% | 0.00% |
| 6 Month NCD | 7.30% | 7.27% | 7.27% | 0.00% |
| 9 Month NCD | 7.35% | 7.37% | 7.35% | -0.02% |
| 12 Month NCD | 7.58% | 7.58% | 7.61% | 0.02% |
| 18 Month NCD | 7.43% | 7.46% | 7.45% | -0.01% |
| 24 Month NCD | 7.45% | 7.48% | 7.48% | 0.00% |
| 36 Month NCD | 7.70% | 7.75% | 7.75% | 0.00% |
| R 204 | 6.69% | 6.75% | 6.64% | -0.110% |

| MONEY MARKET LIQUIDITY | 23-Feb | 02-Mar | 09-Mar | Change |
|-----------------------------|--------|--------|--------|--------|
| Shortage (Rm) | 56000 | 56000 | 56000 | 0 |
| Notes (Rm) | 129731 | 138742 | 134575 | -4167 |
| Reverse Repo (Rm) | 0 | 0 | 0 | 0 |
| Debentures (Rm) | 250 | 580 | 1380 | 800 |
| Liquidity Requirements (Rm) | 56222 | 57773 | 55241 | -2532 |

2. JIBAR RATES (Nominal Terms)

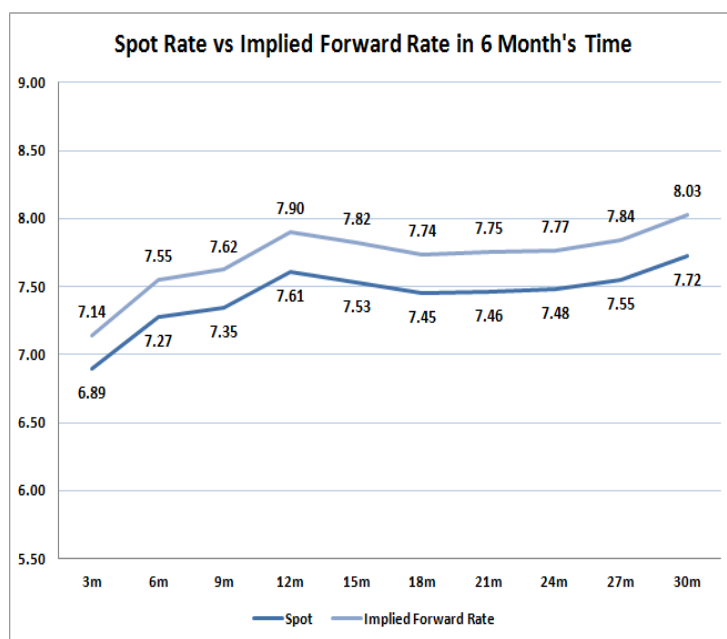
| JIBAR (Nominal Terms) | 23-Feb | 02-Mar | 09-Mar | Change |
|-----------------------|--------|--------|--------|--------|
| 1 Month | 6.89% | 6.89% | 6.89% | 0.00% |
| 3 Month | 7.13% | 7.13% | 7.13% | 0.00% |
| 6 Month | 7.54% | 7.56% | 7.55% | -0.01% |
| 9 Month | 7.63% | 7.66% | 7.63% | -0.03% |
| 12 Month | 7.84% | 7.93% | 7.88% | -0.04% |

3. CURRENT AND FUTURE YIELD CURVES (NACQ)

In the graph below the implied forward rates in six months' time are plotted opposite the current spot rates for the corresponding number of months. The implied forward rates are derived from a break-even calculation approach.

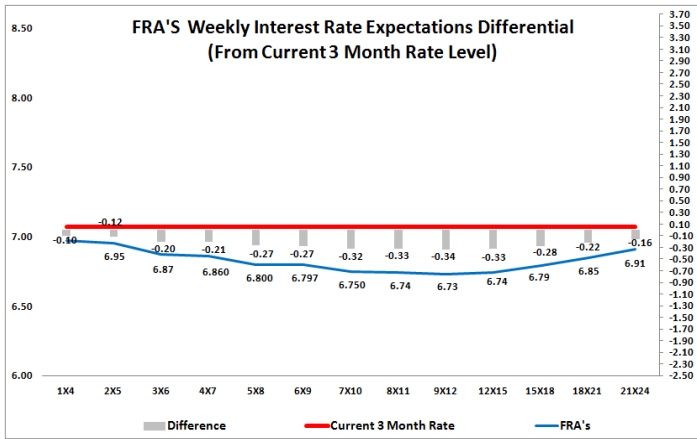
The rates represented in the line graphs below are in NACQ terms.

According to the break-even (forward/forward) calculation, the 12 and 18-month interest rates will be 7.90% and 7.74% respectively in six months time.



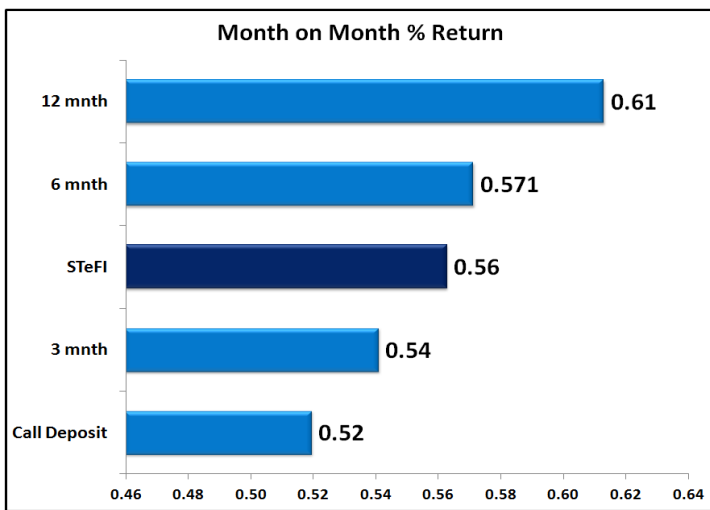
4. FRA RATES (NACQ)

| FRA's | 23-Feb | 02-Mar | 09-Mar | Change |
|-------|--------|--------|--------|--------|
| 1x4 | 7.09% | 7.10% | 6.97% | -0.13% |
| 3x6 | 6.92% | 6.92% | 6.87% | -0.05% |
| 6x9 | 6.72% | 6.86% | 6.80% | -0.06% |
| 9x12 | 6.66% | 6.80% | 6.73% | -0.07% |
| 12x15 | 6.67% | 6.79% | 6.74% | -0.05% |
| 15x18 | 6.71% | 6.83% | 6.79% | -0.04% |
| 18x21 | 6.77% | 6.89% | 6.85% | -0.04% |
| 21x24 | 6.84% | 6.95% | 6.91% | -0.04% |
| 24x27 | 6.90% | 7.01% | 6.97% | -0.04% |
| 27x30 | 6.96% | 7.07% | 7.03% | -0.04% |

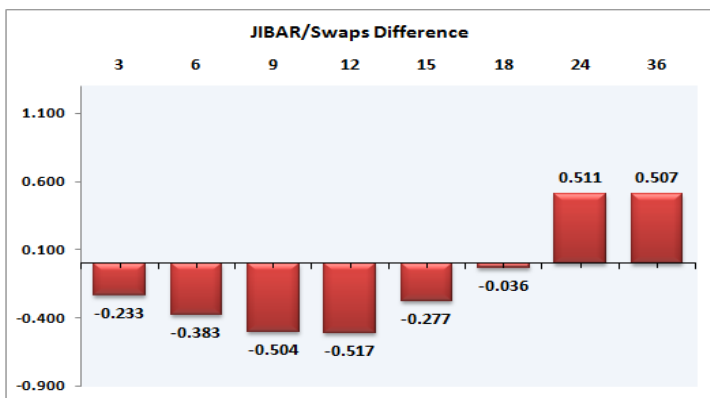
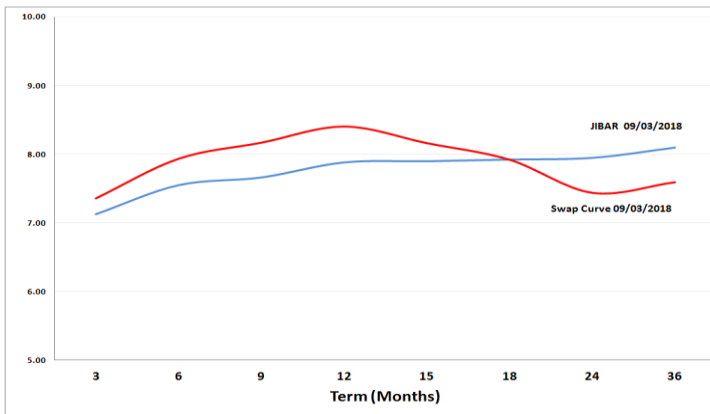


5. MONEY MARKET PERFORMANCE

STeFI (Month on Month) gained 0.56% with the best return 0.61% in the 12-Month area.



6. JIBAR and SWAPS - Curve



7. SARB AND NATIONAL TREASURY OPERATIONS

| SARB DEBENTURES | | | |
|------------------------|----------|----------|----------|
| | Received | Allotted | Av. Rate |
| 7 Days | 671 | 560 | 6.750% |
| 14 Days | 500 | 400 | 6.750% |
| 28 Days | 40 | 40 | 6.740% |
| 56 Days | 0 | 0 | 0.000% |
| LONG TERM REVERSE REPO | | | |
| 14Days | | | |
| | Allotted | Av. Rate | |
| | | | |
| 56 Days | | | |
| | Allotted | Av. Rate | |
| | | | |
| TREASURY BILLS | | | |
| | Received | Allotted | Av. Rate |
| 91 Days | R3835m | R1800m | 7.20% |
| 182 Days | R2995m | R2000m | 7.29% |
| 273 Days | R3263m | R2100m | 7.34% |

8. THE WEEK AHEAD

| Date | Time | Country | Event | Month | Previous | Forecast |
|-----------|----------|---------|---|--------|----------|----------|
| 12-Mar-18 | 04:00:00 | China | FDI - Foreign Direct Investment (YTD) (YoY) | | 0.30% | |
| | 08:00:00 | Japan | Machine Tool Orders (YoY) | | 48.80% | |
| | 17:30:00 | US | 3-Month Bill Auction | | 1.66% | |
| | 17:30:00 | US | 6-Month Bill Auction | | 1.83% | |
| | 19:00:00 | US | 3-Year Note Auction | | 2.28% | |
| | 20:00:00 | US | Monthly Budget Statement | | 49B | -222.6B |
| | 01:50:00 | Japan | Domestic Corporate Goods Price Index (MoM) | | 0.30% | 0.20% |
| | 01:50:00 | Japan | Domestic Corporate Goods Price Index (YoY) | | 2.70% | 2.60% |
| 13-Mar-18 | 13:00:00 | US | NFIB Business Optimism Index | | 106.9 | |
| | 13:00:00 | SA | Manufacturing Production Index (YoY) | Jan'18 | 2% | |
| | 13:00:00 | SA | Manufacturing Production (MoM) | Jan'18 | 1% | |
| | 13:30:00 | UK | Budget Report | | | |
| | 14:30:00 | US | Consumer Price Index Core s.a | Feb'18 | 255.29 | |
| | 14:30:00 | US | Consumer Price Index n.s.a (MoM) | Feb'18 | 247.867 | |
| | 14:30:00 | US | Consumer Price Index (MoM) | Feb'18 | 0.50% | 0.20% |
| | 14:30:00 | US | Consumer Price Index Ex Food & Energy (MoM) | Feb'18 | 0.30% | 0.20% |
| | 14:30:00 | US | Consumer Price Index (YoY) | Feb'18 | 2.10% | 2.10% |
| | 14:30:00 | US | Consumer Price Index Ex Food & Energy (YoY) | Feb'18 | 1.80% | 1.80% |
| | 15:55:00 | US | Redbook index (YoY) | Feb'18 | 3.80% | |
| | 15:55:00 | US | Redbook index (MoM) | Feb'18 | -0.50% | |
| | 17:30:00 | US | 4-Week Bill Auction | | 1.55% | |
| | 20:00:00 | US | 30-Year Bond Auction | | | |
| | 22:30:00 | US | API Weekly Crude Oil Stock | | 5.661M | |
| | 01:50:00 | Japan | BoJ Monetary Policy Meeting Minutes | | | |
| | 01:50:00 | Japan | Machinery Orders (MoM) | | -11.99% | |
| | 01:50:00 | Japan | Machinery Orders (YoY) | | -5% | |
| 14-Mar-18 | 02:00:00 | EU | Eurogroup meeting | | | |
| | 04:00:00 | China | Retail Sales (YoY) | Jan'18 | 9.40% | 9.80% |
| | 04:00:00 | China | Industrial Production (YoY) | Jan'18 | 6.20% | 6.10% |
| | 04:00:00 | China | Fixed Asset Investment (YTD) (YoY) | Jan'18 | 7.20% | 7% |
| | 06:30:00 | Japan | Tertiary Industry Index (MoM) | | -0.20% | |
| | 09:00:00 | Germany | Harmonised Index of Consumer Prices (MoM) | Feb'18 | 0.50% | |
| | 09:00:00 | Germany | Consumer Price Index (YoY) | Feb'18 | 1.40% | |
| | 09:00:00 | Germany | Harmonised Index of Consumer Prices (YoY) | Feb'18 | 1.20% | |
| | 09:00:00 | Germany | Consumer Price Index (MoM) | Feb'18 | 0.50% | |
| | 12:00:00 | EU | Industrial Production w.d.a. (YoY) | | 5.20% | |
| | 12:00:00 | EU | Industrial Production s.a. (MoM) | | 0.40% | |
| | 12:00:00 | Germany | 30-y Bond Auction | | 1.33% | |
| | 14:00:00 | US | MBA Mortgage Applications | | 0.30% | |
| | 14:30:00 | US | Retail Sales ex Autos (MoM) | Feb'18 | 0% | 0.30% |
| | 14:30:00 | US | Retail Sales control group | Feb'18 | 0% | 0.40% |
| | 14:30:00 | US | Retail Sales (MoM) | Feb'18 | -0.30% | 0.30% |
| | 14:30:00 | US | Producer Price Index (MoM) | Feb'18 | 0.40% | 0.20% |
| | 14:30:00 | US | Producer Price Index ex Food & Energy (YoY) | Feb'18 | 2.20% | 2.30% |
| | 14:30:00 | US | Producer Price Index (YoY) | Feb'18 | 2.70% | 2.70% |
| | 14:30:00 | US | Producer Price Index ex Food & Energy (MoM) | Feb'18 | 0.40% | 0.20% |
| | 16:00:00 | US | Business Inventories | | 0.40% | 0.50% |
| | 16:30:00 | US | EIA Crude Oil Stocks change | | 2.408M | |
| | 19:00:00 | US | 10-Year Note Auction | | 2.81% | |
| | 01:50:00 | Japan | Foreign investment in Japan stocks | | -463.4B | |
| | 01:50:00 | Japan | Foreign bond investment | | -1188.5B | |
| 15-Mar-18 | 11:30:00 | SA | Gold Production (YoY) | Jan'18 | -12.40% | |
| | 11:30:00 | SA | Mining Production (YoY) | Jan'18 | 0.10% | |
| | 14:30:00 | US | Continuing Jobless Claims | | 1.87M | |
| | 14:30:00 | US | Initial Jobless Claims | | 231K | |
| | 15:30:00 | US | NY Empire State Manufacturing Index | | 13.1 | 15 |
| | 15:30:00 | US | Import Price Index (MoM) | Feb'18 | 1% | 0.30% |
| | 15:30:00 | US | Export Price Index (YoY) | Feb'18 | 3.40% | |
| | 15:30:00 | US | Import Price Index (YoY) | Feb'18 | 3.60% | |
| | 15:30:00 | US | Export Price Index (MoM) | Feb'18 | 0.80% | 0.40% |
| | 15:30:00 | US | Philadelphia Fed Manufacturing Survey | | 25.8 | 22.5 |
| | 17:00:00 | US | NAHB Housing Market Index | | 72 | 72 |
| | 17:30:00 | US | EIA Natural Gas Storage change | | -57B | |
| | 22:00:00 | US | Total Net TIC Flows | | -119.3B | |
| | 22:00:00 | US | Net Long-Term TIC Flows | | 27.3B | |
| 16-Mar-18 | 06:00:00 | Japan | Industrial Production (MoM) | | -6.60% | |
| | 06:30:00 | Japan | Capacity Utilization | | 2.80% | |
| | 09:00:00 | Germany | Wholesale Price Index (YoY) | | 2% | |
| | 09:00:00 | Germany | Wholesale Price Index (MoM) | | 0.90% | |
| | 12:00:00 | EU | Labour cost | | 1.60% | |
| | 12:00:00 | EU | Consumer Price Index - Core (MoM) | Feb'18 | -1.70% | |
| | 12:00:00 | EU | Consumer Price Index - Core (YoY) | Feb'18 | 1% | |
| | 12:00:00 | EU | Consumer Price Index (MoM) | Feb'18 | -0.90% | |
| | 12:00:00 | EU | Consumer Price Index (YoY) | Feb'18 | 1.20% | |
| | 14:00:00 | UK | BoE Quarterly Bulletin | | | |
| | 14:30:00 | US | Building Permits Change | | 7.40% | |
| | 14:30:00 | US | Housing Starts (MoM) | | 1.326M | 1.28M |
| | 14:30:00 | US | Building Permits (MoM) | | 1.396M | 1.303M |
| | 14:30:00 | US | Housing Starts Change | | 9.70% | |
| | 15:15:00 | US | Industrial Production (MoM) | | -0.10% | 0.20% |
| | 15:15:00 | US | Capacity Utilization | | 77.50% | 77.60% |
| | 16:00:00 | US | JOLTS Job Openings | | 5.811M | |
| | 16:00:00 | US | Michigan Consumer Sentiment Index | | 99.7 | 97 |

| Major Central Banks Rate Decisions | | | |
|------------------------------------|--------------|-------------|-----------------------|
| Central Bank | Next Meeting | Last Change | Current Interest Rate |
| European Central Bank | 26-Apr-18 | 10-Mar-16 | 0.00% |
| Bank of Japan | 27-Apr-18 | 29-Jan-16 | -0.10% |
| Bank of England | 22-Mar-18 | 02-Nov-17 | 0.50% |
| Federal Reserve | 21-Mar-18 | 13-Dec-17 | 1.50% |
| SARB | 28-Mar-18 | 20-Jul-17 | 6.75% |