

## SA MONEY MARKET REPORT

11 January 2019

### THE PREVIOUS WEEK IN REVIEW

#### 1. MONEY MARKET INTEREST RATES

SPOT RATES	28-Dec	04-Jan	11-Jan	Change
Repo Rate	6.75%	6.75%	6.75%	0.00%
Treasury Bill 91 days(D)	7.60%	7.60%	7.53%	-0.07%
Treasury Bill 91 days(Y)	7.75%	7.75%	7.68%	-0.07%
Treasury Bill 182days(D)	7.74%	7.67%	7.63%	-0.04%
Treasury Bill 182days(Y)	8.05%	7.98%	7.94%	-0.04%
Treasury Bill 273days(D)	7.80%	7.69%	7.61%	-0.08%
Treasury Bill 273days(Y)	8.28%	8.16%	8.07%	-0.09%
Treasury Bill 364days(Y)	8.44%	8.26%	8.16%	-0.10%
3 Month NCD	7.10%	7.10%	7.10%	0.00%
6 Month NCD	7.68%	7.68%	7.68%	0.00%
9 Month NCD	7.95%	7.93%	7.93%	0.00%
12 Month NCD	8.30%	8.23%	8.23%	0.00%
18 Month NCD (YTM)	8.20%	8.11%	8.10%	-0.01%
24 Month NCD (YTM)	8.30%	8.17%	8.16%	-0.01%
36 Month NCD (YTM)	8.48%	8.34%	8.31%	-0.03%
R207 (YTM)	5.94%	6.00%	6.07%	0.070%

MONEY MARKET RATES (NACQ)	28-Dec	04-Jan	11-Jan	Change
3 Month NCD	6.92%	6.92%	6.92%	0.00%
6 Month NCD	7.46%	7.46%	7.46%	0.00%
9 Month NCD	7.72%	7.70%	7.70%	0.00%
12 Month NCD	8.05%	7.98%	7.98%	0.00%
18 Month NCD	7.96%	7.87%	7.86%	0.00%
24 Month NCD	8.05%	7.93%	7.92%	-0.01%
36 Month NCD	8.22%	8.09%	8.06%	-0.03%
R 207	6.18%	6.00%	6.07%	0.070%

MONEY MARKET LIQUIDITY	28-Dec	04-Jan	11-Jan	Change
Shortage (Rm)	56000	56000	56000	0
Notes (Rm)	157461	156627	146299	-10328
Reverse Repo (Rm)	0	0	0	0
Debentures (Rm)	157	372	0	-372
Liquidity Requirements (Rm)	54023	56737	58572	1835

#### 2. JIBAR RATES (Nominal Terms)

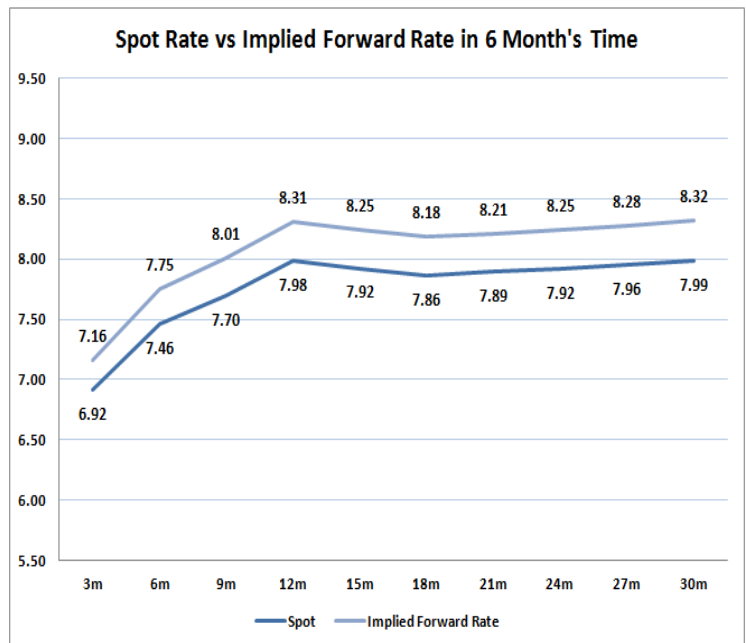
JIBAR (Nominal Terms)	28-Dec	04-Jan	11-Jan	Change
1 Month	6.96%	6.96%	6.98%	0.02%
3 Month	7.15%	7.15%	7.15%	0.00%
6 Month	7.75%	7.75%	7.75%	0.00%
9 Month	8.02%	7.99%	8.00%	0.01%
12 Month	8.35%	8.32%	8.30%	-0.02%

#### 3. CURRENT AND FUTURE YIELD CURVES (NACQ)

In the graph below the implied forward rates in six months' time are plotted opposite the current spot rates for the corresponding number of months. The implied forward rates are derived from a break-even calculation approach.

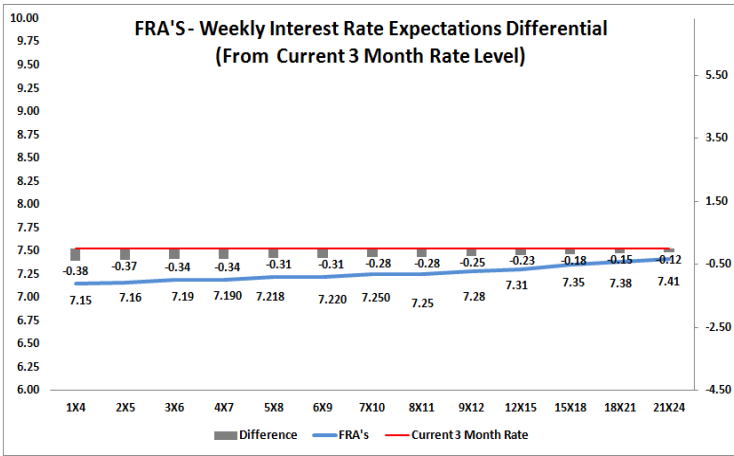
The rates represented in the line graphs below are in NACQ terms.

According to the break-even (forward/forward) calculation, the 12 and 18-month interest rates will be 8.31% and 8.18% respectively in six months time.



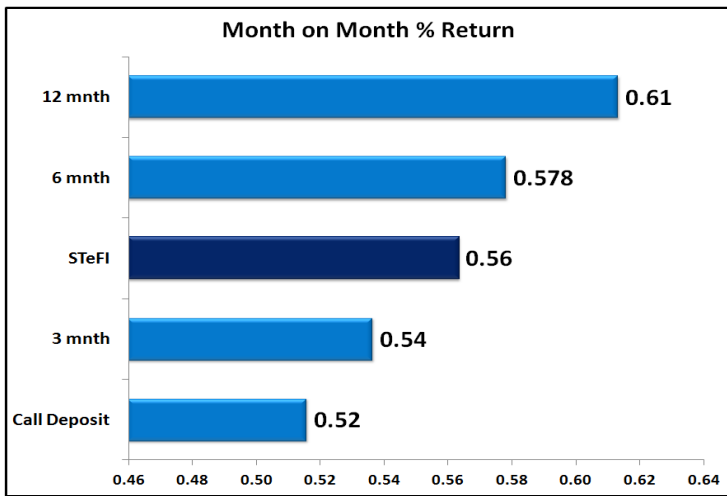
#### 4. FRA RATES (NACQ)

FRA's	28-Dec	04-Jan	11-Jan	Change
1x4	7.18%	7.17%	7.15%	-0.02%
3x6	7.20%	7.20%	7.18%	-0.02%
6x9	7.29%	7.22%	7.21%	-0.01%
9x12	7.37%	7.28%	7.26%	-0.02%
12x15	7.42%	7.31%	7.29%	-0.02%
15x18	7.50%	7.36%	7.33%	-0.03%
18x21	7.56%	7.39%	7.36%	-0.03%
21x24	7.51%	7.42%	7.39%	-0.02%
24x27	7.54%	7.45%	7.42%	-0.02%
27x30	7.58%	7.48%	7.45%	-0.02%

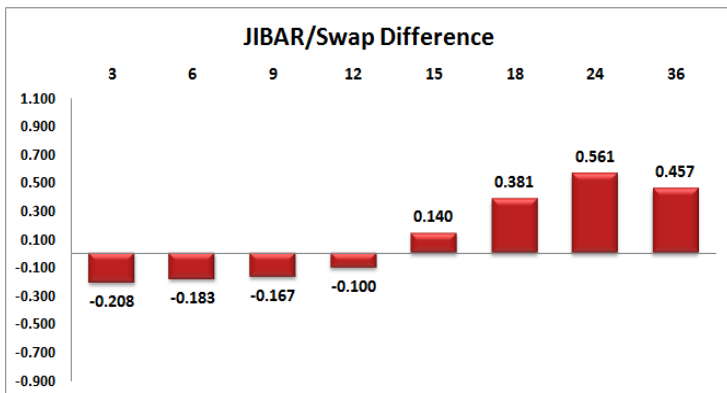
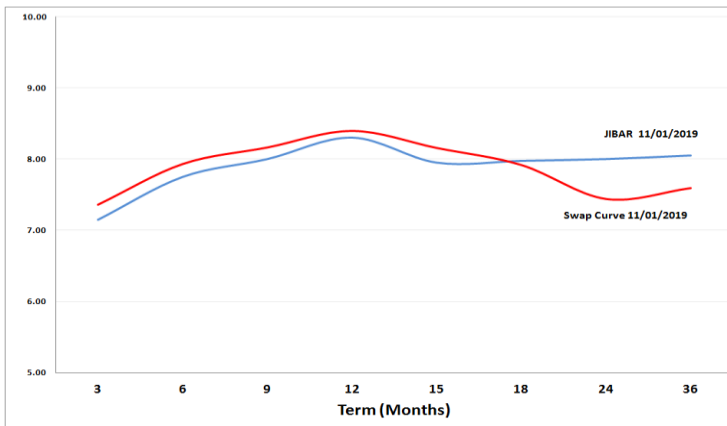


## 5. MONEY MARKET PERFORMANCE

STeFI (Month on Month) gained 0.56% with the best return 0.61% in the 12-Month area.



## 6. JIBAR and SWAPS - Curve



## 7. SARB AND NATIONAL TREASURY OPERATIONS

SARB DEBENTURES			
	Received	Allotted	Av. Rate
7 Days	0	0	0.000%
14 Days	0	0	0.000%
28 Days	0	0	0.000%
56 Days	0	0	0.000%
LONG TERM REVERSE REPO			
14Days			
	Allotted	Av. Rate	
56 Days			
	Allotted	Av. Rate	
TREASURY BILLS			
	Received	Allotted	Av. Rate
91 Days	R7093m	R1800m	7.68%
182 Days	R6228m	R2525m	7.94%
273 Days	R5386m	R2595m	8.07%

## 8. THE WEEK AHEAD

Date	Time	Country	Event	Month	Previous	Forecast
14-Jan-19	02:00:00	Japan	Coming-of-Age Day			
	04:00:00	China	Exports (YoY)	Dec'18	5.40%	5.40%
	04:00:00	China	Trade Balance USD	Dec'18	44.71B	50.73B
	04:00:00	China	Imports (YoY)	Dec'18	3%	3%
	04:00:00	China	Trade Balance CNY	Dec'18	306.04B	
	04:15:00	China	FDI - Foreign Direct Investment (YTD) (YoY)	Dec'18	-1.30%	
	12:00:00	EU	Industrial Production s.a. (MoM)	Nov'18	0.20%	-0.70%
	12:00:00	EU	Industrial Production w.d.a. (YoY)	Nov'18	1.20%	-1.40%
	01:50:00	Japan	Money Supply M2+CD (YoY)	Dec'18	2.30%	
15-Jan-19	02:00:00	UK	UK Parliamentary vote on Brexit			
	08:00:00	Japan	Machine Tool Orders (YoY)	Nov'18	-16.80%	-0.60%
	11:30:00	SA	Gold Production (YoY)	Nov'18	-15.10%	
	11:30:00	SA	Mining Production (YoY)	Nov'18	0.50%	
	12:00:00	EU	Trade Balance n.s.a.	Nov'18	14B	13.7B
	13:00:00	EU	Retail Sales (YoY)	Nov'18	2.20%	
	15:30:00	US	NY Empire State Manufacturing Index		10.9	12
	15:30:00	US	Producer Price Index (YoY)	Dec'18	2.50%	2.50%
	15:30:00	US	Producer Price Index ex Food & Energy (MoM)	Dec'18	0.30%	0.20%
	15:30:00	US	Producer Price Index (MoM)	Dec'18	0.10%	-0.10%
	15:30:00	US	Producer Price Index ex Food & Energy (YoY)	Dec'18	2.70%	2.70%
	15:55:00	US	Redbook index (MoM)	Dec'18	0.80%	0.80%
	15:55:00	US	Redbook index (YoY)	Dec'18	8.90%	8.90%
	17:00:00	US	IBD/TIPP Economic Optimism (MoM)		52.6	
	01:50:00	Japan	Domestic Corporate Goods Price Index (YoY)	Nov'18	2.30%	
	01:50:00	Japan	Machinery Orders (YoY)	Nov'18	4.50%	
16-Jan-19	03:30:00	China	House Price Index	Dec'18	9.30%	8.10%
	06:30:00	Japan	Tertiary Industry Index (MoM)	Nov'18	1.90%	
	09:00:00	Germany	Consumer Price Index (MoM)	Dec'18	0.10%	0.10%
	09:00:00	Germany	Consumer Price Index (YoY)	Dec'18	1.70%	1.70%
	11:30:00	UK	BBA Mortgage Approvals	Dec'18	39.403K	
	11:30:00	UK	Retail Price Index (MoM)	Dec'18	0%	0.10%
	11:30:00	UK	Retail Price Index (YoY)	Dec'18	3.20%	3.20%
	11:30:00	UK	DCLG House Price Index (YoY)	Dec'18	2.70%	
	11:30:00	UK	Producer Price Index - Output (YoY) n.s.a	Dec'18	3.10%	2.90%
	11:30:00	UK	Producer Price Index - Input (YoY) n.s.a	Dec'18	5.60%	4.60%
	11:30:00	UK	Consumer Price Index (YoY)	Dec'18	2.30%	2.30%
	11:30:00	UK	Consumer Price Index (MoM)	Dec'18	0.20%	0.20%
	12:00:00	Germany	30-y Bond Auction		1.04%	
	14:00:00	US	MBA Mortgage Applications	Dec'18	23.50%	
	15:30:00	US	Retail Sales ex Autos (MoM)	Dec'18	0.20%	0.20%
	15:30:00	US	Retail Sales (MoM)	Dec'18	0.20%	0.20%
	15:30:00	US	Export Price Index (YoY)	Nov'18	1.80%	
	15:30:00	US	Import Price Index (YoY)	Nov'18	0.70%	
	17:00:00	US	Business Inventories		0.60%	0.50%
	17:00:00	US	NAHB Housing Market Index	Nov'18	56	57
	17:30:00	US	EIA Crude Oil Stocks change		-1.68M	
	21:00:00	US	Fed's Beige Book			
	23:00:00	US	Total Net TIC Flows		42B	
	23:00:00	US	Net Long-Term TIC Flows		31.3B	
17-Jan-19	02:01:00	UK	RICS Housing Price Balance		-11%	
	09:00:00	Germany	Wholesale Price Index (YoY)	Dec'18	3.50%	
	12:00:00	EU	Consumer Price Index (YoY)	Dec'18	1.60%	1.60%
	12:00:00	EU	Consumer Price Index (MoM)	Dec'18	-0.20%	0%
	12:00:00	EU	Construction Output w.d.a. (YoY)	Nov'18	1.80%	2.90%
	15:00:00	SA	SARB Interest Rate Decision		6.75%	6.50%
	15:30:00	US	Housing Starts Change	Dec'18	3.20%	
	15:30:00	US	Building Permits Change	Dec'18	5%	
	15:30:00	US	Housing Starts (MoM)	Dec'18	1.256M	
	15:30:00	US	Building Permits (MoM)	Dec'18	1.328M	
	15:30:00	US	Philadelphia Fed Manufacturing Survey		9.4	
	17:30:00	US	EIA Natural Gas Storage change		-91B	
	23:30:00	US	API Weekly Crude Oil Stock		-6.27M	
	01:30:00	Japan	National Consumer Price Index (YoY)	Dec'18	0.80%	1.30%
	01:30:00	Japan	National CPI Ex-Fresh Food (YoY)	Dec'18	0.90%	
	01:50:00	Japan	Foreign investment in Japan stocks	Dec'18	-248.5B	
	01:50:00	Japan	Foreign bond investment	Dec'18	-1004.3B	
18-Jan-19	06:30:00	Japan	Industrial Production (YoY)	Dec'18	1.40%	1.30%
	06:30:00	Japan	Industrial Production (MoM)	Dec'18	-1.10%	-1.10%
	06:30:00	Japan	Capacity Utilization	Nov'18	4%	0.10%
	11:00:00	EU	Current Account n.s.a	Nov'18	26.6B	21.7B
	11:00:00	EU	Current Account s.a	Nov'18	23B	
	11:30:00	UK	Retail Sales (YoY)	Dec'18	3.60%	2.20%
	11:30:00	UK	Retail Sales (MoM)	Dec'18	1.40%	0.20%
	16:15:00	US	Capacity Utilization	Dec'18	78.50%	78.50%
	16:15:00	US	Industrial Production (MoM)	Dec'18	0.60%	0.30%
	17:00:00	US	Michigan Consumer Sentiment Index	Dec'18	98.30%	97.10%
	17:00:00	US	Wholesale Inventories	Dec'18	0.80%	0.60%
	20:00:00	US	Baker Hughes US Oil Rig Count			

Major Central Banks Rate Decisions			
Central Bank	Next Meeting	Last Change	Current Interest Rate
European Central Bank	24-Jan-19	10-Mar-16	0.00%
Bank of Japan	23-Jan-19	29-Jan-16	-0.10%
Bank of England	07-Feb-19	02-Aug-18	0.75%
Federal Reserve	30-Jan-18	19-Dec-18	2.50%
SARB	17-Jan-19	22-Nov-18	6.75%