



## SA MONEY MARKET REPORT

12 January 2018

### THE PREVIOUS WEEK IN REVIEW

#### 1. MONEY MARKET INTEREST RATES

SPOT RATES	29-Dec	05-Jan	12-Jan	Change
Repo Rate	6.75%	6.75%	6.75%	0.00%
Treasury Bill 91 days(D)	7.53%	7.44%	7.27%	-0.17%
Treasury Bill 91 days(Y)	7.67%	7.58%	7.40%	-0.18%
Treasury Bill 182days(D)	7.66%	7.38%	7.29%	-0.09%
Treasury Bill 182days(Y)	7.96%	7.66%	7.56%	-0.10%
Treasury Bill 273days(D)	7.29%	7.32%	7.28%	-0.04%
Treasury Bill 273days(Y)	7.71%	7.74%	7.70%	-0.04%
Treasury Bill 364days(Y)	7.91%	7.71%	7.68%	-0.03%
3 Month NCD	7.10%	7.10%	7.10%	0.00%
6 Month NCD	7.58%	7.48%	7.53%	0.05%
9 Month NCD	7.68%	7.63%	7.68%	0.05%
12 Month NCD	7.95%	7.85%	7.90%	0.05%
18 Month NCD (YTM)	7.78%	7.73%	7.77%	0.04%
24 Month NCD (YTM)	7.85%	7.78%	7.82%	0.04%
36 Month NCD (YTM)	8.12%	8.08%	8.14%	0.06%
R204 (YTM)	7.15%	7.05%	7.13%	0.085%

MONEY MARKET RATES (NACQ)	29-Dec	05-Jan	12-Jan	Change
3 Month NCD	6.98%	6.98%	6.98%	0.00%
6 Month NCD	7.37%	7.27%	7.32%	0.05%
9 Month NCD	7.46%	7.42%	7.46%	0.05%
12 Month NCD	7.72%	7.63%	7.68%	0.05%
18 Month NCD	7.56%	7.51%	7.55%	0.04%
24 Month NCD	7.63%	7.56%	7.60%	0.04%
36 Month NCD	7.88%	7.85%	7.90%	0.06%
R 204	7.15%	7.05%	7.13%	0.085%

MONEY MARKET LIQUIDITY	29-Dec	05-Jan	12-Jan	Change
Shortage (Rm)	56000	56000	56000	0
Notes (Rm)	152118	150131	133102	-17029
Reverse Repo (Rm)	0	0	0	0
Debentures (Rm)	0	41	50	9
Liquidity Requirements (Rm)	52313	56259	55401	-858

#### 2. JIBAR RATES (Nominal Terms)

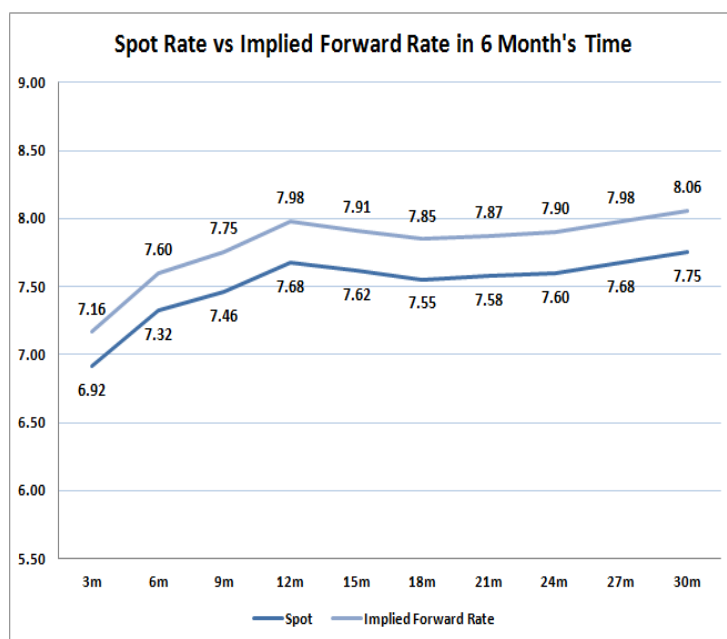
JIBAR (Nominal Terms)	29-Dec	05-Jan	12-Jan	Change
1 Month	6.91%	6.91%	6.91%	0.00%
3 Month	7.16%	7.16%	7.16%	0.00%
6 Month	7.63%	7.56%	7.60%	0.04%
9 Month	7.74%	7.69%	7.74%	0.05%
12 Month	7.94%	7.90%	7.98%	0.08%

#### 3. CURRENT AND FUTURE YIELD CURVES (NACQ)

In the graph below the implied forward rates in six months' time are plotted opposite the current spot rates for the corresponding number of months. The implied forward rates are derived from a break-even calculation approach.

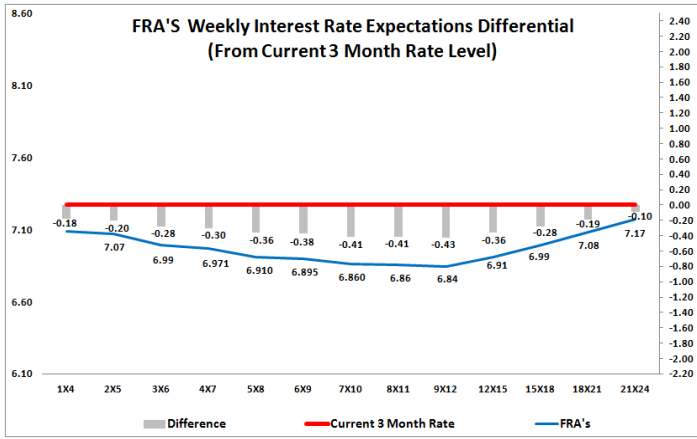
The rates represented in the line graphs below are in NACQ terms.

According to the break-even (forward/forward) calculation, the 12 and 18-month interest rates will be 7.98% and 7.85% respectively in six months time.



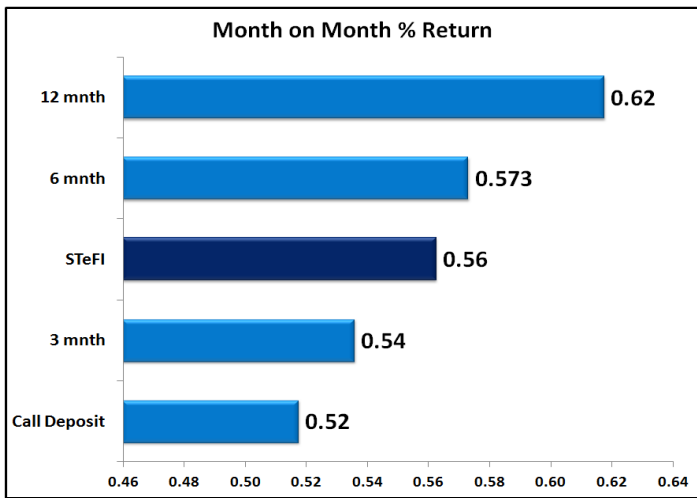
#### 4. FRA RATES (NACQ)

FRA's	29-Dec	05-Jan	12-Jan	Change
1x4	7.06%	7.01%	7.09%	0.08%
3x6	7.02%	6.89%	6.99%	0.10%
6x9	6.90%	6.80%	6.90%	0.10%
9x12	6.90%	6.76%	6.84%	0.09%
12x15	6.96%	6.81%	6.91%	0.10%
15x18	7.01%	6.89%	6.99%	0.11%
18x21	7.07%	6.96%	7.08%	0.13%
21x24	7.14%	7.03%	7.17%	0.15%
24x27	7.20%	7.10%	7.27%	0.17%
27x30	7.26%	7.17%	7.36%	0.19%

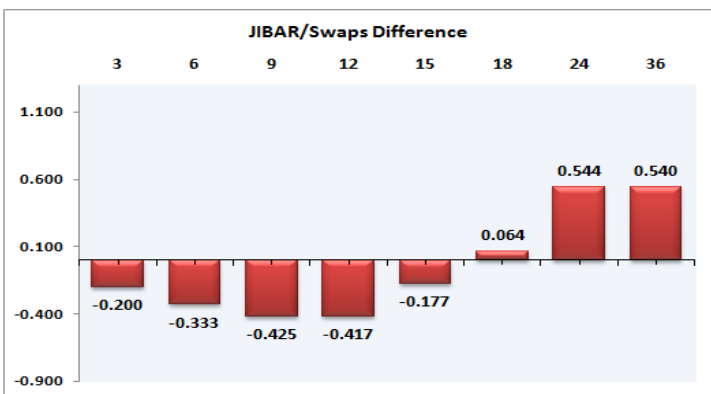
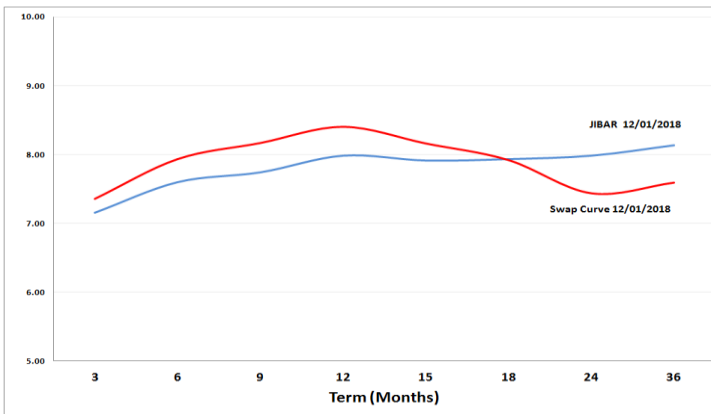


## 5. MONEY MARKET PERFORMANCE

STeFI (Month on Month) gained 0.56% with the best return 0.62% in the 12-Month area.



## 6. JIBAR and SWAPS - Curve



## 7. SARB AND NATIONAL TREASURY OPERATIONS

SARB DEBENTURES			
	Received	Allotted	Av. Rate
7 Days	50	50	6.740%
14 Days	0	0	0.000%
28 Days	0	0	0.000%
56 Days	0	0	0.000%
LONG TERM REVERSE REPO			
14Days			
	Allotted	Av. Rate	
56 Days			
	Allotted	Av. Rate	
TREASURY BILLS			
	Received	Allotted	Av. Rate
91 Days	R7175m	R1800m	7.40%
182 Days	R3838m	R2000m	7.56%
273 Days	R7553m	R2100m	7.70%

## 8. THE WEEK AHEAD

Date	Time	Country	Event	Previous	Forecast
15-Jan-18	02:00:00	US	Martin L. King's Birthday		
	04:00:00	China	M2 Money Supply (YoY)	9.10%	9.10%
	04:00:00	China	Fixed Asset Investment (YTD) (YoY)	7.20%	7.20%
	11:30:00	China	New Loans	1120M	1000M
	04:00:00	China	FDI - Foreign Direct Investment (YTD) (YoY)	9.80%	
	12:00:00	EU	Trade Balance n.s.a.	18.9B	28.2B
	12:00:00	EU	Trade Balance s.a.	19B	22.3B
	01:50:00	Japan	Domestic Corporate Goods Price Index (MoM)	0.40%	0.40%
	01:50:00	Japan	Domestic Corporate Goods Price Index (YoY)	3.50%	3.20%
	16-Jan-18	11:30:00	UK	Retail Price Index (MoM)	0.20%
11:30:00		UK	Retail Price Index (YoY)	3.90%	3.80%
11:30:00		SA	Gold Production (YoY)	-0.90%	
11:30:00		SA	Mining Production (YoY)	5.20%	
11:30:00		UK	DCLG House Price Index (YoY)	4.50%	5.60%
11:30:00		UK	Producer Price Index - Output (MoM) n.s.a	0.30%	0.10%
11:30:00		UK	Producer Price Index - Output (YoY) n.s.a	3%	2.80%
11:30:00		UK	PPI Core Output (MoM) n.s.a	0.20%	0.10%
11:30:00		UK	Producer Price Index - Input (YoY) n.s.a	7.30%	6%
11:30:00		UK	PPI Core Output (YoY) n.s.a	2.20%	2.10%
11:30:00		UK	Producer Price Index - Input (MoM) n.s.a	1.80%	0.50%
11:30:00		UK	Core Consumer Price Index (YoY)	2.70%	2.70%
11:30:00		UK	Consumer Price Index (MoM)	0.30%	0.60%
11:30:00		UK	Consumer Price Index (YoY)	3.10%	3.20%
15:30:00		US	NY Empire State Manufacturing Index	18	18.5
18:30:00		US	4-Week Bill Auction	1.28%	
18:30:00		US	3-Month Bill Auction	1.43%	
18:30:00		US	6-Month Bill Auction	1.58%	
20:00:00		US	2-Year Note Auction	1.77%	
01:50:00		Japan	Machinery Orders (MoM)	5%	-1.40%
01:50:00	Japan	Machinery Orders (YoY)	2.30%	-0.70%	
17-Jan-18	09:00:00	Germany	Wholesale Price Index (MoM)	0.50%	
	09:00:00	Germany	Wholesale Price Index (YoY)	3.30%	
	12:00:00	EU	Consumer Price Index - Core (MoM)	-0.10%	0.20%
	12:00:00	EU	Consumer Price Index - Core (YoY)	1.10%	1.10%
	12:00:00	EU	Consumer Price Index (MoM)	0.10%	0.40%
	12:00:00	EU	Consumer Price Index (YoY)	1.40%	1.40%
	12:00:00	Germany	30-y Bond Auction	1.20%	
	13:00:00	US	Retail Sales (YoY)	3.20%	
	14:00:00	SA	MBA Mortgage Applications	8.30%	
	15:55:00	US	Redbook index (MoM)	0.10%	
	15:55:00	US	Redbook index (YoY)	3.40%	
	16:15:00	US	Industrial Production (MoM)	0.20%	0.30%
	16:15:00	US	Capacity Utilization	77.10%	77.30%
	17:00:00	US	NAHB Housing Market Index	74	73
	21:00:00	US	Fed's Beige Book		
	23:00:00	US	Net Long-Term TIC Flows	23.2B	
	23:00:00	US	Total Net TIC Flows	151.2B	
	23:30:00	US	FOMC Member Mester speech		
23:30:00	US	API Weekly Crude Oil Stock	-11.19M		
01:50:00	Japan	Foreign investment in Japan stocks	597.9B		
01:50:00	Japan	Foreign bond investment	173B		
18-Jan-18	02:01:00	UK	RICS Housing Price Balance	0%	
	03:30:00	China	House Price Index	5.10%	
	04:00:00	China	Retail Sales (YoY)	10.20%	10.10%
	04:00:00	China	Industrial Production (YoY)	6.10%	6%
	04:00:00	China	NBS Press Conference		
	04:00:00	China	Gross Domestic Product (YoY)	6.80%	
	04:00:00	China	Gross Domestic Product (QoQ)	1.70%	
	06:00:00	Japan	Industrial Production (YoY)	3.70%	
	06:00:00	Japan	Industrial Production (MoM)	0.50%	
	06:30:00	Japan	Capacity Utilization	0.20%	
	10:15:00	Germany	German Buba President Weidmann speech		
	15:00:00	SA	SARB Interest Rate Decision	6.75%	
	15:30:00	US	Housing Starts Change	3.30%	
	15:30:00	US	Building Permits Change	-1.40%	
	15:30:00	US	Housing Starts (MoM)	1.297M	1.284M
	15:30:00	US	Building Permits (MoM)	1.298M	1.305M
	15:30:00	US	Initial Jobless Claims	261K	
	15:30:00	US	Continuing Jobless Claims	1.867M	
15:30:00	US	Philadelphia Fed Manufacturing Survey	26.2	23.5	
17:30:00	US	EIA Natural Gas Storage change	-359B		
18:00:00	US	EIA Crude Oil Stocks change	-4.948M		
20:00:00	US	10-Year Note Auction	2.58%		
19-Jan-18	09:00:00	Germany	Producer Price Index (MoM)	0.10%	
	09:00:00	Germany	Producer Price Index (YoY)	2.50%	
	11:00:00	EU	Current Account s.a	30.8B	
	11:00:00	EU	Current Account n.s.a	35.8B	
	11:30:00	UK	Retail Sales ex-Fuel (MoM)	1.20%	0%
	11:30:00	UK	Retail Sales (MoM)	1.10%	0.30%
	11:30:00	UK	Retail Sales (YoY)	1.60%	2.10%
	11:30:00	UK	Retail Sales ex-Fuel (YoY)	1.50%	2.70%
17:00:00	US	Michigan Consumer Sentiment Index	95.9	97	
20:00:00	US	Baker Hughes US Oil Rig Count			

### Major Central Banks Rate Decisions

Central Bank	Next Meeting	Last Change	Current Interest Rate
European Central Bank	25-Jan-18	10-Mar-16	0.00%
Bank of Japan	22-Jan-18	29-Jan-16	-0.10%
Bank of England	08-Feb-18	02-Nov-17	0.50%
Federal Reserve	31-Jan-18	13-Dec-17	1.50%
SARB	18-Jan-18	20-Jul-17	6.75%