

SA MONEY MARKET REPORT

20 December 2019

THE PREVIOUS WEEK IN REVIEW

1. MONEY MARKET INTEREST RATES

SPOT RATES	06-Dec	13-Dec	20-Dec	Change
Repo Rate	6.50%	6.50%	6.50%	0.00%
Treasury Bill 91 days(D)	7.09%	7.16%	7.19%	0.03%
Treasury Bill 91 days(Y)	7.22%	7.29%	7.31%	0.02%
Treasury Bill 182days(D)	7.34%	7.37%	7.38%	0.01%
Treasury Bill 182days(Y)	7.62%	7.65%	7.66%	0.01%
Treasury Bill 273days(D)	7.27%	7.28%	7.30%	0.02%
Treasury Bill 273days(Y)	7.69%	7.70%	7.72%	0.02%
Treasury Bill 364days(Y)	7.77%	7.75%	7.73%	-0.02%
3 Month NCD	6.75%	6.75%	6.75%	0.00%
6 Month NCD	7.25%	7.25%	7.25%	0.00%
9 Month NCD	7.43%	7.43%	7.40%	-0.02%
12 Month NCD	7.65%	7.63%	7.58%	-0.05%
18 Month NCD (YTM)	7.50%	7.44%	7.40%	-0.03%
24 Month NCD (YTM)	7.53%	7.46%	7.43%	-0.03%
36 Month NCD (YTM)	7.74%	7.61%	7.58%	-0.03%
R208 (YTM)	6.70%	6.70%	6.70%	0.000%

MONEY MARKET RATES (NACQ)	06-Dec	13-Dec	20-Dec	Change
3 Month NCD	6.75%	6.75%	6.75%	0.00%
6 Month NCD	7.06%	7.06%	7.06%	0.00%
9 Month NCD	7.23%	7.23%	7.20%	-0.02%
12 Month NCD	7.44%	7.42%	7.37%	-0.05%
18 Month NCD	7.29%	7.24%	7.20%	-0.03%
24 Month NCD	7.33%	7.26%	7.23%	-0.02%
36 Month NCD	7.52%	7.40%	7.37%	-0.02%
R 208	6.70%	6.70%	6.70%	0.000%

MONEY MARKET LIQUIDITY	06-Dec	13-Dec	20-Dec	Change
Shortage (Rm)	56000	56000	56000	0
Notes (Rm)	160566	159623	159834	211
Reverse Repo (Rm)	0	0	0	0
Debentures (Rm)	0	0	0	0
Liquidity Requirements (Rm)	55793	58391	54830	-3561

2. JIBAR RATES (Nominal Terms)

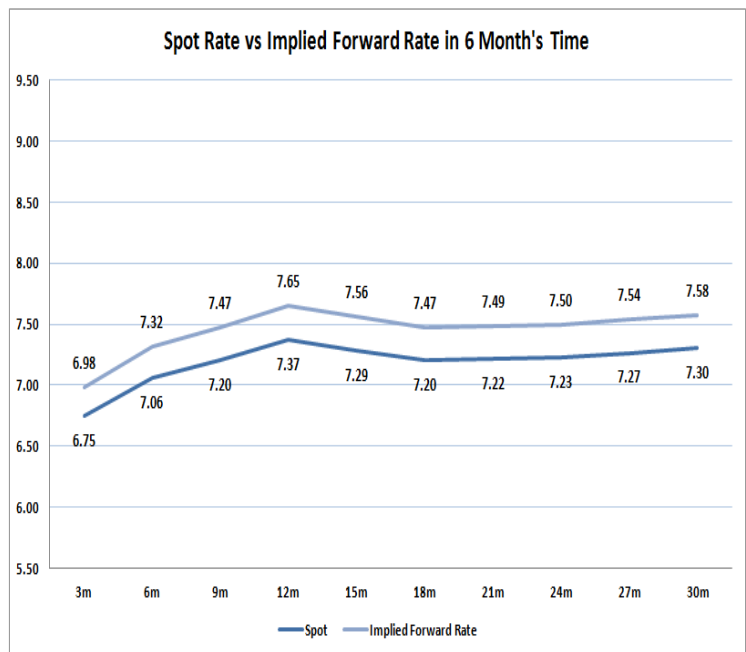
JIBAR (Nominal Terms)	06-Dec	13-Dec	20-Dec	Change
1 Month	6.63%	6.63%	6.64%	0.01%
3 Month	6.80%	6.80%	6.80%	0.00%
6 Month	7.33%	7.33%	7.31%	-0.02%
9 Month	7.51%	7.50%	7.47%	-0.03%
12 Month	7.73%	7.73%	7.65%	-0.08%

3. CURRENT AND FUTURE YIELD CURVES (NACQ)

In the graph below the implied forward rates in six months' time are plotted opposite the current spot rates for the corresponding number of months. The implied forward rates are derived from a break-even calculation approach.

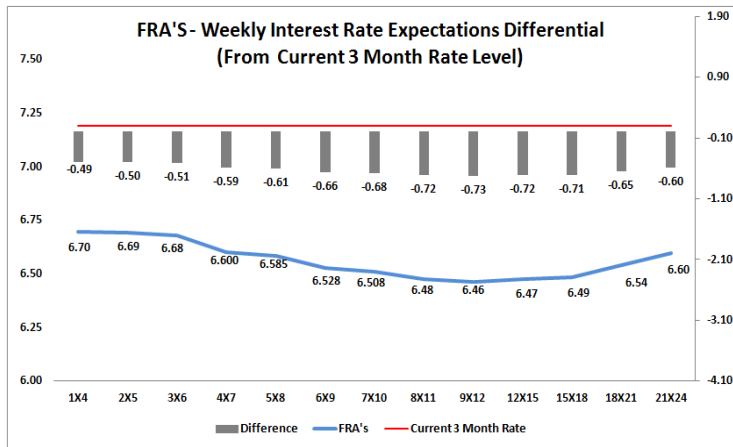
The rates represented in the line graphs below are in NACQ terms.

According to the break-even (forward/forward) calculation, the 12 and 18-month interest rates will be 7.65% and 7.47% respectively in six months time.



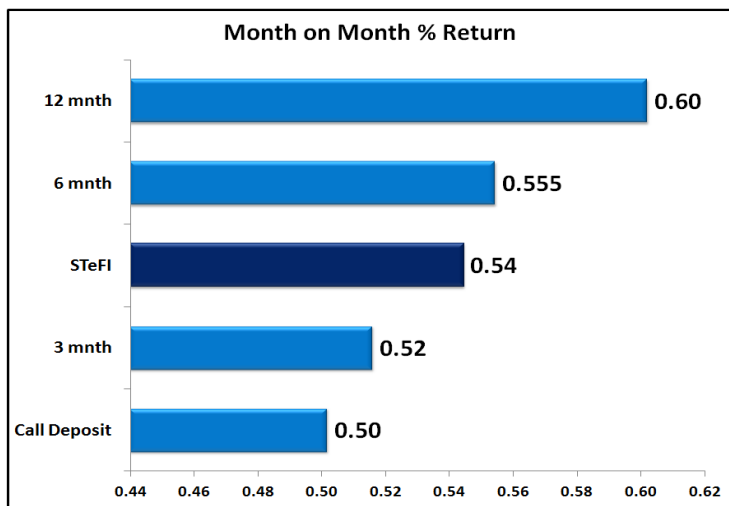
4. FRA RATES (NACQ)

FRA's	06-Dec	13-Dec	20-Dec	Change
1x4	6.81%	6.80%	6.70%	-0.10%
3x6	6.73%	6.71%	6.68%	-0.03%
6x9	6.61%	6.58%	6.53%	-0.05%
9x12	6.58%	6.53%	6.46%	-0.06%
12x15	6.58%	6.53%	6.47%	-0.05%
15x18	6.61%	6.55%	6.49%	-0.06%
18x21	6.68%	6.62%	6.54%	-0.08%
21x24	6.74%	6.69%	6.60%	-0.10%
24x27	6.81%	6.76%	6.65%	-0.11%
27x30	6.87%	6.84%	6.71%	-0.13%

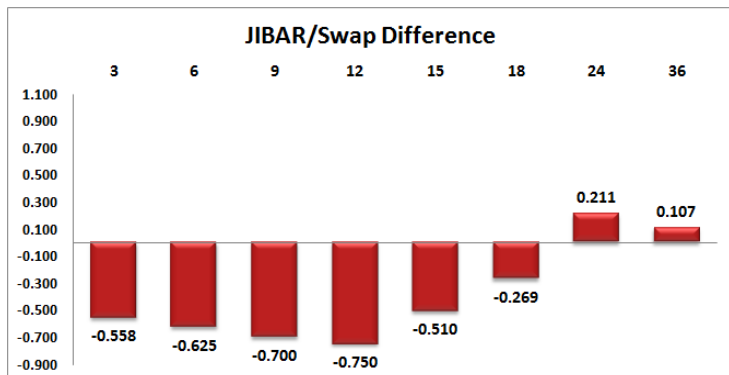
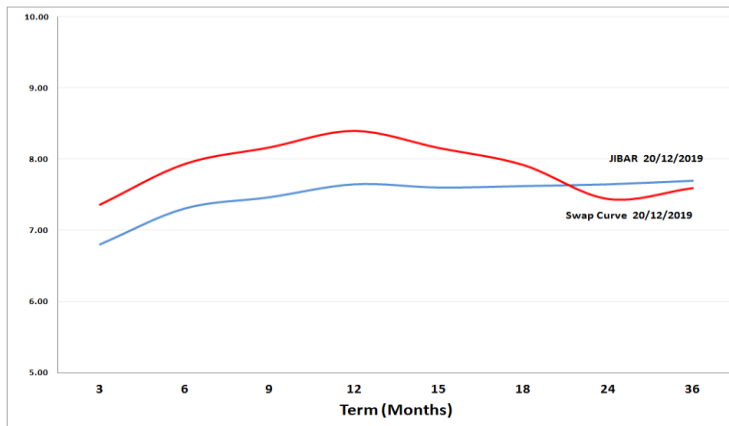


5. MONEY MARKET PERFORMANCE

STeFI (Month on Month) gained 0.54% with the best return 0.60% in the 12-Month area.



6. JIBAR and SWAPS - Curve



7. SARB AND NATIONAL TREASURY OPERATIONS

SARB DEBENTURES			
	Received	Allotted	Av. Rate
7 Days	0	0	0.000%
14 Days	0	0	0.000%
28 Days	0	0	0.000%
56 Days	0	0	0.000%
LONG TERM REVERSE REPO			
14Days			
	Allotted	Av. Rate	
56 Days			
	Allotted	Av. Rate	
TREASURY BILLS			
	Received	Allotted	Av. Rate
91 Days	R1435m	R1000m	7.31%
182 Days	R4953m	R2305m	7.66%
273 Days	R4511m	R2620m	7.72%

8. THE WEEK AHEAD

Date	Time	Country	Event	Month	Previous	Consensus	Forecast
23-Dec-19	06:30:00	Japan	All Industry Activity Index MoM	Oct '19	1.50%	0.20%	-1.80%
	07:00:00	Japan	Coincident Index Final	Oct '19	100.4	94.8	94.8
	07:00:00	Japan	Leading Economic Index Final	Oct '19	91.9	91.8	91.8
	15:30:00	US	Chicago Fed National Activity Index	Nov '19	-0.71	-0.09	-0.3
	17:00:00	US	New Home Sales MoM	Nov '19	-0.70%	-0.80%	-1.60%
	17:00:00	US	New Home Sales	Nov '19	0.733M	0.728M	
	18:30:00	US	3-Month Bill Auction		1.54%		
	18:30:00	US	6-Month Bill Auction		1.55%		
	20:00:00	US	2-Year Note Auction		1.60%		
24-Dec-19	01:50:00	Japan	BoJ Monetary Policy Meeting Minutes				
	15:30:00	US	Durable Goods Orders MoM	Nov '19	0.60%	1.90%	-1.00%
	15:30:00	US	Durable Goods Orders Ex Transp MoM	Nov '19	0.60%	0.10%	-0.70%
	15:30:00	US	Durable Goods Orders ex Defense MoM	Nov '19	0.10%		-0.30%
	15:55:00	US	Redbook YoY 21/	Dec '19	4.60%		
	15:55:00	US	Redbook MoM 21/	Dec '19	-3.80%		
	17:00:00	US	5-Year Note Auction		1.59%		
	17:00:00	US	Richmond Fed Manufacturing Index	Dec '19	-1		-6
	23:30:00	US	API Crude Oil Stock Change /20		4.7M		
26-Dec-19	01:50:00	Japan	Foreign Bond Investment /21	Dec '19	¥511.9B		
	01:50:00	Japan	Stock Investment by Foreigners /21		¥52.1B		
	07:00:00	Japan	Housing Starts YoY	Nov '19	-7.40%	-8.10%	-4.80%
	07:00:00	Japan	Construction Orders YoY	Nov '19	6.40%		5.10%
	14:00:00	US	MBA Mortgage Applications 20/	Dec '19	-5.00%		
	14:00:00	US	MBA 30-Year Mortgage Rate 20/	Dec '19	3.98%		
	15:30:00	US	Initial Jobless Claims /21	Dec '19	234K		215K
	15:30:00	US	Continuing Jobless Claims /14	Dec '19	1722K		1694K
	18:30:00	US	4-Week Bill Auction		1.51%		
	18:30:00	US	8-Week Bill Auction		1.56%		
	20:00:00	US	7-Year Note Auction		1.72%		
		Japan	BoJ Gov Kuroda Speech				
27-Dec-19	01:30:00	Japan	Unemployment Rate	Nov '19	2.40%	2.40%	2.30%
	01:30:00	Japan	Tokyo Core CPI YoY	Dec '19	0.50%	0.60%	0.50%
	01:30:00	Japan	Jobs/applications ratio	Nov '19	1.57	1.57	1.57
	01:30:00	Japan	Tokyo CPI YoY	Dec '19	0.80%		0.70%
	01:50:00	Japan	Industrial Production MoM Prel	Nov '19	-4.50%		2.90%
	01:50:00	Japan	BoJ Summary of Opinions				
	01:50:00	Japan	Retail Sales YoY	Nov '19	-7.10%	-1.70%	-5.80%
	01:50:00	Japan	Industrial Production YoY Prel	Nov '19	-7.40%		-3.60%
	01:50:00	Japan	Retail Sales MoM	Nov '19	-14.40%		4.50%
	03:30:00	China	Industrial Profits (YTD) YoY	Nov '19	-2.90%		-3.20%
	11:30:00	UK	UK Finance Mortgage Approvals	Nov '19	41.219K		41.9K
	14:00:00	SA	Balance of Trade	Nov '19	SAR3.09B	SAR 5B	SAR 4.2B
	17:30:00	US	EIA Natural Gas Stocks Change 20/	Dec '19	-107Bcf		
	18:00:00	US	EIA Crude Oil Stocks Change 20/	Dec '19	-1.085M		
	18:00:00	US	EIA Gasoline Stocks Change 20/	Dec '19	2.529M		
	20:00:00	US	Baker Hughes Oil Rig Count 27/	Dec '19			

Major Central Banks Rate Decisions			
Central Bank	Next Meeting	Last Change	Current Interest Rate
European Central Bank	23-Jan-20	10-Mar-16	0.00%
Bank of Japan	21-Jan-20	29-Jan-16	-0.10%
Bank of England	30-Jan-20	02-Aug-18	0.75%
Federal Reserve	29-Jan-20	30-Oct-19	1.75%
SARB	16-Jan-20	18-Jul-19	6.50%