

SA MONEY MARKET REPORT

23 March 2018

THE PREVIOUS WEEK IN REVIEW

1. MONEY MARKET INTEREST RATES

| SPOT RATES | 09-Mar | 16-Mar | 23-Mar | Change |
|--------------------------|--------|--------|--------|---------|
| Repo Rate | 6.75% | 6.75% | 6.75% | 0.00% |
| Treasury Bill 91 days(D) | 7.07% | 7.11% | 7.05% | -0.06% |
| Treasury Bill 91 days(Y) | 7.20% | 7.24% | 7.17% | -0.07% |
| Treasury Bill 182days(D) | 7.04% | 7.11% | 7.09% | -0.02% |
| Treasury Bill 182days(Y) | 7.29% | 7.37% | 7.35% | -0.02% |
| Treasury Bill 273days(D) | 6.96% | 7.01% | 6.94% | -0.07% |
| Treasury Bill 273days(Y) | 7.34% | 7.40% | 7.32% | -0.08% |
| Treasury Bill 364days(Y) | 7.30% | 7.36% | 7.31% | -0.05% |
| 3 Month NCD | 7.08% | 7.08% | 7.08% | 0.00% |
| 6 Month NCD | 7.48% | 7.48% | 7.48% | 0.00% |
| 9 Month NCD | 7.55% | 7.58% | 7.55% | -0.03% |
| 12 Month NCD | 7.83% | 7.83% | 7.78% | -0.05% |
| 18 Month NCD (YTM) | 7.66% | 7.67% | 7.62% | -0.04% |
| 24 Month NCD (YTM) | 7.69% | 7.70% | 7.65% | -0.05% |
| 36 Month NCD (YTM) | 7.98% | 7.95% | 7.91% | -0.04% |
| R204 (YTM) | 6.64% | 6.72% | 6.59% | -0.135% |

| MONEY MARKET RATES (NACQ) | 09-Mar | 16-Mar | 23-Mar | Change |
|---------------------------|--------|--------|--------|---------|
| 3 Month NCD | 6.98% | 6.98% | 6.98% | 0.00% |
| 6 Month NCD | 7.27% | 7.27% | 7.27% | 0.00% |
| 9 Month NCD | 7.35% | 7.37% | 7.35% | -0.02% |
| 12 Month NCD | 7.61% | 7.61% | 7.56% | -0.05% |
| 18 Month NCD | 7.45% | 7.45% | 7.41% | -0.04% |
| 24 Month NCD | 7.48% | 7.48% | 7.44% | -0.04% |
| 36 Month NCD | 7.75% | 7.72% | 7.69% | -0.04% |
| R 204 | 6.64% | 6.72% | 6.59% | -0.135% |

| MONEY MARKET LIQUIDITY | 09-Mar | 16-Mar | 23-Mar | Change |
|-----------------------------|--------|--------|--------|--------|
| Shortage (Rm) | 56000 | 56000 | 56000 | 0 |
| Notes (Rm) | 134575 | 128332 | 130387 | 2055 |
| Reverse Repo (Rm) | 0 | 0 | 0 | 0 |
| Debentures (Rm) | 1380 | 640 | 160 | -480 |
| Liquidity Requirements (Rm) | 55241 | 56286 | 55574 | -712 |

2. JIBAR RATES (Nominal Terms)

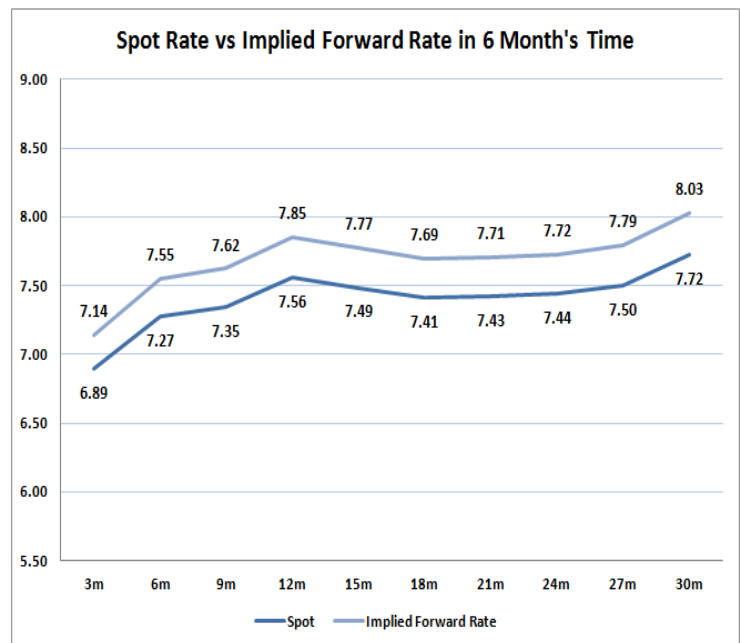
| JIBAR (Nominal Terms) | 09-Mar | 16-Mar | 23-Mar | Change |
|-----------------------|--------|--------|--------|--------|
| 1 Month | 6.89% | 6.89% | 6.90% | 0.01% |
| 3 Month | 7.13% | 7.13% | 7.13% | 0.00% |
| 6 Month | 7.55% | 7.54% | 7.53% | -0.01% |
| 9 Month | 7.63% | 7.63% | 7.63% | 0.00% |
| 12 Month | 7.88% | 7.88% | 7.87% | -0.02% |

3. CURRENT AND FUTURE YIELD CURVES (NACQ)

In the graph below the implied forward rates in six months' time are plotted opposite the current spot rates for the corresponding number of months. The implied forward rates are derived from a break-even calculation approach.

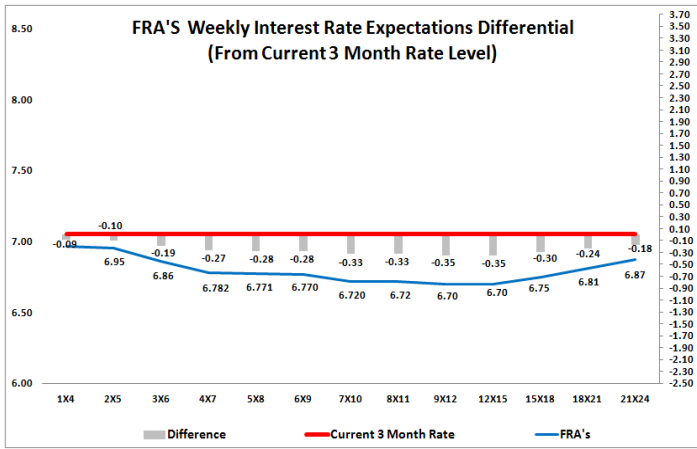
The rates represented in the line graphs below are in NACQ terms.

According to the break-even (forward/forward) calculation, the 12 and 18-month interest rates will be 7.85% and 7.69% respectively in six months time.



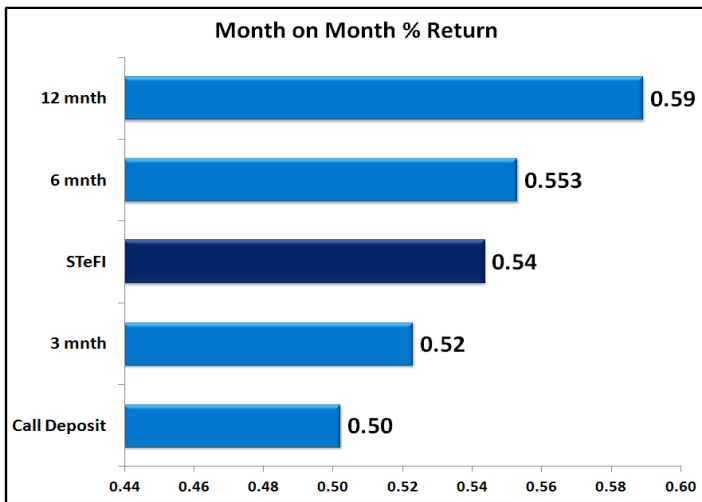
4. FRA RATES (NACQ)

| FRA's | 09-Mar | 16-Mar | 23-Mar | Change |
|-------|--------|--------|--------|--------|
| 1x4 | 6.97% | 6.96% | 6.96% | 0.00% |
| 3x6 | 6.87% | 6.86% | 6.86% | 0.00% |
| 6x9 | 6.80% | 6.77% | 6.77% | 0.00% |
| 9x12 | 6.73% | 6.70% | 6.70% | 0.00% |
| 12x15 | 6.74% | 6.70% | 6.70% | 0.00% |
| 15x18 | 6.79% | 6.75% | 6.75% | 0.00% |
| 18x21 | 6.85% | 6.80% | 6.81% | 0.01% |
| 21x24 | 6.91% | 6.85% | 6.87% | 0.02% |
| 24x27 | 6.97% | 6.90% | 6.93% | 0.03% |
| 27x30 | 7.03% | 6.95% | 6.99% | 0.04% |

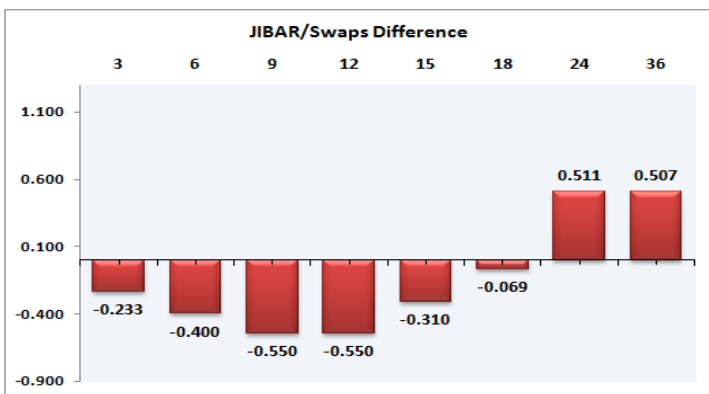
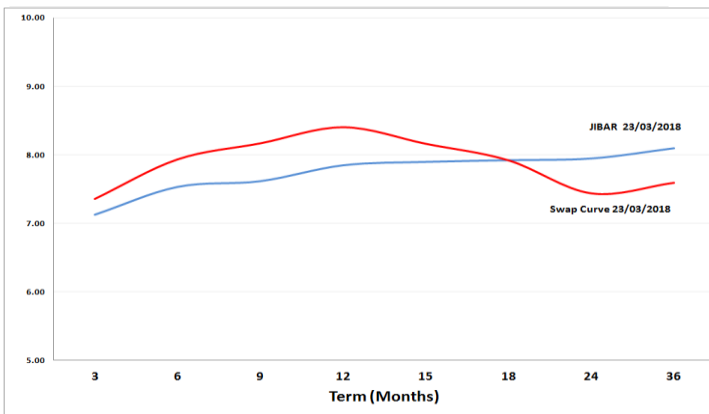


5. MONEY MARKET PERFORMANCE

STeFI (Month on Month) gained 0.54% with the best return 0.59% in the 12-Month area.



6. JIBAR and SWAPS - Curve



7. SARB AND NATIONAL TREASURY OPERATIONS

| SARB DEBENTURES | | | |
|------------------------|----------|----------|----------|
| | Received | Allotted | Av. Rate |
| 7 Days | 0 | 0 | 0.000% |
| 14 Days | 0 | 0 | 0.000% |
| 28 Days | 0 | 0 | 0.000% |
| 56 Days | 0 | 0 | 0.000% |
| LONG TERM REVERSE REPO | | | |
| 14Days | | | |
| | Allotted | Av. Rate | |
| 56 Days | | | |
| | Allotted | Av. Rate | |
| TREASURY BILLS | | | |
| | Received | Allotted | Av. Rate |
| 91 Days | R4892m | R1800m | 7.17% |
| 182 Days | R3675m | R2000m | 7.35% |
| 273 Days | R6033m | R2100m | 7.32% |

8. THE WEEK AHEAD

| Date | Time | Country | Event | Month | Previous | Forecast |
|-----------|-----------|---|---|-------------------------------------|----------|----------|
| 26-Mar-18 | 08:00:00 | Germany | Import Price Index (MoM) | | | 0.50% |
| | 08:00:00 | Germany | Import Price Index (YoY) | | | 0.70% |
| | 16:30:00 | US | Dallas Fed Manufacturing Business Index | | | 37.2 |
| | 17:30:00 | US | 3-Month Bill Auction | | | 1.78% |
| | 17:30:00 | US | 6-Month Bill Auction | | | 1.95% |
| | 19:00:00 | US | 2-Year Note Auction | | | 2.26% |
| | 19:30:00 | US | Fed's William Dudley speech | | | |
| 22:30:00 | US | FOMC Member Mester speech | | | | |
| 01:50:00 | Japan | Corporate Service Price (YoY) | | | 0.70% | |
| 27-Mar-18 | 10:00:00 | EU | M3 Money Supply (YoY) | Feb'18 | 4.60% | |
| | 10:00:00 | EU | Private loans (YoY) | Feb'18 | 2.90% | |
| | 10:00:00 | EU | M3 Money Supply (3m) | Feb'18 | 4.70% | 4.60% |
| | 11:00:00 | EU | Services Sentiment | | 17.5 | |
| | 11:00:00 | EU | Industrial Confidence | | 8 | 7.3 |
| | 11:00:00 | EU | Business Climate | | 1.48 | |
| | 11:00:00 | EU | Economic Sentiment Indicator | | 114.1 | 113.1 |
| | 12:00:00 | EU | Consumer Confidence | | 0.1 | |
| | 13:00:00 | UK | CBI Distributive Trades Survey - Realized (MoM) | | 8% | |
| | 14:55:00 | US | Redbook index (YoY) | Feb'18 | 3.20% | |
| | 14:55:00 | US | Redbook index (MoM) | Feb'18 | -0.10% | |
| | 15:00:00 | US | S&P/Case-Shiller Home Price Indices (YoY) | Feb'18 | 6.30% | 6.10% |
| | 17:00:00 | US | FOMC Member Bostic speech | | 2.02% | |
| | 17:30:00 | US | 4-Week Bill Auction | | 1.72% | |
| 19:00:00 | US | 5-Year Note Auction | | 2.66% | | |
| 22:30:00 | US | API Weekly Crude Oil Stock | | -2.739M | | |
| 28-Mar-18 | 09:00:00 | Germany | Gfk Consumer Confidence Survey | | 10.8 | 10.7 |
| | 13:00:00 | US | MBA Mortgage Applications | | -1.10% | |
| | 14:30:00 | US | Gross Domestic Product Price Index | Q4 (Re) | 2.30% | 2.30% |
| | 14:30:00 | US | Gross Domestic Product Annualized | Q4 (Re) | 2.50% | 2.60% |
| | 14:30:00 | US | Goods Trade Balance | Feb'18 | -74.4B | |
| | 15:00:00 | SA | SARB Interest Rate Decision | | 6.75% | 6.50% |
| | 15:30:00 | US | Personal Consumption Expenditures Prices (QoQ) | | 2.70% | |
| | 16:00:00 | US | Pending Home Sales (YoY) | Feb'18 | -1.70% | |
| | 16:00:00 | US | Pending Home Sales (MoM) | Feb'18 | -4.70% | |
| | 16:30:00 | US | EIA Crude Oil Stocks change | | -2.622M | |
| | 17:00:00 | US | Wholesale Inventories | | 0.80% | |
| | 18:00:00 | US | FOMC Member Bostic speech | | 2.02% | |
| | 19:00:00 | US | 7-Year Note Auction | | 2.84% | |
| | 01:50:00 | Japan | Foreign investment in Japan stocks | | -1153.2B | |
| | 01:50:00 | Japan | Foreign bond investment | | 853.8B | |
| | 01:50:00 | Japan | Retail Trade s.a (MoM) | | -1.80% | |
| | 29-Mar-18 | 08:00:00 | UK | Nationwide Housing Prices s.a (MoM) | | -0.30% |
| 08:00:00 | | UK | Nationwide Housing Prices n.s.a (YoY) | | 2.20% | |
| 08:00:00 | | SA | Private Sector Credit | Feb'18 | 5.54% | |
| 08:00:00 | | SA | M3 Money Supply (YoY) | Feb'18 | 5.83% | |
| 10:00:00 | | Germany | Unemployment Change | Feb'18 | -22K | -15K |
| 10:00:00 | | Germany | Unemployment Rate s.a. | Feb'18 | 5.40% | 5.30% |
| 10:30:00 | | UK | Gross Domestic Product (YoY) | Q4 (Re) | 1.40% | |
| 10:30:00 | | UK | Gross Domestic Product (QoQ) | Q4 (Re) | 0.40% | |
| 10:30:00 | | UK | Total Business Investment (YoY) | Q4 (Re) | 2.10% | |
| 10:30:00 | | UK | Consumer Credit | Feb'18 | 1.357B | |
| 10:30:00 | | UK | Mortgage Approvals | Feb'18 | 67.478K | |
| 10:30:00 | | UK | M4 Money Supply (YoY) | Feb'18 | 4.30% | |
| 11:30:00 | | SA | Producer Price Index (YoY) | Feb'18 | 5.10% | |
| 11:30:00 | | SA | Producer Price Index (MoM) | Feb'18 | 0.30% | |
| 11:30:00 | | UK | Net Lending to Individuals (MoM) | | 4.7B | |
| 14:00:00 | | Germany | Consumer Price Index (YoY) | | 1.40% | 1.60% |
| 14:00:00 | | Germany | Consumer Price Index (MoM) | | 0.50% | 0.40% |
| 14:00:00 | | SA | Trade Balance (in Rands) | Feb'18 | -27.7B | |
| 14:30:00 | | US | Personal Consumption Expenditures - Price Index | Feb'18 | 0.40% | |
| 14:30:00 | | US | Personal Income (MoM) | Feb'18 | 0.40% | 0.40% |
| 14:30:00 | US | Core Personal Consumption Expenditure - Price Index | Feb'18 | 0.30% | 0.20% | |
| 14:30:00 | US | Personal Consumption Expenditures - Price Index | Feb'18 | 1.70% | | |
| 14:30:00 | US | Personal Spending | Feb'18 | 0.20% | | |
| 14:30:00 | US | Initial Jobless Claims | | 229K | | |
| 14:30:00 | US | Continuing Jobless Claims | | 1.828M | | |
| 15:45:00 | US | Chicago Purchasing Managers' Index | | 61.9 | 62.3 | |
| 16:00:00 | US | Michigan Consumer Sentiment Index | | 102 | 102 | |
| 16:30:00 | US | EIA Natural Gas Storage change | | -86B | | |
| 19:00:00 | US | FOMC Member Harker Speech | | | | |
| 01:30:00 | Japan | Tokyo Consumer Price Index (YoY) | | 1.40% | | |
| 01:30:00 | Japan | Jobs/applicants ratio | | 1.59 | | |
| 01:30:00 | Japan | Unemployment Rate | | 2.40% | | |
| 30-Mar-18 | 02:00:00 | Germany | Good Friday | | | |
| | 02:00:00 | SA | Good Friday | | | |
| | 02:00:00 | UK | Good Friday | | | |
| | 02:01:00 | UK | Gfk Consumer Confidence | | -10 | |
| | 03:00:00 | China | NBS Manufacturing PMI | | 50.3 | |
| | 03:00:00 | China | Non-manufacturing PMI | | 54.4 | |
| | 07:00:00 | Japan | Housing Starts (YoY) | | -13.20% | |
| 07:00:00 | Japan | Construction Orders (YoY) | | 0.90% | | |
| 07:00:00 | Japan | Annualized Housing Starts | | 0.856M | | |
| 19:00:00 | US | Baker Hughes US Oil Rig Count | | | | |

Major Central Banks Rate Decisions

| Central Bank | Next Meeting | Last Change | Current Interest Rate |
|-----------------------|--------------|-------------|-----------------------|
| European Central Bank | 26-Apr-18 | 10-Mar-16 | 0.00% |
| Bank of Japan | 27-Apr-18 | 29-Jan-16 | -0.10% |
| Bank of England | 10-May-18 | 02-Nov-17 | 0.50% |
| Federal Reserve | 02-May-18 | 21-Mar-18 | 1.75% |
| SARB | 28-Mar-18 | 20-Jul-17 | 6.75% |