

SA MONEY MARKET REPORT

27 March 2020

THE PREVIOUS WEEK IN REVIEW

1. MONEY MARKET INTEREST RATES

SPOT RATES	13-Mar	20-Mar	27-Mar	Change
Repo Rate	6.25%	5.25%	5.25%	0.00%
Treasury Bill 91 days(D)	6.43%	5.76%	5.60%	-0.16%
Treasury Bill 91 days(Y)	6.54%	5.84%	5.68%	-0.16%
Treasury Bill 182days(D)	6.52%	6.02%	5.96%	-0.06%
Treasury Bill 182days(Y)	6.74%	6.20%	6.14%	-0.06%
Treasury Bill 273days(D)	6.41%	5.94%	5.85%	-0.09%
Treasury Bill 273days(Y)	6.73%	6.21%	6.11%	-0.10%
Treasury Bill 364days(Y)	6.69%	6.28%	6.25%	-0.03%
3 Month NCD	6.35%	5.53%	5.48%	-0.05%
6 Month NCD	6.68%	5.93%	5.93%	0.00%
9 Month NCD	6.78%	6.05%	6.03%	-0.02%
12 Month NCD	6.85%	6.25%	6.23%	-0.03%
18 Month NCD (YTM)	6.77%	6.32%	6.18%	-0.14%
24 Month NCD (YTM)	6.89%	6.45%	6.42%	-0.04%
36 Month NCD (YTM)	7.21%	7.16%	6.94%	-0.22%
R208 (YTM)	5.98%	6.00%	5.83%	-0.170%

MONEY MARKET RATES (NACQ)	13-Mar	20-Mar	27-Mar	Change
3 Month NCD	6.35%	5.53%	5.48%	-0.05%
6 Month NCD	6.51%	5.80%	5.80%	0.00%
9 Month NCD	6.61%	5.92%	5.89%	-0.02%
12 Month NCD	6.68%	6.11%	6.08%	-0.02%
18 Month NCD	6.60%	6.18%	6.04%	-0.13%
24 Month NCD	6.72%	6.30%	6.27%	-0.03%
36 Month NCD	7.02%	6.97%	6.76%	-0.21%
R 208	5.98%	6.00%	5.83%	-0.170%

MONEY MARKET LIQUIDITY	13-Mar	20-Mar	27-Mar	Change
Shortage (Rm)	56000	56000	56000	0
Notes (Rm)	141762	137120	114640	-22480
Reverse Repo (Rm)	0	0	0	0
Debentures (Rm)	7	0	0	0
Liquidity Requirements (Rm)	56854	54912	52787	-2125

2. JIBAR RATES (Nominal Terms)

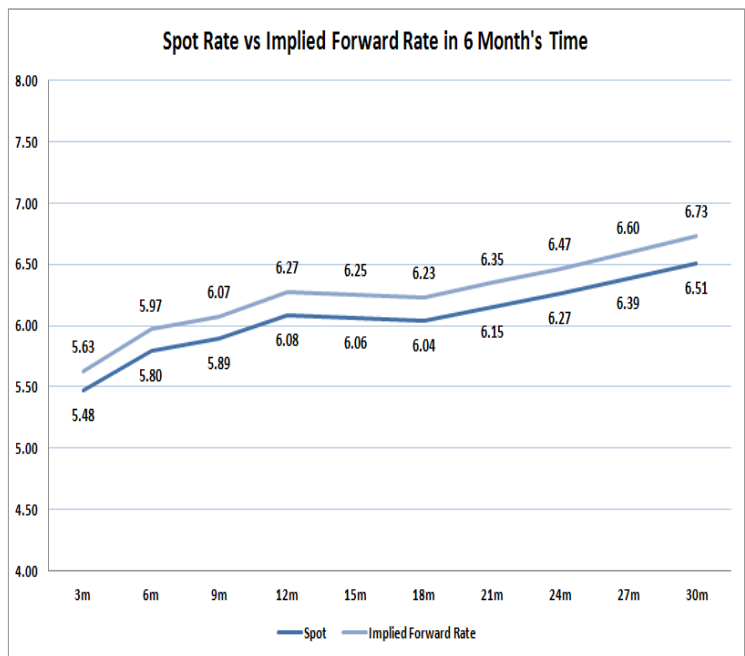
JIBAR (Nominal Terms)	13-Mar	20-Mar	27-Mar	Change
1 Month	6.27%	6.23%	5.53%	-0.71%
3 Month	6.41%	6.34%	5.66%	-0.68%
6 Month	6.75%	6.58%	6.06%	-0.53%
9 Month	6.83%	6.64%	6.13%	-0.51%
12 Month	6.96%	6.78%	6.33%	-0.45%

3. CURRENT AND FUTURE YIELD CURVES (NACQ)

In the graph below the implied forward rates in six months' time are plotted opposite the current spot rates for the corresponding number of months. The implied forward rates are derived from a break-even calculation approach.

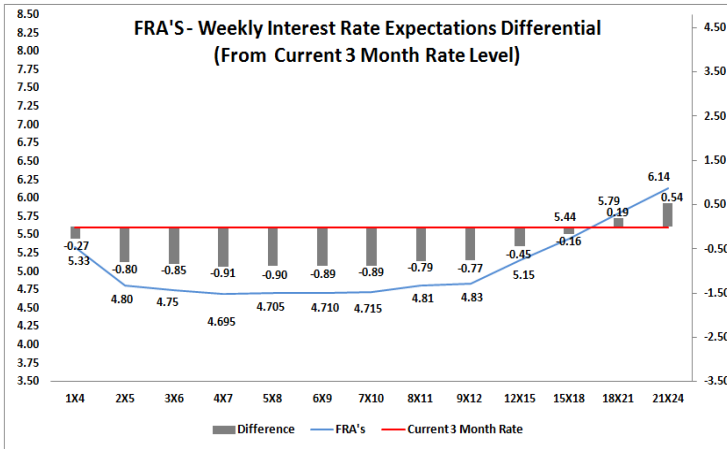
The rates represented in the line graphs below are in NACQ terms.

According to the break-even (forward/forward) calculation, the 12 and 18-month interest rates will be 6.27% and 6.23% respectively in six months time.



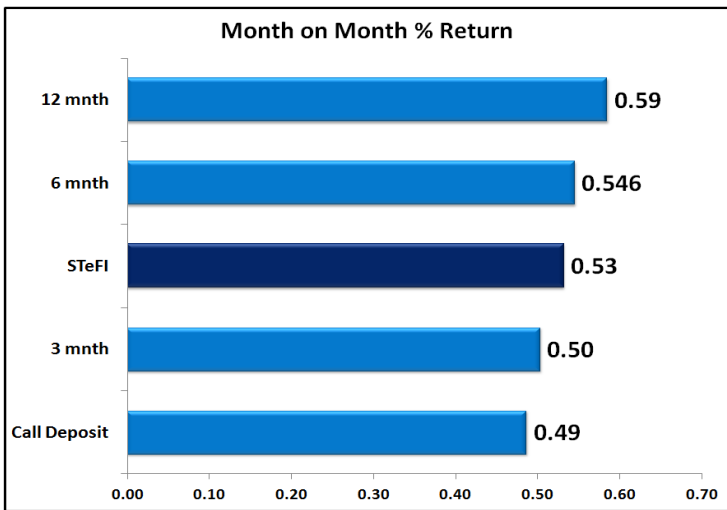
4. FRA RATES (NACQ)

FRA's	13-Mar	20-Mar	27-Mar	Change
1x4	6.15%	5.49%	5.33%	-0.16%
3x6	6.00%	5.28%	4.75%	-0.53%
6x9	5.92%	5.23%	4.71%	-0.52%
9x12	5.92%	5.36%	4.83%	-0.52%
12x15	6.03%	5.57%	5.15%	-0.42%
15x18	6.17%	5.85%	5.44%	-0.41%
18x21	6.28%	6.15%	5.79%	-0.36%
21x24	6.39%	6.44%	6.14%	-0.31%
24x27	6.50%	6.74%	6.48%	-0.25%
27x30	6.61%	7.03%	6.83%	-0.20%

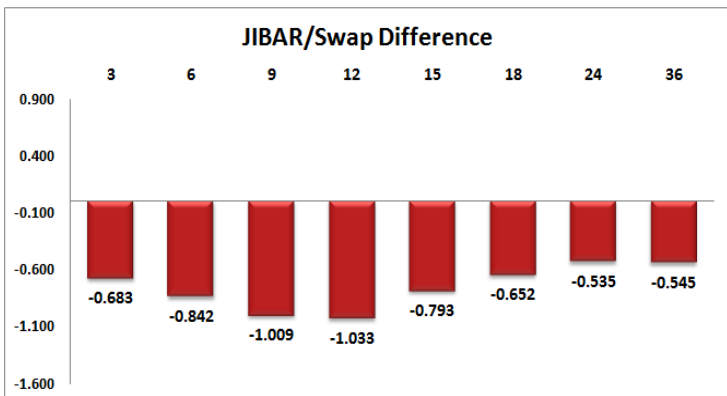
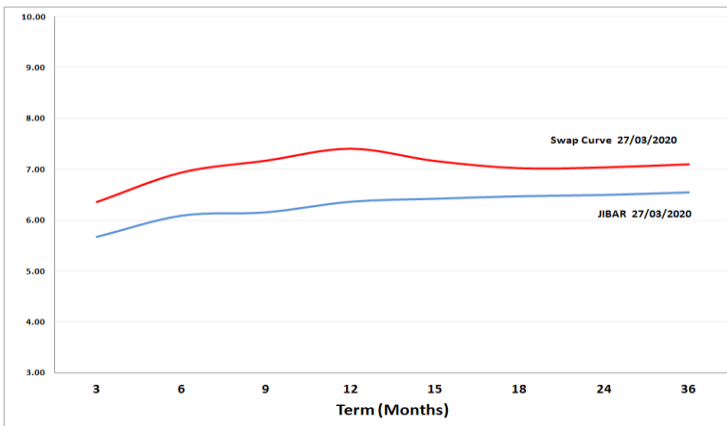


5. MONEY MARKET PERFORMANCE

STeFI (Month on Month) gained 0.53% with the best return 0.59% in the 12-Month area.



6. JIBAR and SWAPS - Curve



7. SARB AND NATIONAL TREASURY OPERATIONS

SARB DEBENTURES			
	Received	Allotted	Av. Rate
7 Days	0	0	0.000%
14 Days	0	0	0.000%
28 Days	0	0	0.000%
56 Days	0	0	0.000%
LONG TERM REVERSE REPO			
14Days			
	Allotted	Av. Rate	
56 Days			
	Allotted	Av. Rate	
TREASURY BILLS			
	Received	Allotted	Av. Rate
91 Days	R1248m	R1033m	5.68%
182 Days	R2286m	R2286m	6.14%
273 Days	R5692m	R3510m	6.11%

8. THE WEEK AHEAD

Date	Time	Country	Event	Month	Previous	Consensus	Forecast
30-Mar-20	08:00:00	SA	Private Sector Credit YoY	Feb'20		4.63%	4.40%
	08:00:00	SA	M3 Money Supply YoY	Feb'20	7.02%	8.22%	
	10:30:00	UK	BoE Consumer Credit	Feb'20	£1.23B		
	10:30:00	UK	Mortgage Approvals	Feb'20	70.89K	68.455K	67.5K
	10:30:00	UK	Mortgage Lending	Feb'20			£3.2B
	10:30:00	UK	Net Lending to Individuals MoM	Feb'20	£5.2B		£4.2B
	11:00:00	EU	Business Confidence MAR		-0.4	-0.05	-0.6
	11:00:00	EU	Consumer Confidence Final MAR		-6.6	-11.6	-11.6
	11:00:00	EU	Economic Sentiment MAR		103.5	104.1	95
	11:00:00	EU	Industrial Sentiment MAR		-6.1	-5.5	-13
	11:00:00	EU	Services Sentiment MAR		11.2	10.6	2
	11:00:00	EU	Consumer Inflation Expectations MAR		21.1		19
	14:00:00	Germany	Inflation YoY Prel MAR		1.70%	1.40%	1.40%
	14:00:00	Germany	Inflation Rate MoM Prel MAR		0.40%	0.10%	0.10%
	14:00:00	SA	Balance of Trade		ZAR-1.87B		ZAR -5B
	16:00:00	US	Pending Home Sales YoY	Feb'20	5.70%	1.70%	
	16:00:00	US	Pending Home Sales MoM	Feb'20	5.20%	-0.30%	
	16:30:00	US	Dallas Fed Manufacturing Index MAR		1.2	6.2	-6
	17:30:00	US	6-Month Bill Auction		0.08%		
	17:30:00	US	3-Month Bill Auction		0.00%		
31-Mar-20	01:01:00	UK	Gfk Consumer Confidence MAR		-7	-12	-13
	01:30:00	Japan	Unemployment Rate	Feb'20	2.40%	2.40%	2.40%
	01:30:00	Japan	Jobs/applications ratio	Feb'20	1.49	1.47	1.47
	01:50:00	Japan	Retail Sales YoY	Feb'20	-0.40%	-1.20%	-2.00%
	01:50:00	Japan	Industrial Production MoM Prel	Feb'20	1.00%		-1.20%
	01:50:00	Japan	Industrial Production YoY Prel	Feb'20	-2.30%		-3.20%
	07:00:00	Japan	Housing Starts YoY	Feb'20	-10.10%	-14.70%	-3.30%
	07:00:00	Japan	Construction Orders YoY	Feb'20	17.00%		1.50%
	08:00:00	Germany	Unemployment Rate Harmonised	Feb'20	3.20%		3.20%
	08:00:00	Germany	Import Prices YoY	Feb'20	-0.90%	-1.60%	
	08:00:00	UK	GDP Growth Rate QoQ Final	Q4	0.50%	0.00%	0.00%
	08:00:00	UK	GDP Growth Rate YoY Final	Q4	1.20%	1.10%	1.10%
	08:00:00	UK	Current Account	Q4	£-15.86B		£-24.6B
	09:55:00	Germany	Unemployment Rate MAR		5.00%	5.10%	5.00%
	11:00:00	EU	Inflation Rate YoY Flash MAR		1.20%	0.70%	0.70%
	11:00:00	EU	Inflation Rate MoM Flash MAR		0.20%		0.50%
	14:55:00	US	Redbook MoM 28/MAR		1.70%		
	14:55:00	US	Redbook YoY 28/MAR		9.10%		
	22:30:00	US	API Crude Oil Stock Change 27/MAR				
01-Apr-20	08:00:00	Germany	Retail Sales MoM	Feb'20	0.90%	1.00%	0.50%
	08:00:00	Germany	Retail Sales YoY	Feb'20	1.80%	1.50%	1.20%
	11:00:00	EU	Unemployment Rate	Feb'20	7.40%	7.40%	7.40%
	11:00:00	SA	ABSA Manufacturing PMI MAR		44.3		42.6
	11:40:00	Germany	5-Year Bobl Auction		-0.69%		
	14:00:00	SA	Total New Vehicle Sales MAR		43.485K		46K
	14:15:00	US	ADP Employment Change MAR		183K	216K	-90K
	15:45:00	US	Markit Manufacturing PMI Final MAR		50.7	49.2	49.2
	16:00:00	US	Construction Spending MoM	Feb'20	1.80%	0.20%	
		EU	ECB Non-Monetary Policy Meeting				
02-Apr-20	01:50:00	Japan	Foreign Bond Investment 28/MAR				
	01:50:00	Japan	Stock Investment by Foreigners 28/MAR				
	05:45:00	Japan	10-Year JGB Auction		-0.10%		
	10:30:00	UK	Construction PMI MAR		52.6		46
	11:00:00	EU	PPI MoM	Feb'20	0.40%	0.20%	
	11:00:00	EU	PPI YoY	Feb'20	-0.50%	0.30%	
	13:30:00	US	Challenger Job Cuts MAR		56.66K		105K
	14:30:00	US	Balance of Trade	Feb'20	\$-45.3B	\$-46.1B	
	14:30:00	US	Initial Jobless Claims 28/MAR		3283K		
	14:30:00	US	Exports	Feb'20	\$208.6B		
	14:30:00	US	Imports	Feb'20	\$253.9B		
	14:30:00	US	Continuing Jobless Claims 21/MAR			0.70%	
	16:00:00	US	Factory Orders MoM	Feb'20			
	16:00:00	US	Factory Orders ex Transportation	Feb'20	-0.10%		
	16:30:00	US	EIA Natural Gas Stocks Change 27/MAR		-29Bcf		
	17:30:00	US	4-Week Bill Auction		0.00%		
	17:30:00	US	8-Week Bill Auction		0.00%		
03-Apr-20	09:15:00	SA	Standard Bank PMI MAR		48.4		47.1
	11:00:00	EU	Retail Sales MoM	Feb'20	0.60%	0.60%	0.70%
	11:00:00	EU	Retail Sales YoY	Feb'20	1.70%	1.10%	1.10%
	14:30:00	US	Non Farm Payrolls MAR		273K	-293K	-100K
	14:30:00	US	Unemployment Rate MAR		3.50%	4.00%	4.00%
	14:30:00	US	Manufacturing Payrolls MAR		15K		-20K
	14:30:00	US	Participation Rate MAR		63.40%	63.30%	63.30%
	14:30:00	US	Nonfarm Payrolls Private MAR		228K	-420K	-90K
	14:30:00	US	Average Weekly Hours MAR		34.4	34.1	34.5
	14:30:00	US	Average Hourly Earnings YoY MAR		3.00%	3.00%	
	14:30:00	US	Government Payrolls MAR		45K		-10K
	14:30:00	US	Average Hourly Earnings MoM MAR		0.30%		0.20%
	15:45:00	US	Markit Composite PMI Final MAR		49.6	40.5	40.5
	15:45:00	US	Markit Services PMI Final MAR		49.4	39.1	39.1

Major Central Banks Rate Decisions			
Central Bank	Next Meeting	Last Change	Current Interest Rate
European Central Bank	30-Apr-20	10-Mar-16	0.00%
Bank of Japan	28-Apr-20	29-Jan-16	-0.10%
Bank of England	07-May-20	19-Mar-20	0.10%
Federal Reserve	29-Apr-20	15-Mar-20	1.25%
SARB	21-May-20	19-Mar-20	5.25%