

SA MONEY MARKET REPORT

29 January 2018

THE PREVIOUS WEEK IN REVIEW

1. MONEY MARKET INTEREST RATES

SPOT RATES	12-Jan	19-Jan	29-Jan	Change
Repo Rate	6.75%	6.75%	6.75%	0.00%
Treasury Bill 91 days(D)	7.27%	7.24%	7.21%	-0.03%
Treasury Bill 91 days(Y)	7.40%	7.37%	7.34%	-0.03%
Treasury Bill 182days(D)	7.29%	7.31%	7.28%	-0.03%
Treasury Bill 182days(Y)	7.56%	7.59%	7.55%	-0.04%
Treasury Bill 273days(D)	7.28%	7.24%	7.18%	-0.06%
Treasury Bill 273days(Y)	7.70%	7.66%	7.59%	-0.07%
Treasury Bill 364days(Y)	7.68%	7.65%	7.62%	-0.03%
3 Month NCD	7.10%	7.05%	7.03%	-0.02%
6 Month NCD	7.53%	7.50%	7.48%	-0.03%
9 Month NCD	7.68%	7.65%	7.58%	-0.08%
12 Month NCD	7.90%	7.88%	7.85%	-0.03%
18 Month NCD (YTM)	7.77%	7.73%	7.73%	0.00%
24 Month NCD (YTM)	7.82%	7.78%	7.78%	0.00%
36 Month NCD (YTM)	8.14%	8.05%	8.13%	0.08%
R204 (YTM)	7.13%	7.04%	6.99%	-0.055%

MONEY MARKET RATES (NACQ)	12-Jan	19-Jan	29-Jan	Change
3 Month NCD	6.98%	6.98%	6.98%	0.00%
6 Month NCD	7.32%	7.30%	7.27%	-0.02%
9 Month NCD	7.46%	7.44%	7.37%	-0.07%
12 Month NCD	7.68%	7.65%	7.63%	-0.02%
18 Month NCD	7.55%	7.52%	7.52%	0.00%
24 Month NCD	7.60%	7.56%	7.56%	0.00%
36 Month NCD	7.90%	7.82%	7.89%	0.07%
R 204	7.13%	7.04%	6.99%	-0.055%

MONEY MARKET LIQUIDITY	12-Jan	19-Jan	29-Jan	Change
Shortage (Rm)	56000	56000	56000	0
Notes (Rm)	133102	127293	131520	4227
Reverse Repo (Rm)	0	0	0	0
Debentures (Rm)	50	54	100	46
Liquidity Requirements (Rm)	55401	56868	58182	1314

2. JIBAR RATES (Nominal Terms)

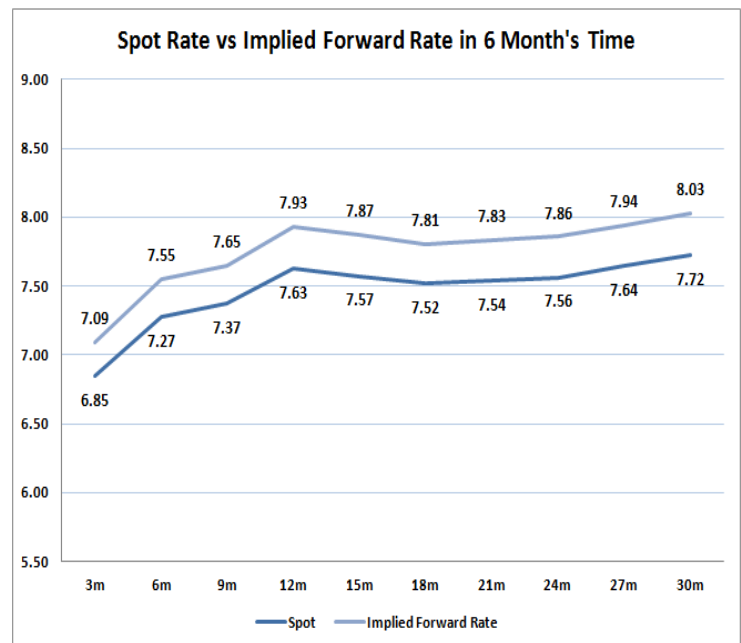
JIBAR (Nominal Terms)	12-Jan	19-Jan	29-Jan	Change
1 Month	6.91%	6.92%	6.90%	-0.02%
3 Month	7.16%	7.15%	7.13%	-0.02%
6 Month	7.60%	7.57%	7.57%	0.00%
9 Month	7.74%	7.66%	7.66%	0.00%
12 Month	7.98%	7.91%	7.89%	-0.02%

3. CURRENT AND FUTURE YIELD CURVES (NACQ)

In the graph below the implied forward rates in six months' time are plotted opposite the current spot rates for the corresponding number of months. The implied forward rates are derived from a break-even calculation approach.

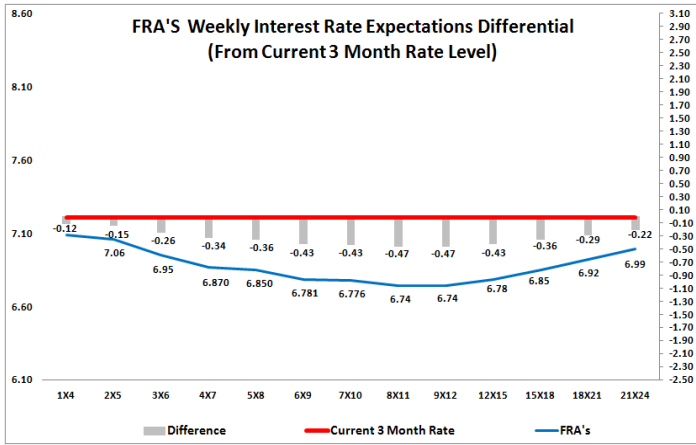
The rates represented in the line graphs below are in NACQ terms.

According to the break-even (forward/forward) calculation, the 12 and 18-month interest rates will be 7.93% and 7.81% respectively in six months time.



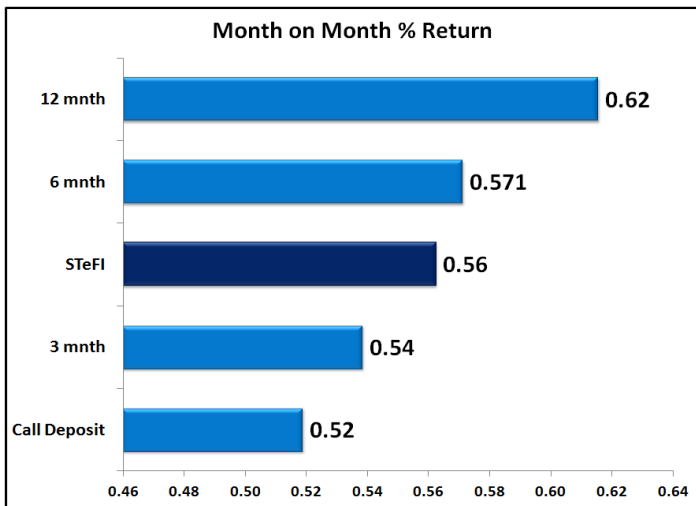
4. FRA RATES (NACQ)

FRA's	12-Jan	19-Jan	29-Jan	Change
1x4	7.09%	7.05%	7.09%	0.04%
3x6	6.99%	6.92%	6.95%	0.03%
6x9	6.90%	6.78%	6.78%	0.00%
9x12	6.84%	6.70%	6.74%	0.04%
12x15	6.91%	6.74%	6.78%	0.04%
15x18	6.99%	6.82%	6.85%	0.03%
18x21	7.08%	6.90%	6.92%	0.02%
21x24	7.17%	6.98%	6.99%	0.01%
24x27	7.27%	7.06%	7.06%	0.00%
27x30	7.36%	7.15%	7.13%	-0.02%

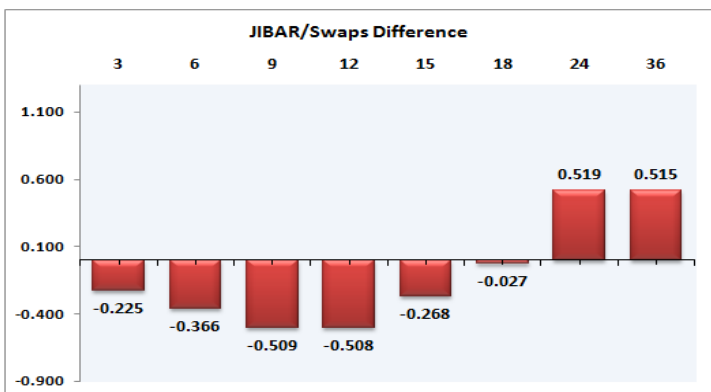
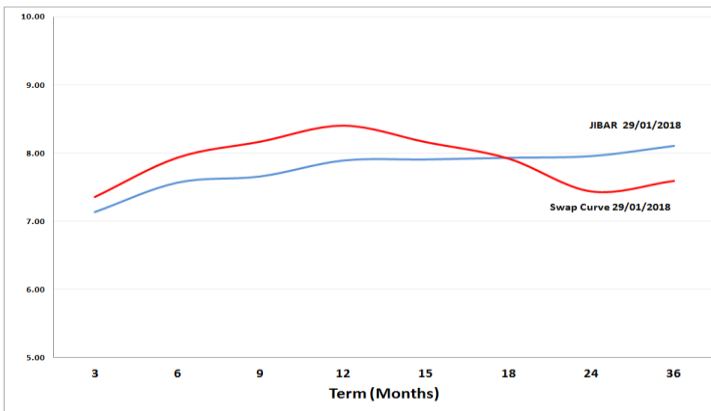


5. MONEY MARKET PERFORMANCE

STeFI (Month on Month) gained 0.56% with the best return 0.62% in the 12-Month area.



6. JIBAR and SWAPS - Curve



7. SARB AND NATIONAL TREASURY OPERATIONS

SARB DEBENTURES			
	Received	Allotted	Av. Rate
7 Days	320	100	6.740%
14 Days	0	0	0.000%
28 Days	0	0	0.000%
56 Days	0	0	0.000%

LONG TERM REVERSE REPO			
14 Days			
	Allotted	Av. Rate	

56 Days			
	Allotted	Av. Rate	

TREASURY BILLS			
	Received	Allotted	Av. Rate
91 Days	R6112m	R1800m	7.34%
182 Days	R6493m	R2000m	7.55%
273 Days	R67923m	R2100m	7.59%

8. THE WEEK AHEAD

Date	Time	Country	Event	Previous	Forecast
29-Jan-18	12:45:00	EU	ECB's Lautenschlager Speech		
	15:30:00	US	Core Personal Consumption Expenditure - Price Index (YoY)	1.50%	1.50%
	15:30:00	US	Personal Consumption Expenditures - Price Index (MoM)	0.20%	0.0%
	15:30:00	US	Personal Spending	0.60%	0.40%
	15:30:00	US	Personal Consumption Expenditures - Price Index (YoY)	1.80%	1.90%
	15:30:00	US	Core Personal Consumption Expenditure - Price Index (MoM)	0.10%	0.20%
	15:30:00	US	Personal Income (MoM)	0.30%	0.30%
	17:30:00	US	Dallas Fed Manufacturing Business Index	29.7	14.6
	18:00:00	EU	ECB Lautenschlager Speech		
	01:30:00	Japan	Jobs/applicants ratio	1.56	1.57
	01:30:00	Japan	Unemployment Rate	2.70%	2.70%
	01:30:00	Japan	Overall Household Spending (YoY)	1.70%	1.70%
	01:50:00	Japan	Large Retailer's Sales	1.40%	-0.60%
	01:50:00	Japan	Retail Trade s.a (MoM)	1.90%	0.10%
	01:50:00	Japan	Retail Trade (YoY)	2.20%	1.80%
30-Jan-18	08:00:00	SA	M3 Money Supply (YoY)	6.61%	6.50%
	08:00:00	SA	Private Sector Credit	6.45%	6.05%
	11:30:00	UK	Net Lending to Individuals (MoM)	4.9B	4.8B
	11:30:00	UK	Consumer Credit	1.4B	1.3B
	11:30:00	UK	Mortgage Approvals	65.139K	63.5K
	11:30:00	UK	M4 Money Supply (YoY)	3.70%	
	12:00:00	EU	Gross Domestic Product s.a. (QoQ)	0.60%	0.60%
	12:00:00	EU	Gross Domestic Product s.a. (YoY)	2.60%	2.60%
	12:00:00	EU	Economic Sentiment Indicator	116	116.3
	12:00:00	EU	Business Climate	1.66	1.7
	15:00:00	Germany	Harmonised Index of Consumer Prices (YoY)	1.60%	1.60%
	15:00:00	Germany	Consumer Price Index (MoM)	0.60%	-0.60%
	15:00:00	Germany	Consumer Price Index (YoY)	1.70%	1.70%
	15:00:00	Germany	Harmonised Index of Consumer Prices (MoM)	0.80%	-0.70%
	15:55:00	US	Redbook index (YoY)	3.80%	
	16:00:00	US	S&P/Case-Shiller Home Price Indices (YoY)	6.40%	6.40%
	17:30:00	UK	BOE's Governor Carney speech		
	18:30:00	EU	ECB's Mersch speech		
	23:30:00	US	API Weekly Crude Oil Stock	4.755M	
	01:30:00	Japan	Industrial Production (MoM)	0.50%	1.60%
	01:50:00	Japan	BOJ Summary of Opinions		
	01:50:00	Japan	Industrial Production (YoY)	3.60%	1.90%
31-Jan-18	02:01:00	UK	Gfk Consumer Confidence	-13	
	02:01:00	UK	BRC Shop Price Index (YoY)	-0.60%	
	02:01:00	UK	BRC Shop Price Index (YoY)		
	03:00:00	China	Non-manufacturing PMI	55	
	03:00:00	China	NBS Manufacturing PMI	51.6	
	04:00:00	US	President Trump Speech		
	07:00:00	Japan	Construction Orders (YoY)	20.50%	
	07:00:00	Japan	Housing Starts (YoY)	-0.40%	1.10%
	07:00:00	Japan	Annualized Housing Starts	0.951M	
	07:00:00	Japan	Consumer Confidence Index	44.7	
	09:00:00	Germany	Retail Sales (YoY)	4.40%	
	09:00:00	Germany	Retail Sales (MoM)	0.70%	-0.40%
	11:00:00	Germany	Unemployment Change	-29K	-15K
	11:00:00	Germany	Unemployment Rate s.a.	5.50%	5.40%
	12:00:00	EU	Unemployment Rate	8.70%	8.70%
	12:00:00	EU	Consumer Price Index (YoY)	1.40%	1.30%
	12:00:00	EU	Consumer Price Index - Core (YoY)	1.10%	1%
	14:00:00	US	MBA Mortgage Applications	4.50%	
	14:00:00	SA	Trade Balance	13.02B	10.05B
	15:15:00	US	ADP Employment Change	250K	180K
	15:30:00	US	Employment cost index	67.6	64.5
	16:45:00	US	Chicago Purchasing Managers' Index	60.60%	
	17:00:00	US	Pending Home Sales (YoY)	0.20%	0.30%
	17:00:00	US	Pending Home Sales (MoM)	0.20%	0.30%
	17:30:00	US	EIA Crude Oil Stocks change	-1.071M	-1.998M
	21:00:00	US	Fed's Monetary Policy Statement		
	21:00:00	US	Fed Interest Rate Decision	1.50%	1.50%
	01:50:00	Japan	Foreign bond investment	411.1B	
	01:50:00	Japan	Foreign investment in Japan stocks	-148.2B	
01-Feb-18	02:30:00	Japan	Nikkei Manufacturing PMI	54.4	
	04:45:00	China	Caixin Manufacturing PMI	51.7	
	09:00:00	UK	Nationwide Housing Prices s.a (MoM)	0.60%	
	09:00:00	UK	Nationwide Housing Prices n.s.a (YoY)	2.60%	
	14:30:00	US	Challenger Job Cuts (YoY)	32.423K	
	15:00:00	SA	Total New Vehicle Sales	40.636	40.75
	15:00:00	SA	Total New Vehicle (YoY)	-2.40%	
	15:30:00	US	Continuing Jobless Claims	1.937M	1.916M
	15:30:00	US	Initial Jobless Claims	233K	245K
	15:30:00	US	Unit Labor Costs	-0.20%	0.80%
	15:30:00	US	Nonfarm Productivity	3%	1.30%
	16:45:00	US	Markit Manufacturing PMI	55.5	54.9
	17:00:00	US	Construction Spending (MoM)	0.80%	0.40%
	17:30:00	US	EIA Natural Gas Storage change	-288B	-300B
	22:30:00	US	Total Vehicle Sales	17.9M	
	01:50:00	Japan	Monetary Base (YoY)	11.20%	11.40%
02-Feb-18	11:30:00	UK	PMI Construction	52.2	52.6
	12:00:00	EU	Producer Price Index (YoY)	2.80%	3.20%
	12:00:00	EU	Producer Price Index (MoM)	0.60%	0.10%
	15:30:00	US	Average Weekly Hours	34.5	34.5
	15:30:00	US	Average Hourly Earnings (YoY)	2.50%	2.60%
	15:30:00	US	Nonfarm Payrolls	148K	175K
	15:30:00	US	Unemployment Rate	4.10%	4.10%
	15:30:00	US	Labor Force Participation Rate	62.70%	62.80%
	15:30:00	US	Average Hourly Earnings (MoM)	0.30%	0.30%
	16:45:00	US	TSM NY index - Business Conditions	56.3	
	17:00:00	US	Michigan Consumer Sentiment Index	94.4	95
	17:00:00	US	Factory Orders (MoM)	1.30%	0.60%
	20:00:00	US	Baker Hughes US Oil Rig Count	759	

Major Central Banks Rate Decisions			
Central Bank	Next Meeting	Last Change	Current Interest Rate
European Central Bank	08-Mar-18	10-Mar-16	0.00%
Bank of Japan	09-Mar-18	29-Jan-16	-0.10%
Bank of England	08-Feb-18	02-Nov-17	0.50%
Federal Reserve	31-Jan-18	13-Dec-17	1.50%
SARB	28-Mar-18	20-Jul-17	6.75%