

SA MONEY MARKET REPORT

29 September 2017

THE PREVIOUS WEEK IN REVIEW

1. MONEY MARKET INTEREST RATES

SPOT RATES	15-Sep	22-Sep	29-Sep	Change
Repo Rate	6.75%	6.75%	6.75%	0.00%
Treasury Bill 91 days(D)	7.07%	7.07%	7.11%	0.04%
Treasury Bill 91 days(Y)	7.20%	7.20%	7.24%	0.04%
Treasury Bill 182days(D)	6.95%	7.08%	7.18%	0.10%
Treasury Bill 182days(Y)	7.20%	7.34%	7.44%	0.10%
Treasury Bill 273days(D)	6.85%	6.98%	7.01%	0.03%
Treasury Bill 273days(Y)	7.22%	7.37%	7.40%	0.03%
Treasury Bill 364days(Y)	7.18%	7.32%	7.36%	0.04%
3 Month NCD	7.03%	7.00%	7.03%	0.03%
6 Month NCD	7.40%	7.40%	7.40%	0.00%
9 Month NCD	7.50%	7.43%	7.50%	0.08%
12 Month NCD	7.68%	7.60%	7.68%	0.08%
18 Month NCD (YTM)	7.42%	7.46%	7.62%	0.17%
24 Month NCD (YTM)	7.46%	7.52%	7.68%	0.16%
36 Month NCD (YTM)	7.72%	7.80%	7.96%	0.16%
R204 (YTM)	6.85%	6.90%	7.015%	0.115%

MONEY MARKET RATES (NACQ)	15-Sep	22-Sep	29-Sep	Change
3 Month NCD	7.03%	7.03%	7.03%	0.00%
6 Month NCD	7.08%	7.08%	7.16%	0.07%
9 Month NCD	7.20%	7.20%	7.32%	0.12%
12 Month NCD	7.35%	7.35%	7.51%	0.17%
18 Month NCD	7.22%	7.22%	7.41%	0.19%
24 Month NCD	7.26%	7.26%	7.47%	0.21%
36 Month NCD	7.50%	7.50%	7.73%	0.23%
R 204	6.85%	6.90%	7.02%	0.115%

MONEY MARKET LIQUIDITY	15-Sep	22-Sep	29-Sep	Change
Shortage (Rm)	56000	56000	56000	0
Notes (Rm)	125387	130764	136741	5977
Reverse Repo (Rm)	0	0	0	0
Debentures (Rm)	176	266	267	1
Liquidity Requirements (Rm)	56147	57356	55273	-2083

2. JIBAR RATES (Nominal Terms)

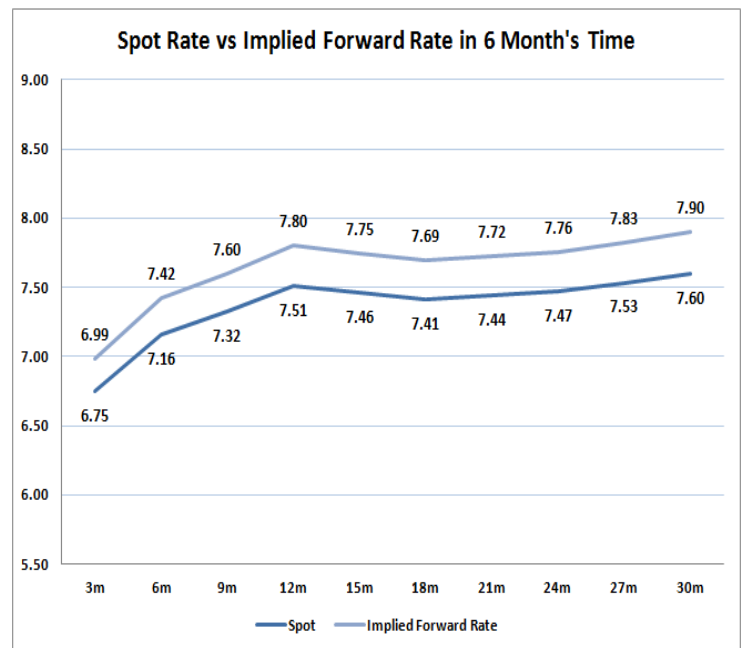
JIBAR (Nominal Terms)	15-Sep	22-Sep	29-Sep	Change
1 Month	6.82%	6.80%	6.80%	0.00%
3 Month	7.04%	6.99%	6.99%	0.00%
6 Month	7.33%	7.29%	7.41%	0.12%
9 Month	7.46%	7.55%	7.60%	0.05%
12 Month	7.63%	7.73%	7.80%	0.07%

3. CURRENT AND FUTURE YIELD CURVES (NACQ)

In the graph below the implied forward rates in six months' time are plotted opposite the current spot rates for the corresponding number of months. The implied forward rates are derived from a break-even calculation approach.

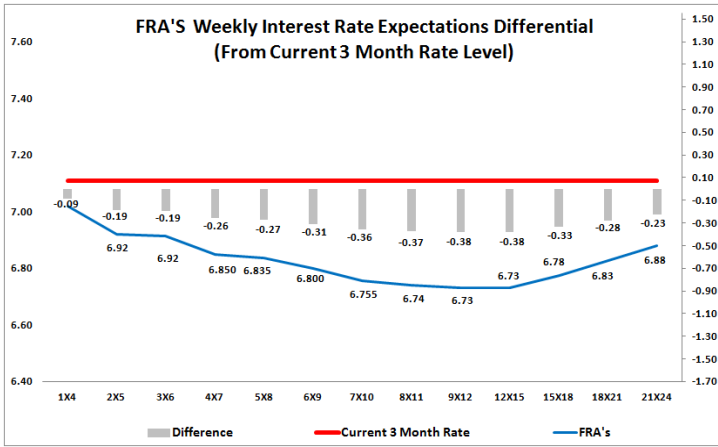
The rates represented in the line graphs below are in NACQ terms.

According to the break-even (forward/forward) calculation, the 12 and 18-month interest rates will be 7.80% and 7.69% respectively in six months time.



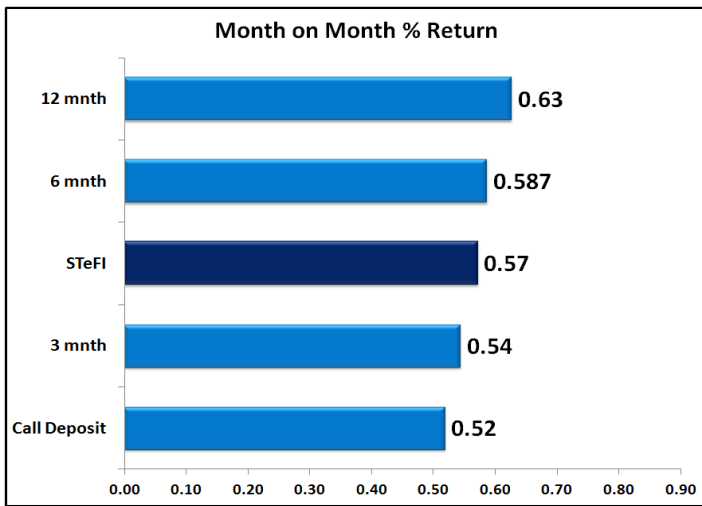
4. FRA RATES (NACQ)

FRA's	15-Sep	22-Sep	29-Sep	Change
1x4	6.83%	7.01%	7.02%	0.01%
3x6	6.70%	6.88%	6.92%	0.04%
6x9	6.60%	6.76%	6.80%	0.05%
9x12	6.47%	6.67%	6.73%	0.06%
12x15	6.46%	6.67%	6.73%	0.06%
15x18	6.52%	6.70%	6.78%	0.08%
18x21	6.57%	6.75%	6.83%	0.08%
21x24	6.62%	6.80%	6.88%	0.09%
24x27	6.67%	6.85%	6.93%	0.09%
27x30	6.72%	6.90%	6.99%	0.09%

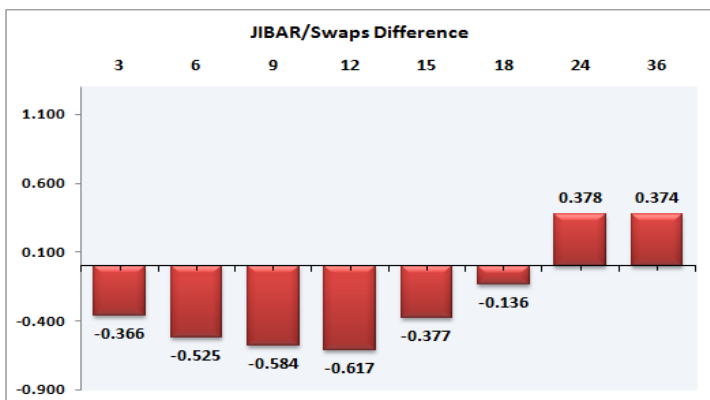
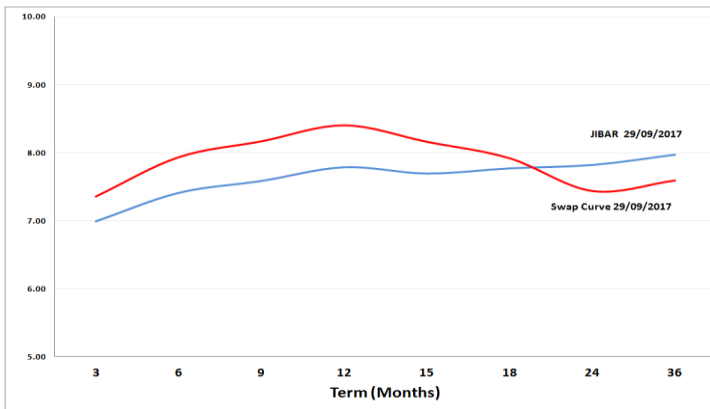


5. MONEY MARKET PERFORMANCE

STeFI (Month on Month) gained 0.57% with the best return 0.63% in the 12-Month area.



6. JIBAR and SWAPS - Curve



7. SARB AND NATIONAL TREASURY OPERATIONS

SARB DEBENTURES			
	Received	Allotted	Av. Rate
7 Days	119	0	0.000%
14 Days	0	0	0.000%
28 Days	215	150	6.700%
56 Days	0	0	0.000%
LONG TERM REVERSE REPO			
14Days			
	Allotted	Av. Rate	
56 Days			
	Allotted	Av. Rate	
TREASURY BILLS			
	Received	Allotted	Av. Rate
91 Days	R6577m	R3555m	7.24%
182 Days	R3390m	R2460m	7.44%
273 Days	R4105m	R2500m	7.40%

8. THE WEEK AHEAD

Date	Time	Country	Event	Previous	Forecast
02-Oct-17	02:00:00	China	National Day		
	02:30:00	Japan	Nikkei Manufacturing PMI	52.6	
	09:55:00	Germany	Markit Manufacturing PMI	60.6	60.6
	10:00:00	EU	Markit Manufacturing PMI	58.2	58.2
	10:30:00	UK	Markit Manufacturing PMI	56.9	
	11:00:00	EU	Unemployment Rate	9.10%	9.10%
	15:00:00	SA	Total New Vehicle Sales	49222	
	15:45:00	US	Markit Manufacturing PMI	53	
	16:00:00	US	ISM Manufacturing PMI	58.8	57.5
	16:00:00	US	ISM Prices Paid	62	63.3
	16:00:00	US	Construction Spending (MoM)	-0.60%	0.20%
	01:50:00	Japan	Monetary Base (YoY)	16.30%	
03-Oct-17	02:00:00	Germany	Day of German Unity		
	02:00:00	China	National Day		
	07:00:00	Japan	Consumer Confidence Index	43.3	
	10:30:00	UK	FPC Statement		
	10:30:00	UK	PMI Construction	51.1	
	12:00:00	EU	Producer Price Index (YoY)	2%	
	12:00:00	EU	Producer Price Index (MoM)	0%	
	14:55:00	US	Redbook index (MoM)	0%	
	14:55:00	US	Redbook index (YoY)	4%	
	15:45:00	US	ISM NY index - Business Conditions	56.6	
	21:30:00	US	Total Vehicle Sales	16.14M	16.3M
	22:30:00	US	API Weekly Crude Oil Stock	-0.761M	
	01:00:00	UK	BRC Shop Price Index (YoY)	-0.30%	
04-Oct-17	02:00:00	China	Mid-Autumn Festival		
	02:00:00	China	National Day		
	09:00:00	EU	Non-monetary policy's ECB meeting		
	09:55:00	Germany	Markit Services PMI	55.6	
	09:55:00	Germany	Markit PMI Composite	57.8	
	10:00:00	EU	Markit Services PMI	55.6	
	10:00:00	EU	Markit PMI Composite	56.7	
	10:30:00	UK	Markit Services PMI	53.2	
	12:00:00	UK	Inflation Report Hearings		
	12:00:00	EU	Retail Sales (YoY)	2.60%	
	12:00:00	EU	Retail Sales (MoM)	-0.30%	
	13:00:00	US	MBA Mortgage Applications	-0.50%	
	14:15:00	US	ADP Employment Change	237K	172K
	15:45:00	US	Markit PMI Composite	54.6	
	15:45:00	US	Markit Services PMI	55.1	
	16:00:00	US	ISM Non-Manufacturing PMI	55.3	54.9
	16:30:00	US	EIA Crude Oil Stocks change	-1.846M	
	01:50:00	Japan	Foreign investment in Japan stocks		
	01:50:00	Japan	Foreign bond investment	233.6B	
05-Oct-17	02:00:00	China	National Day		
	11:00:00	UK	10-y Bond Auction	1.16%	
	13:30:00	US	Challenger Job Cuts (YoY)	33.825K	
	13:30:00	EU	ECB Monetary Policy Meeting Accounts		
	14:30:00	US	Trade Balance	-43.7B	
	14:30:00	US	Continuing Jobless Claims	1.934M	
	14:30:00	US	Initial Jobless Claims	272K	
	16:00:00	US	Factory Orders (MoM)	-3.30%	0.50%
	16:30:00	US	EIA Natural Gas Storage change	58B	
	01:50:00	Japan	JP Foreign Reserves	1268B	
06-Oct-17	02:00:00	Japan	Labor Cash Earnings (YoY)	-0.30%	
	02:00:00	China	National Day		
	08:00:00	SA	Net \$Gold & Forex Reserve	42.646B	
	08:00:00	SA	Gross \$Gold & Forex Reserve	46.921B	
	08:00:00	Germany	Factory Orders s.a. (MoM)	-0.70%	0.70%
	08:00:00	Germany	Factory Orders n.s.a. (YoY)	5%	
	09:30:00	UK	Halifax House Prices (MoM)	1.10%	
	09:30:00	UK	Halifax House Prices (3m/YoY)	2.60%	
	14:30:00	US	Average Hourly Earnings (YoY)	2.50%	2.60%
	14:30:00	US	Nonfarm Payrolls	156K	130K
	14:30:00	US	Unemployment Rate	4.40%	4.40%
	14:30:00	US	Labor Force Participation Rate	62.90%	
	14:30:00	US	Average Hourly Earnings (MoM)	0.10%	
	14:30:00	US	Average Weekly Hours	34.4	34.4
	16:00:00	US	Wholesale Inventories	1%	0.30%
	19:00:00	US	Baker Hughes US Oil Rig Count		
	21:00:00	US	Consumer Credit Change	18.5B	

Major Central Banks Rate Decisions			
Central Bank	Next Meeting	Last Change	Current Interest Rate
European Central Bank	26-Oct-17	10-Mar-16	0.00%
Bank of Japan	31-Oct-17	29-Jan-16	-0.10%
Bank of England	25-Oct-17	04-Aug-16	0.25%
Federal Reserve	01-Nov-17	14-Jun-17	1.25%
SARB	21-Nov-17	20-Jul-17	6.75%