



## Capital Market Report 8 October 2021

Foreigners sold R 2.7B for the week ended. They bought R2030s & R2044s, and sold R2048s, R2032s, R2035s & R213s. CLN706s and CLN703s were the weakest performers this week giving away 112.5 and 75pps over their benchmarks, whilst MTN07s was the best performer, gaining 7bps over JIBAR.

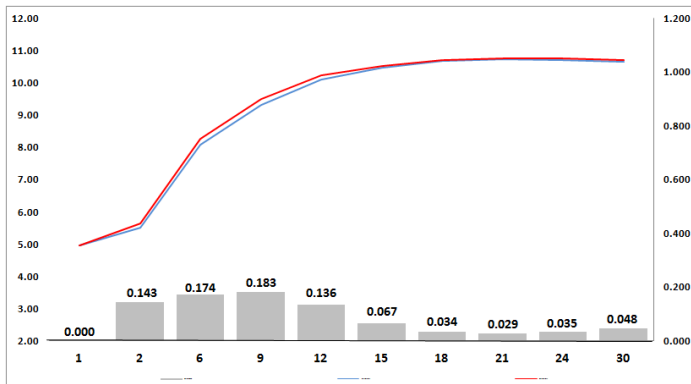
### WEEKLY NON RES STATS

BOND	PURCHASES	SALES	NETT
R 2 023	R 722 185 000	R 340 872 700	R 381 312 300
R 186	R 6 557 140 000	R 6 307 982 900	R 249 157 100
R 2 030	R 3 615 700 000	R 2 389 860 000	R 1 225 840 000
R 213	R 1 638 485 393	R 2 256 383 954	-R 617 898 561
R 2 032	R 1 771 950 000	R 2 742 656 200	-R 970 706 200
R 2 035	R 1 058 600 000	R 1 674 281 800	-R 615 681 800
R 209	R 526 639 000	R 307 675 000	R 218 964 000
R 2 037	R 1 063 984 828	R 1 473 402 548	-R 409 417 720
R 2 040	R 634 726 000	R 730 273 200	-R 95 547 200
R 214	R 161 290 000	R 342 712 900	-R 181 422 900
R 2 044	R 755 710 000	R 242 400 000	R 513 310 000
R 2 048	R 1 871 176 000	R 4 316 665 943	-R 2 445 489 943
<b>TOTAL</b>	<b>R 20 377 586 221</b>	<b>R 23 125 167 145</b>	<b>-R 2 747 580 924</b>

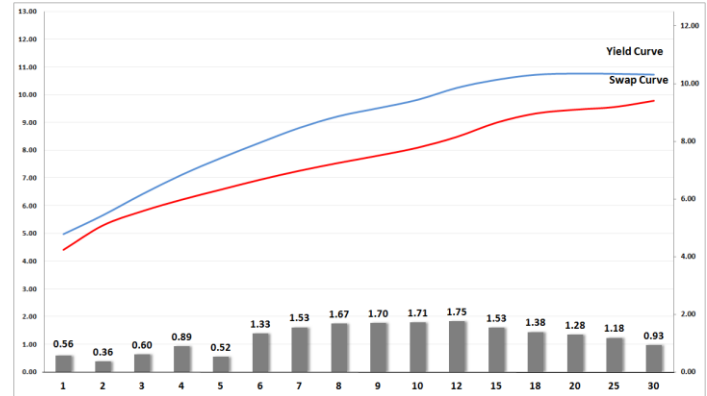
### CORPORATE SPREADS

BOND	COMPANION	COMPANIONS	CURRENT	PRIOR	CHANGE
CLN706	8/31/2024	R 2 023	112.5	0	112.5
CLN703	2/28/2023	R 2 023	75	0	75
CCT01	6/23/2023	R 186	-2	-10	8
CCT02	6/12/2024	R 186	21	13	8
SBS46	2/15/2023	R 2 023	48	41.5	6.5
MBP046	2/26/2022	JIBAR	63	57	6
CLN619	11/30/2021	JIBAR	165	160	5
SBS31	6/12/2027	R 186	17	13	4
SBS38	1/29/2025	R 186	-85.5	-89.5	4
SBS51	1/31/2024	R 186	-137.5	-141	3.5
SBS41	11/12/2022	R 2 023	29.5	26.5	3
SBS58	6/12/2027	JIBAR	136	135	1
SBS53	5/3/2027	JIBAR	135.5	135	0.5
SBS57	6/12/2024	JIBAR	103	103.5	-0.5
FRJ23	7/31/2023	JIBAR	97	98	-1
FRJ22	3/7/2022	JIBAR	56	58	-2
FRX30	1/31/2030	R 2 030	-44	-41	-3
NTC26	12/7/2023	JIBAR	142	145	-3
RWL26	6/30/2026	JIBAR	219	223	-4
FRC360	1/31/2024	JIBAR	231	235.6	-4.6
ASN611	3/31/2022	JIBAR	355	360	-5
CLN648	8/19/2025	JIBAR	275	280	-5
FRC349	7/31/2023	JIBAR	255	260	-5
FRC356	1/31/2024	JIBAR	251	256	-5
FRX31	2/21/2031	R 213	-51	-46	-5
FRX32	3/31/2032	R 2 032	-63	-58	-5
FRC348	7/31/2023	JIBAR	284	289.6	-5.6
ASN683	8/31/2026	JIBAR	318	324	-6
MMIG05	8/12/2022	R 2 023	78.9	85	-6.1
FRC364	2/28/2024	JIBAR	344	350.5	-6.5
ASN617	2/28/2024	JIBAR	364	371	-7
MTN07	7/13/2022	JIBAR	80	87	-7

### Yield Curve- Week on Week



Bond Rates	Open	High	Low	Close
R 2 040	10.795	11.125	10.785	10.910
R 209	10.395	10.745	10.395	10.570
R 186	7.620	7.900	7.620	7.880



### IMPORTANT ECONOMIC INDICATORS

Date	Time	Country	Event	Month	Previous	Consensus	Forecast
12-Oct-21	08:00:00	UK	Unemployment Rate AUG	Aug'21	4.60%	4.50%	4.60%
	13:00:00	SA	Manufacturing Production YoY A Aug'21	Aug'21	-4.10%		3.80%
13-Oct-21	13:00:00	SA	Retail Sales YoY AUG	Aug'21	-0.80%		1.30%
	14:30:00	US	Inflation Rate YoY SEP	Sept'21	5.30%	5.40%	5.30%
14-Oct-21	14:30:00	US	Initial Jobless Claims 09/OCT	Oct'21	326K		315K
	14:30:00	US	PPI YoY SEP	Sept'21	8.30%		8.40%
15-Oct-21	14:30:00	US	Retail Sales YoY SEP	Sept'21	15.10%		9.00%

### PERFORMANCE

Performance	Total Return		
	MtD	YtD	YoY
ALBI	-2.09%	6.59%	13.01%
GOVI	-2.11%	6.53%	12.92%
1 to 3 Years	0.01%	3.25%	4.05%
3 to 7 Years	-1.02%	2.26%	5.25%
7 to 12 Years	-2.83%	5.10%	11.82%
Over 12 Years	-2.34%	10.09%	19.34%

### AUCTION RESULTS FOR THE WEEK

Government Bond Auction Results			
Bonds	R 2 030	R 2 035	R 2 044
Amount on Auction (R'm)	1300	1300	1300
Bids Received (R'm)	3420	4585	4575
Bid to Cover	2.63	3.53	3.52
Clearing Yield (%)	9.395	10.582	10.969

Inflation Linked Bond Auction Results (08 Oct 2021)			
Bonds	R 2 029	R 2 038	R 2 050
Coupon	1.880	2.250	2.50
Amount issued (R'm)	0	570	630
Bids received (R'm)	250	730	1030
Bid to Cover	0.000	1.281	1.635
Clearing Yield (%)	0.000	4.192	4.201

### AUCTION INVITATION FOR THE UPCOMING WEEK

Government Bond Auction			
Bonds	R 2 030	R 2 040	R 2 048
Coupon	8.000	9.000	8.800
Amount on Offer (R'm)	1300	1300	1300
Inflation Linked Bond Auction			
Bonds	R 2 029	R 2 038	R 2 050
Total Amount (R'm)		1200	

### TURNOVER STATISTICS

	R' Bn					
	Standard			Repo		
	07-Oct '20	07-Oct '21	Change	07-Oct '20	07-Oct '21	Change
Daily	52.54 bn	64.95 bn	12.41 bn	11.58 bn	36.56 bn	24.98 bn
Week to Date	107.65 bn	175.88 bn	68.23 bn	142.97 bn	251.65 bn	108.68 bn
Month to Date	172.28 bn	203.01 bn	30.73 bn	198.08 bn	284.32 bn	86.24 bn
Year to Date	8 846.41 bn	7 708.71 bn	-1 137.70 bn	8 789.53 bn	9 346.18 bn	556.64 bn