

SA MONEY MARKET REPORT

06 March 2020

THE PREVIOUS WEEK IN REVIEW

1. MONEY MARKET INTEREST RATES

SPOT RATES	21-Feb	28-Feb	06-Mar	Change
Repo Rate	6.25%	6.25%	6.25%	0.00%
Treasury Bill 91 days(D)	6.31%	6.20%	6.28%	0.08%
Treasury Bill 91 days(Y)	6.41%	6.29%	6.38%	0.09%
Treasury Bill 182days(D)	6.57%	6.60%	6.51%	-0.09%
Treasury Bill 182days(Y)	6.79%	6.83%	6.73%	-0.10%
Treasury Bill 273days(D)	6.47%	6.54%	6.43%	-0.11%
Treasury Bill 273days(Y)	6.79%	6.88%	6.75%	-0.13%
Treasury Bill 364days(Y)	6.78%	6.68%	6.59%	-0.09%
3 Month NCD	6.50%	6.45%	6.45%	0.00%
6 Month NCD	6.95%	6.88%	6.75%	-0.13%
9 Month NCD	7.05%	7.03%	6.83%	-0.20%
12 Month NCD	7.20%	7.18%	6.98%	-0.20%
18 Month NCD (YTM)	7.04%	7.03%	6.85%	-0.18%
24 Month NCD (YTM)	7.08%	7.08%	6.88%	-0.20%
36 Month NCD (YTM)	7.20%	7.15%	7.07%	-0.08%
R208 (YTM)	6.50%	6.25%	6.03%	-0.220%

MONEY MARKET RATES (NACQ)	21-Feb	28-Feb	06-Mar	Change
3 Month NCD	6.50%	6.45%	6.45%	0.00%
6 Month NCD	6.78%	6.70%	6.59%	-0.12%
9 Month NCD	6.87%	6.85%	6.66%	-0.19%
12 Month NCD	7.01%	6.99%	6.80%	-0.19%
18 Month NCD	6.86%	6.85%	6.68%	-0.17%
24 Month NCD	6.89%	6.89%	6.71%	-0.19%
36 Month NCD	7.01%	6.96%	6.89%	-0.07%
R 208	6.50%	6.25%	6.03%	-0.220%

MONEY MARKET LIQUIDITY	21-Feb	28-Feb	06-Mar	Change
Shortage (Rm)	56000	56000	56000	0
Notes (Rm)	138149	149129	148648	-481
Reverse Repo (Rm)	0	0	0	0
Debentures (Rm)	0	7	7	0
Liquidity Requirements (Rm)	58601	54760	56778	2018

2. JIBAR RATES (Nominal Terms)

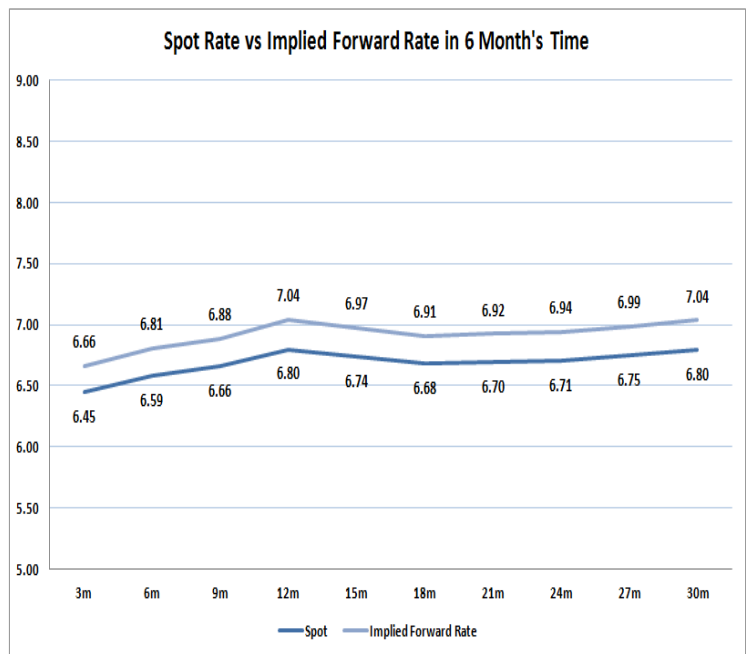
JIBAR (Nominal Terms)	21-Feb	28-Feb	06-Mar	Change
1 Month	6.38%	6.36%	6.32%	-0.04%
3 Month	6.55%	6.51%	6.49%	-0.02%
6 Month	7.05%	6.92%	6.81%	-0.11%
9 Month	7.15%	7.03%	6.89%	-0.13%
12 Month	7.33%	7.15%	7.04%	-0.11%

3. CURRENT AND FUTURE YIELD CURVES (NACQ)

In the graph below the implied forward rates in six months' time are plotted opposite the current spot rates for the corresponding number of months. The implied forward rates are derived from a break-even calculation approach.

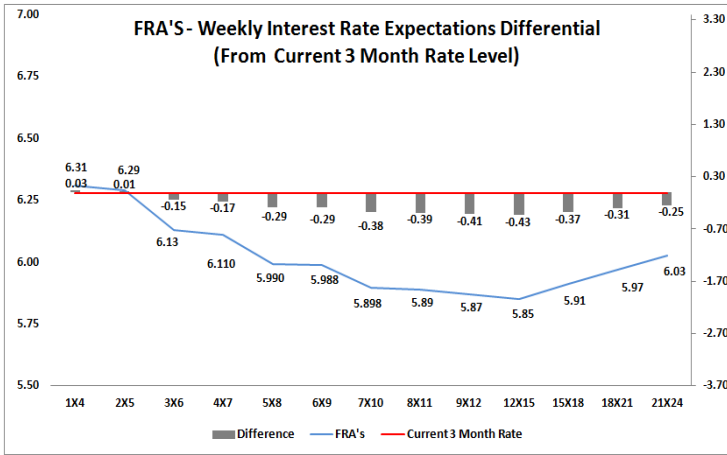
The rates represented in the line graphs below are in NACQ terms.

According to the break-even (forward/forward) calculation, the 12 and 18-month interest rates will be 7.04% and 6.91% respectively in six months time.



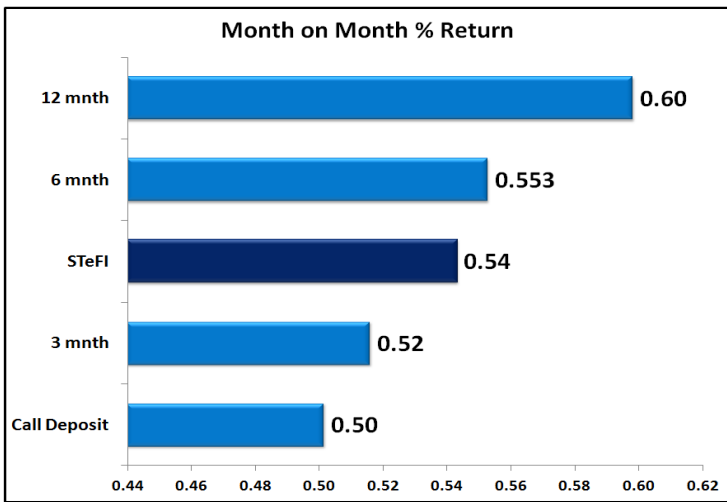
4. FRA RATES (NACQ)

FRA's	21-Feb	28-Feb	06-Mar	Change
1x4	6.42%	6.35%	6.31%	-0.04%
3x6	6.38%	6.21%	6.13%	-0.08%
6x9	6.17%	6.06%	5.99%	-0.07%
9x12	6.08%	5.93%	5.87%	-0.05%
12x15	6.06%	5.91%	5.85%	-0.06%
15x18	6.09%	5.97%	5.91%	-0.06%
18x21	6.16%	6.03%	5.97%	-0.06%
21x24	6.24%	6.09%	6.03%	-0.06%
24x27	6.31%	6.14%	6.08%	-0.06%
27x30	6.38%	6.20%	6.14%	-0.06%

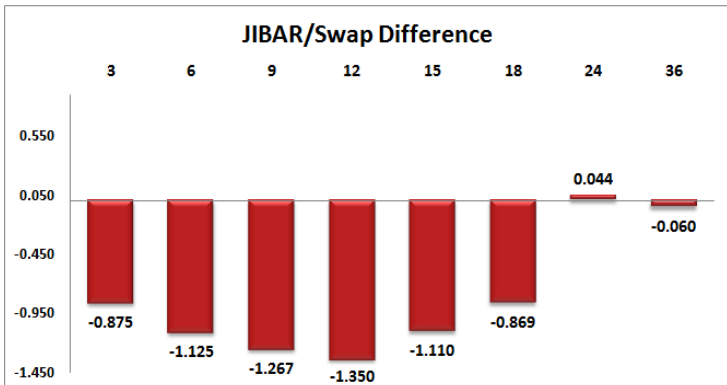
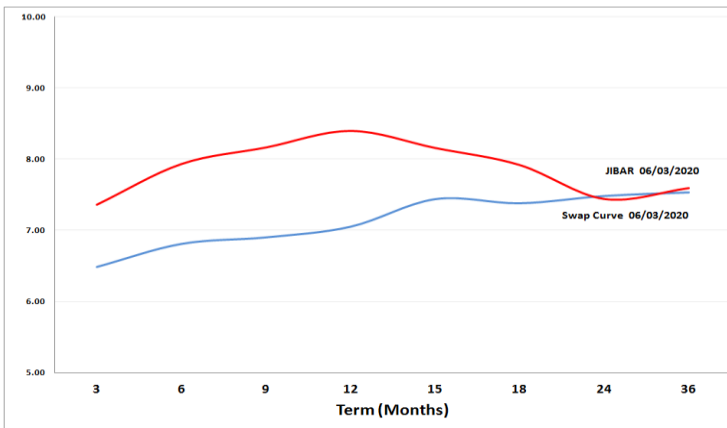


5. MONEY MARKET PERFORMANCE

STeFI (Month on Month) gained 0.54% with the best return 0.60% in the 12-Month area.



6. JIBAR and SWAPS - Curve



7. SARB AND NATIONAL TREASURY OPERATIONS

SARB DEBENTURES			
	Received	Allotted	Av. Rate
7 Days	0	0	0.000%
14 Days	0	0	0.000%
28 Days	0	0	0.000%
56 Days	0	0	0.000%

LONG TERM REVERSE REPO			
14Days			
	Allotted	Av. Rate	

56 Days			
	Allotted	Av. Rate	

TREASURY BILLS			
	Received	Allotted	Av. Rate
91 Days	R808m	R808m	6.38%
182 Days	R5470m	R2055m	6.73%
273 Days	R7424m	R2370m	6.75%

8. THE WEEK AHEAD

Date	Time	Country	Event	Month	Previous	Consensus	Forecast
09-Mar-20	01:50:00	Japan	GDP Growth Rate QoQ Final	Q4	0.10%	-1.60%	-1.60%
01:50:00	Japan	GDP Growth Annualized Final	Q4	0.50%	-6.30%	-6.30%	
01:50:00	Japan	Current Account	Jan'20	¥524B	¥735.3B	¥520B	
01:50:00	Japan	Bank Lending YoY	Feb'20	1.90%		2.40%	
09:00:00	Germany	Balance of Trade	Jan'20	€15.2B		€13.4B	
09:00:00	Germany	Industrial Production MoM	Jan'20	-3.50%	0.10%	1.50%	
09:00:00	Germany	Current Account	Jan'20	€29.4B	€20.1B	€20.1B	
17:00:00	US	Consumer Inflation Expectations	Feb'20	2.50%		2.50%	
17:30:00	US	6-Month Bill Auction		1.01%			
17:30:00	US	3-Month Bill Auction		1.16%			
10-Mar-20	03:30:00	China	Inflation Rate YoY	Feb'20	5.40%	4.90%	5.90%
03:30:00	China	Inflation Rate MoM	Feb'20	1.40%	0.80%		
03:30:00	China	PPI YoY	Feb'20	0.10%	0.10%	-1.00%	
08:00:00	Japan	Machine Tool Orders YoY	Feb'20	-35.60%		-22.00%	
12:00:00	EU	GDP Growth Rate QoQ 3rd Est	Q4	0.30%	0.10%	0.10%	
12:00:00	EU	GDP Growth Rate YoY 3rd Est	Q4	1.20%	0.90%	0.90%	
12:00:00	EU	Employment Change QoQ Final	Q4	0.10%	0.30%	0.30%	
12:00:00	EU	Employment Change YoY Final	Q4	1.00%	1.00%	1.00%	
12:00:00	US	NETB Business Optimism Index	Feb'20	104.3		103	
12:45:00	UK	10-Year Treasury Gilt Auction		0.51%			
14:55:00	US	Redbook YoY 07/MAR		5.90%			
14:55:00	US	Redbook MoM 07/MAR		-0.10%			
18:00:00	US	WASDE Report					
19:00:00	US	3-Year Note Auction		1.39%			
22:30:00	US	API Crude Oil Stock Change 06/MAR		1.69M			
11-Mar-20	11:30:00	UK	Balance of Trade	Jan'20	£7.715B		£-3.7B
11:30:00	UK	Manufacturing Production YoY	Jan'20	-2.50%	-1.10%	-1.10%	
11:30:00	UK	GDP 3-Month Avg	Jan'20	0.00%	0.00%	0.00%	
11:30:00	UK	Construction Output YoY	Jan'20	5.00%	2.90%	2.90%	
11:30:00	UK	Industrial Production YoY	Jan'20	-1.80%	-0.70%	-0.70%	
11:30:00	UK	Manufacturing Production MoM	Jan'20	0.30%	0.40%	0.40%	
11:30:00	UK	GDP YoY	Jan'20	1.20%	0.70%	0.70%	
11:30:00	UK	Goods Trade Balance	Jan'20	€0.85B		€-6.2B	
11:30:00	UK	GDP MoM	Jan'20	0.30%	0.00%	0.00%	
12:40:00	Germany	10-Year Bund Auction		-0.38%			
14:30:00	UK	Spring Budget 2020					
14:30:00	US	Core Inflation Rate YoY	Feb'20	2.30%	2.30%	2.30%	
14:30:00	US	Inflation Rate YoY	Feb'20	2.50%	2.30%	2.30%	
14:30:00	US	Inflation Rate MoM	Feb'20	0.10%	0.00%	0.10%	
14:30:00	US	Core Inflation Rate MoM	Feb'20	0.20%	0.20%	0.20%	
16:00:00	UK	NIESR Monthly GDP Tracker	Feb'20	0.00%	0.10%	0.10%	
20:00:00	UK	Monthly Budget Statement		\$-3B		\$-240B	
12-Mar-20	01:50:00	Japan	BSI Large Manufacturing QoQ Q1		-7.8		-10
01:50:00	Japan	Foreign Bond Investment 07/MAR		¥-489.7B			
01:50:00	Japan	Stock Investment by Foreigners 07/MAR		¥-745B			
01:50:00	Japan	PPI MoM	Feb'20	0.20%		0.30%	
01:50:00	Japan	PPI YoY	Feb'20	1.70%		1.60%	
11:30:00	SA	Gold Production YoY	Jan'20	24.90%		11.00%	
11:30:00	SA	Mining Production YoY	Jan'20	1.80%		1.20%	
12:00:00	SA	Industrial Production YoY	Jan'20	-4.10%	-3.60%	-3.60%	
13:00:00	SA	Manufacturing Production YoY	Jan'20	-5.90%	-0.60%	-0.60%	
14:30:00	US	Initial Jobless Claims 07/MAR		216K			
14:30:00	US	Continuing Jobless Claims 29/	Feb'20	1729K			
14:30:00	US	PPI YoY	Feb'20	2.10%	2.00%	2.00%	
14:45:00	EU	Deposit Facility Rate		-0.50%	-0.50%	-0.60%	
14:45:00	EU	ECB Interest Rate Decision		0.00%	0.00%	0.00%	
14:45:00	EU	Marginal Lending Rate		0.25%	0.25%	0.25%	
15:30:00	EU	ECB Press Conference					
16:30:00	US	EIA Natural Gas Stocks Change 06/MAR		-109Bcf			
17:30:00	US	4-Week Bill Auction		0.93%			
17:30:00	US	8-Week Bill Auction		0.82%			
19:00:00	US	30-Year Bond Auction		2.06%			
13-Mar-20	06:30:00	Japan	Tertiary Industry Index MoM	Jan'20	-0.20%		0.60%
08:00:00	China	Vehicle Sales YoY	Feb'20	-18.70%		-60.00%	
09:00:00	China	FDI (YTD) YoY	Feb'20	4.00%		3.00%	
09:00:00	Germany	Inflation Rate YoY Final	Feb'20	1.70%	1.70%	1.70%	
09:00:00	Germany	Inflation Rate MoM Final	Feb'20	-0.60%	0.40%	0.40%	
11:30:00	UK	BoE FPC Meeting					
12:10:00	SA	Business Confidence Q1		26		23	
14:30:00	US	Export Prices YoY	Feb'20	0.50%	-0.50%	-0.50%	
14:30:00	US	Import Prices YoY	Feb'20	0.30%	-1.30%	-1.30%	
16:00:00	US	Michigan Current Conditions Prel MAR		114.8		114.2	
16:00:00	US	Michigan 5 Year Inflation Expectations Prel MAR		2.30%		2.20%	
16:00:00	US	Michigan Inflation Expectations Prel MAR		2.40%		2.40%	
16:00:00	US	Michigan Consumer Expectations Prel MAR		92.1		90.5	
16:00:00	US	Michigan Consumer Sentiment Prel MAR		101		97.5	
19:00:00	US	Baker Hughes Oil Rig Count 13/MAR					
19:00:00	US	Baker Hughes Total Rig Count 13/MAR					

Major Central Banks Rate Decisions			
Central Bank	Next Meeting	Last Change	Current Interest Rate
European Central Bank	12-Mar-20	10-Mar-16	0.00%
Bank of Japan	19-Mar-20	29-Jan-16	-0.10%
Bank of England	26-Mar-20	02-Aug-18	0.75%
Federal Reserve	18-Mar-20	03-Mar-20	1.25%
SARB	19-Mar-20	16-Jan-20	6.25%