



SA MONEY MARKET REPORT

09 February 2018

THE PREVIOUS WEEK IN REVIEW

1. MONEY MARKET INTEREST RATES

| SPOT RATES | 29-Jan | 02-Feb | 09-Feb | Change |
|--------------------------|--------|--------|--------|---------|
| Repo Rate | 6.75% | 6.75% | 6.75% | 0.00% |
| Treasury Bill 91 days(D) | 7.21% | 7.18% | 7.14% | -0.04% |
| Treasury Bill 91 days(Y) | 7.34% | 7.31% | 7.27% | -0.04% |
| Treasury Bill 182days(D) | 7.28% | 7.22% | 7.22% | 0.00% |
| Treasury Bill 182days(Y) | 7.55% | 7.49% | 7.49% | 0.00% |
| Treasury Bill 273days(D) | 7.18% | 7.17% | 7.16% | -0.01% |
| Treasury Bill 273days(Y) | 7.59% | 7.57% | 7.57% | 0.00% |
| Treasury Bill 364days(Y) | 7.62% | 7.61% | 7.58% | -0.03% |
| 3 Month NCD | 7.03% | 7.08% | 7.08% | 0.00% |
| 6 Month NCD | 7.48% | 7.53% | 7.53% | 0.00% |
| 9 Month NCD | 7.58% | 7.65% | 7.65% | 0.00% |
| 12 Month NCD | 7.85% | 7.88% | 7.93% | 0.05% |
| 18 Month NCD (YTM) | 7.73% | 7.78% | 7.80% | 0.02% |
| 24 Month NCD (YTM) | 7.78% | 7.83% | 7.86% | 0.03% |
| 36 Month NCD (YTM) | 8.13% | 8.16% | 8.16% | -0.01% |
| R204 (YTM) | 6.99% | 7.04% | 7.02% | -0.020% |

| MONEY MARKET RATES (NACQ) | 29-Jan | 02-Feb | 09-Feb | Change |
|---------------------------|--------|--------|--------|---------|
| 3 Month NCD | 6.98% | 6.98% | 6.98% | 0.00% |
| 6 Month NCD | 7.27% | 7.32% | 7.32% | 0.00% |
| 9 Month NCD | 7.37% | 7.44% | 7.44% | 0.00% |
| 12 Month NCD | 7.63% | 7.65% | 7.70% | 0.05% |
| 18 Month NCD | 7.52% | 7.56% | 7.58% | 0.02% |
| 24 Month NCD | 7.56% | 7.61% | 7.63% | 0.02% |
| 36 Month NCD | 7.89% | 7.92% | 7.92% | 0.00% |
| R 204 | 6.99% | 7.04% | 7.02% | -0.020% |

| MONEY MARKET LIQUIDITY | 29-Jan | 02-Feb | 09-Feb | Change |
|-----------------------------|--------|--------|--------|--------|
| Shortage (Rm) | 56000 | 56000 | 56000 | 0 |
| Notes (Rm) | 131520 | 138344 | 133635 | -4709 |
| Reverse Repo (Rm) | 0 | 0 | 0 | 0 |
| Debentures (Rm) | 100 | 250 | 274 | 24 |
| Liquidity Requirements (Rm) | 58182 | 54081 | 56594 | 2513 |

2. JIBAR RATES (Nominal Terms)

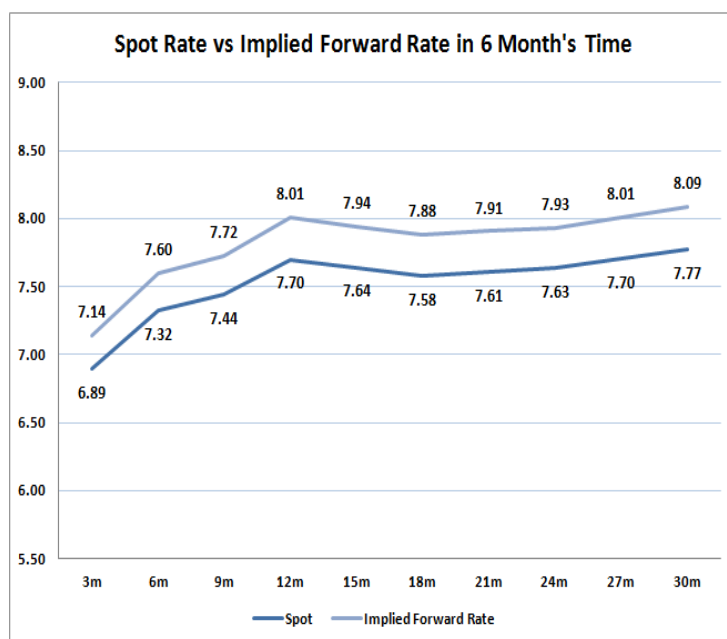
| JIBAR (Nominal Terms) | 29-Jan | 02-Feb | 09-Feb | Change |
|-----------------------|--------|--------|--------|--------|
| 1 Month | 6.90% | 6.90% | 6.90% | 0.00% |
| 3 Month | 7.13% | 7.13% | 7.13% | 0.00% |
| 6 Month | 7.57% | 7.58% | 7.59% | 0.01% |
| 9 Month | 7.66% | 7.72% | 7.72% | 0.00% |
| 12 Month | 7.89% | 7.96% | 7.98% | 0.03% |

3. CURRENT AND FUTURE YIELD CURVES (NACQ)

In the graph below the implied forward rates in six months' time are plotted opposite the current spot rates for the corresponding number of months. The implied forward rates are derived from a break-even calculation approach.

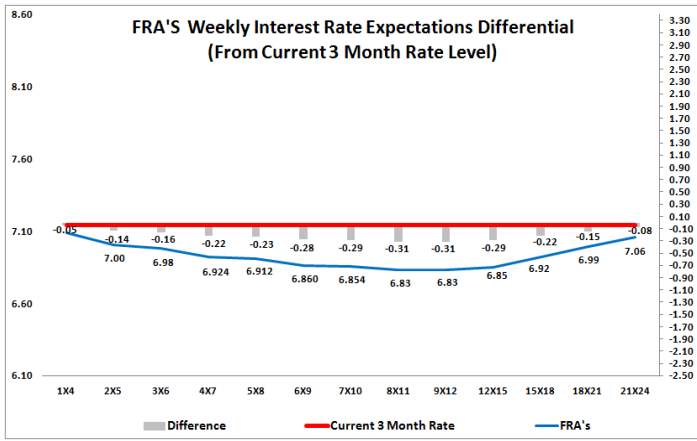
The rates represented in the line graphs below are in NACQ terms.

According to the break-even (forward/forward) calculation, the 12 and 18-month interest rates will be 8.01% and 7.88% respectively in six months time.



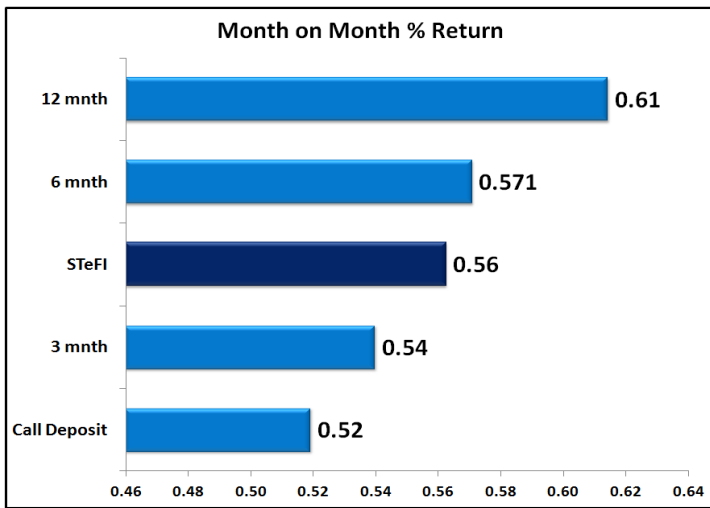
4. FRA RATES (NACQ)

| FRA's | 29-Jan | 02-Feb | 09-Feb | Change |
|-------|--------|--------|--------|--------|
| 1x4 | 7.09% | 7.10% | 7.09% | -0.01% |
| 3x6 | 6.95% | 7.01% | 6.98% | -0.03% |
| 6x9 | 6.78% | 6.88% | 6.86% | -0.02% |
| 9x12 | 6.74% | 6.86% | 6.83% | -0.03% |
| 12x15 | 6.78% | 6.89% | 6.85% | -0.04% |
| 15x18 | 6.85% | 6.96% | 6.92% | -0.04% |
| 18x21 | 6.92% | 7.04% | 6.99% | -0.05% |
| 21x24 | 6.99% | 7.12% | 7.06% | -0.06% |
| 24x27 | 7.06% | 7.20% | 7.13% | -0.07% |
| 27x30 | 7.13% | 7.29% | 7.20% | -0.08% |

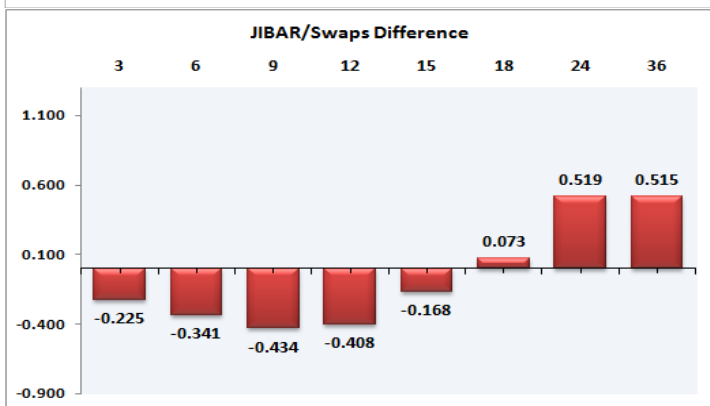
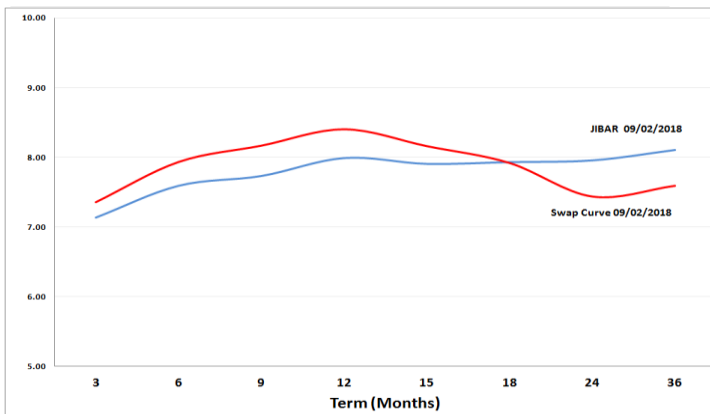


5. MONEY MARKET PERFORMANCE

STeFI (Month on Month) gained 0.56% with the best return 0.61% in the 12-Month area.



6. JIBAR and SWAPS - Curve



7. SARB AND NATIONAL TREASURY OPERATIONS

| SARB DEBENTURES | | | |
|------------------------|----------|----------|----------|
| | Received | Allotted | Av. Rate |
| 7 Days | 174 | 174 | 6.720% |
| 14 Days | 0 | 0 | 0.000% |
| 28 Days | 0 | 0 | 0.000% |
| 56 Days | 0 | 0 | 0.000% |
| LONG TERM REVERSE REPO | | | |
| 14Days | | | |
| | Allotted | Av. Rate | |
| 56 Days | | | |
| | Allotted | Av. Rate | |
| TREASURY BILLS | | | |
| | Received | Allotted | Av. Rate |
| 91 Days | R4552m | R1800m | 7.27% |
| 182 Days | R4467m | R2000m | 7.49% |
| 273 Days | R3980m | R2100m | 7.57% |

8. THE WEEK AHEAD

| Date | Time | Country | Event | Previous | Forecast | |
|-----------|-----------|---------------------------------------|---|--------------------------|----------|--|
| 12-Feb-18 | 04:00:00 | China | M2 Money Supply (YoY) | 8.20% | 8.40% | |
| | 04:00:00 | China | New Loans | 584.4B | 2000B | |
| | 04:00:00 | China | FDI - Foreign Direct Investment (YTD) (YoY) | 7.90% | | |
| | 18:30:00 | US | 3-Month Bill Auction | 1.50% | | |
| | 18:30:00 | US | 6-Month Bill Auction | 1.65% | | |
| | 21:00:00 | US | Monthly Budget Statement | -23B | 108.8B | |
| | 01:50:00 | Japan | Domestic Corporate Goods Price Index (MoM) | 0.20% | 0.20% | |
| | 01:50:00 | Japan | Domestic Corporate Goods Price Index (YoY) | 3.10% | 2.70% | |
| | 13-Feb-18 | 11:30:00 | UK | Retail Price Index (YoY) | 4.10% | |
| | | 11:30:00 | UK | Retail Price Index (MoM) | 0.80% | |
| 11:30:00 | | UK | DCLG House Price Index (YoY) | 5.10% | 5.70% | |
| 11:30:00 | | UK | Producer Price Index - Output (YoY) n.s.a | 3.30% | 3.50% | |
| 11:30:00 | | UK | Producer Price Index - Output (MoM) n.s.a | 0.40% | 0.30% | |
| 11:30:00 | | UK | PPI Core Output (MoM) n.s.a | 0.30% | 0.20% | |
| 11:30:00 | | UK | PPI Core Output (YoY) n.s.a | 2.50% | 2.10% | |
| 11:30:00 | | UK | Producer Price Index - Input (YoY) n.s.a | 4.90% | 3.90% | |
| 11:30:00 | | UK | Producer Price Index - Input (MoM) n.s.a | 0.10% | 0.70% | |
| 11:30:00 | | SA | Unemployment Total | 6.2M | | |
| 11:30:00 | | SA | Unemployment Rate (%) | 27.70% | | |
| 11:30:00 | | UK | Consumer Price Index (MoM) | 0.40% | -0.40% | |
| 11:30:00 | | UK | Core Consumer Price Index (YoY) | 2.50% | 2.60% | |
| 11:30:00 | | UK | Consumer Price Index (YoY) | 3% | 2.90% | |
| 13:00:00 | | US | FOMC Business Optimism Index | 104.9 | | |
| 15:00:00 | | US | FOMC Member Mester speech | | | |
| 15:55:00 | | US | Redbook index (YoY) | 3% | | |
| 15:55:00 | | US | Redbook index (MoM) | 0% | | |
| 18:30:00 | | US | 4-Week Bill Auction | 1.48% | | |
| 23:30:00 | | US | API Weekly Crude Oil Stock | 1.05M | | |
| 01:50:00 | Japan | Gross Domestic Product (QoQ) | 0.60% | 0.20% | | |
| 01:50:00 | Japan | Gross Domestic Product Deflator (YoY) | 0.10% | -0.30% | | |
| 01:50:00 | Japan | Gross Domestic Product Annualized | 2.50% | 0.90% | | |
| 14-Feb-18 | 09:00:00 | Germany | Harmonised Index of Consumer Prices (YoY) | 1.40% | 1.40% | |
| | 09:00:00 | Germany | Consumer Price Index (MoM) | -0.70% | -0.70% | |
| | 09:00:00 | Germany | Consumer Price Index (YoY) | 1.60% | 1.40% | |
| | 09:00:00 | Germany | Harmonised Index of Consumer Prices (MoM) | 2.1% | | |
| | 09:00:00 | Germany | Gross Domestic Product (YoY) | 2.30% | | |
| | 09:00:00 | Germany | Gross Domestic Product (QoQ) | 0.80% | 0.60% | |
| | 10:00:00 | Germany | German Buba President Weidmann speech | | | |
| | 12:00:00 | EU | Gross Domestic Product s.a. (QoQ) | 0.60% | % | |
| | 12:00:00 | EU | Gross Domestic Product s.a. (YoY) | 2.60% | 2.70% | |
| | 12:00:00 | EU | Industrial Production w.d.a. (YoY) | 3.20% | 4.10% | |
| | 12:00:00 | EU | Industrial Production s.a. (MoM) | 1% | -0.10% | |
| | 12:00:00 | Germany | 30-y Bond Auction | 1.28% | | |
| | 13:00:00 | US | Retail Sales (YoY) | 8.20% | | |
| | 14:00:00 | US | MBA Mortgage Applications | 0.70% | | |
| | 15:30:00 | US | Retail Sales ex Autos (MoM) | 0.40% | 0.50% | |
| | 15:30:00 | US | Retail Sales control group | 0.30% | | |
| | 15:30:00 | US | Retail Sales (MoM) | 0.40% | 0.30% | |
| | 15:30:00 | US | Consumer Price Index Ex Food & Energy (MoM) | 0.30% | 0.30% | |
| | 15:30:00 | US | Consumer Price Index Ex Food & Energy (YoY) | 1.80% | 1.80% | |
| | 15:30:00 | US | Consumer Price Index (YoY) | 2.10% | 2.10% | |
| 15:30:00 | US | Consumer Price Index n.s.a. (MoM) | 245.524 | 246.84 | | |
| 15:30:00 | US | Consumer Price Index (MoM) | 0.10% | 0.30% | | |
| 15:30:00 | US | Consumer Price Index Core s.a | 254.426 | 254.33 | | |
| 17:00:00 | US | Business Inventories | 0.40% | 0.10% | | |
| 17:30:00 | US | EIA Crude Oil Stocks change | 1.895M | 1.769M | | |
| 01:50:00 | Japan | Machinery Orders (MoM) | 5.70% | -2.30% | | |
| 01:50:00 | Japan | Machinery Orders (YoY) | 4.10% | 2.20% | | |
| 15-Feb-18 | 02:00:00 | China | Chinese New Year Eve | | | |
| | 06:30:00 | Japan | Industrial Production (YoY) | 4.20% | 3.90% | |
| | 06:30:00 | Japan | Capacity Utilization | 0% | -0.30% | |
| | 08:00:00 | Japan | Machine Tool Orders (YoY) | 48.30% | | |
| | 12:00:00 | EU | Trade Balance n.s.a. | 26.3B | 30.2B | |
| | 12:00:00 | EU | Trade Balance s.a. | 22.5B | 21.1B | |
| | 15:30:00 | US | NY Empire State Manufacturing Index | 17.7 | 17.7 | |
| | 15:30:00 | US | Producer Price Index (YoY) | 2.60% | 2.20% | |
| | 15:30:00 | US | Producer Price Index ex Food & Energy (MoM) | -0.10% | 0.30% | |
| | 15:30:00 | US | Producer Price Index ex Food & Energy (YoY) | 2.30% | 2.50% | |
| | 15:30:00 | US | Producer Price Index (MoM) | -0.10% | 0% | |
| | 15:30:00 | US | Continuing Jobless Claims | 1.923M | 2.006M | |
| | 15:30:00 | US | Initial Jobless Claims | 221K | 237K | |
| | 15:30:00 | US | Philadelphia Fed Manufacturing Survey | 22.2 | 22 | |
| | 16:15:00 | US | Capacity Utilization | 77.90% | 78% | |
| | 16:15:00 | US | Industrial Production (MoM) | 0.90% | 0.40% | |
| | 17:00:00 | US | NAHB Housing Market Index | 72 | 73 | |
| | 17:30:00 | US | EIA Natural Gas Storage change | -119B | | |
| | 23:00:00 | US | Total Net TIC Flows | 33.8B | | |
| | 23:00:00 | US | Net Long-Term TIC Flows | 57.5B | | |
| 01:50:00 | Japan | Foreign investment in Japan stocks | -126.7B | | | |
| 01:50:00 | Japan | Foreign bond investment | -866.6B | | | |
| 16-Feb-18 | 02:00:00 | China | Chinese New Year | | | |
| | 09:00:00 | Germany | Wholesale Price Index (YoY) | 1.80% | | |
| | 09:00:00 | Germany | Wholesale Price Index (MoM) | -0.30% | | |
| | 11:30:00 | UK | Retail Sales (MoM) | -1.50% | 1.50% | |
| | 11:30:00 | UK | Retail Sales ex-Fuel (MoM) | -1.60% | 0% | |
| | 11:30:00 | UK | Retail Sales (YoY) | 1.40% | 0.90% | |
| | 11:30:00 | UK | Retail Sales ex-Fuel (YoY) | 1.30% | 1% | |
| | 15:30:00 | US | Building Permits Change | -0.10% | 3.50% | |
| | 15:30:00 | US | Building Permits (MoM) | 1.302M | 1.3M | |
| | 15:30:00 | US | Housing Starts (MoM) | 1.192M | 1.215M | |
| | 15:30:00 | US | Housing Starts Change | -8.20% | | |
| | 15:30:00 | US | Import Price Index (MoM) | 0.10% | 0.50% | |
| | 15:30:00 | US | Export Price Index (YoY) | 2.60% | 2.90% | |
| | 15:30:00 | US | Import Price Index (YoY) | 3% | 3.10% | |
| | 15:30:00 | US | Export Price Index (MoM) | -0.10% | 0.30% | |
| 17:00:00 | US | Michigan Consumer Sentiment Index | 95.7 | 95.5 | | |
| 20:00:00 | US | Baker Hughes US Oil Rig Count | | | | |

Major Central Banks Rate Decisions

| Central Bank | Next Meeting | Last Change | Current Interest Rate |
|-----------------------|--------------|-------------|-----------------------|
| European Central Bank | 08-Mar-18 | 10-Mar-16 | 0.00% |
| Bank of Japan | 09-Mar-18 | 29-Jan-16 | -0.10% |
| Bank of England | 22-Mar-18 | 02-Nov-17 | 0.50% |
| Federal Reserve | 21-Mar-18 | 13-Dec-17 | 1.50% |
| SARB | 28-Mar-18 | 20-Jul-17 | 6.75% |