



## SA MONEY MARKET REPORT

14 February 2020

### THE PREVIOUS WEEK IN REVIEW

#### 1. MONEY MARKET INTEREST RATES

SPOT RATES	31-Jan	07-Feb	14-Feb	Change
Repo Rate	6.25%	6.25%	6.25%	0.00%
Treasury Bill 91 days(D)	6.45%	6.32%	6.32%	0.00%
Treasury Bill 91 days(Y)	6.56%	6.42%	6.42%	0.00%
Treasury Bill 182days(D)	6.72%	6.64%	6.61%	-0.03%
Treasury Bill 182days(Y)	6.96%	6.86%	6.83%	-0.03%
Treasury Bill 273days(D)	6.65%	6.55%	6.51%	-0.04%
Treasury Bill 273days(Y)	6.99%	6.89%	6.85%	-0.04%
Treasury Bill 364days(Y)	7.02%	6.88%	6.84%	-0.04%
3 Month NCD	6.50%	6.50%	6.50%	0.00%
6 Month NCD	7.03%	7.03%	7.03%	0.00%
9 Month NCD	7.15%	7.13%	7.13%	0.00%
12 Month NCD	7.35%	7.33%	7.33%	0.00%
18 Month NCD (YTM)	7.18%	7.16%	7.15%	-0.01%
24 Month NCD (YTM)	7.21%	7.18%	7.17%	-0.01%
36 Month NCD (YTM)	7.32%	7.30%	7.30%	0.00%
R208 (YTM)	6.58%	6.50%	6.50%	0.000%

MONEY MARKET RATES (NACQ)	31-Jan	07-Feb	14-Feb	Change
3 Month NCD	6.50%	6.50%	6.50%	0.00%
6 Month NCD	6.85%	6.85%	6.85%	0.00%
9 Month NCD	6.97%	6.94%	6.94%	0.00%
12 Month NCD	7.16%	7.13%	7.13%	0.00%
18 Month NCD	6.99%	6.98%	6.97%	-0.01%
24 Month NCD	7.02%	6.99%	6.98%	-0.01%
36 Month NCD	7.13%	7.11%	7.11%	0.00%
R 208	6.58%	6.50%	6.50%	0.000%

MONEY MARKET LIQUIDITY	31-Jan	07-Feb	14-Feb	Change
Shortage (Rm)	56000	56000	56000	0
Notes (Rm)	150094	147432	138825	-8607
Reverse Repo (Rm)	0	0	0	0
Debentures (Rm)	0	0	0	0
Liquidity Requirements (Rm)	57196	51322	56176	4854

#### 2. JIBAR RATES (Nominal Terms)

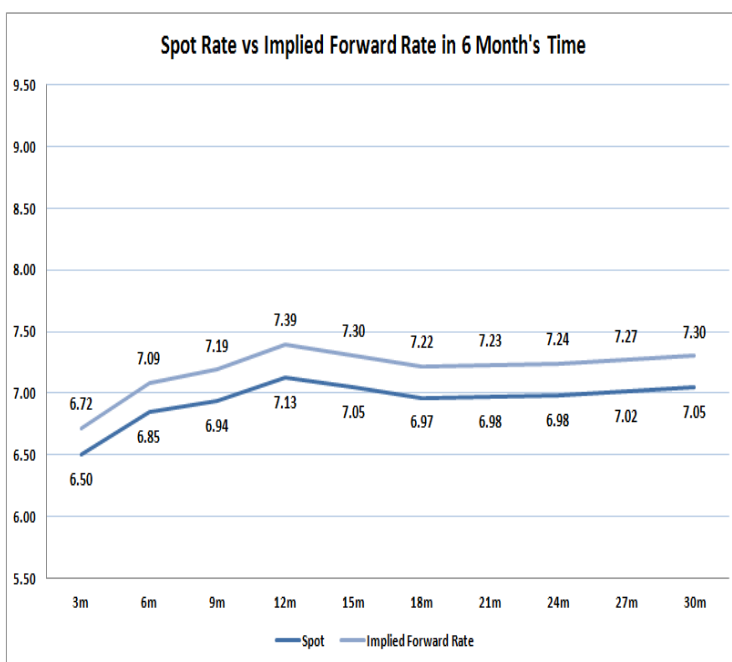
JIBAR (Nominal Terms)	31-Jan	07-Feb	14-Feb	Change
1 Month	6.38%	6.38%	6.38%	0.00%
3 Month	6.56%	6.56%	6.56%	0.00%
6 Month	7.11%	7.10%	7.10%	0.00%
9 Month	7.26%	7.20%	7.20%	0.00%
12 Month	7.45%	7.40%	7.40%	0.00%

#### 3. CURRENT AND FUTURE YIELD CURVES (NACQ)

In the graph below the implied forward rates in six months' time are plotted opposite the current spot rates for the corresponding number of months. The implied forward rates are derived from a break-even calculation approach.

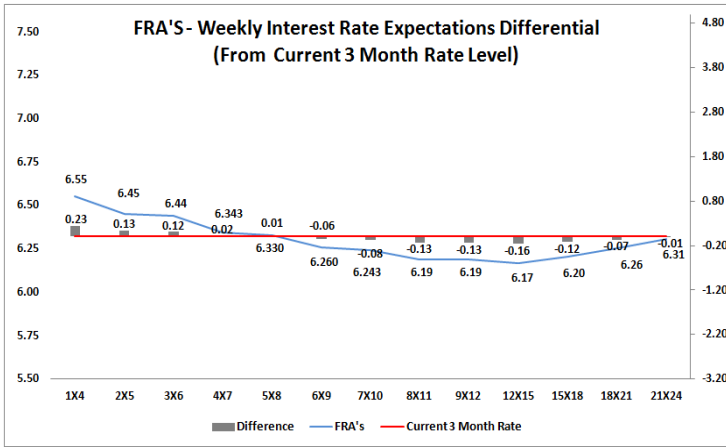
The rates represented in the line graphs below are in NACQ terms.

According to the break-even (forward/forward) calculation, the 12 and 18-month interest rates will be 7.39% and 7.22% respectively in six months time.



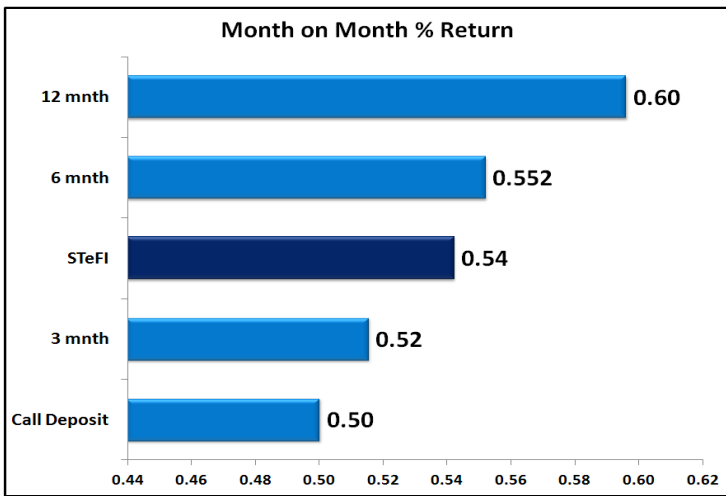
#### 4. FRA RATES (NACQ)

FRA's	31-Jan	07-Feb	14-Feb	Change
1x4	6.56%	6.54%	6.55%	0.01%
3x6	6.46%	6.44%	6.44%	0.00%
6x9	6.25%	6.26%	6.26%	0.00%
9x12	6.21%	6.20%	6.19%	-0.01%
12x15	6.20%	6.18%	6.17%	-0.01%
15x18	6.23%	6.20%	6.20%	0.00%
18x21	6.27%	6.25%	6.26%	0.00%
21x24	6.32%	6.30%	6.31%	0.01%
24x27	6.36%	6.35%	6.36%	0.01%
27x30	6.41%	6.40%	6.41%	0.01%

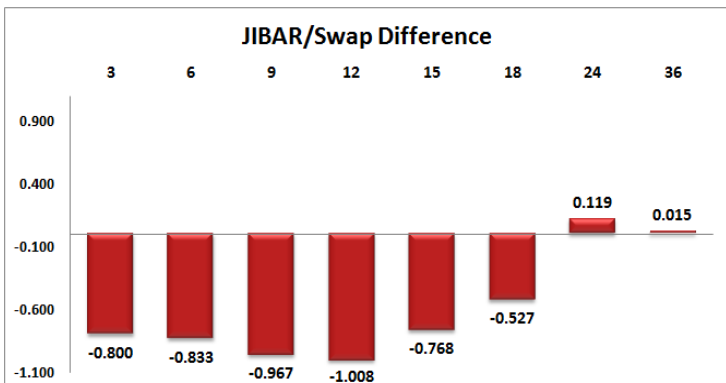
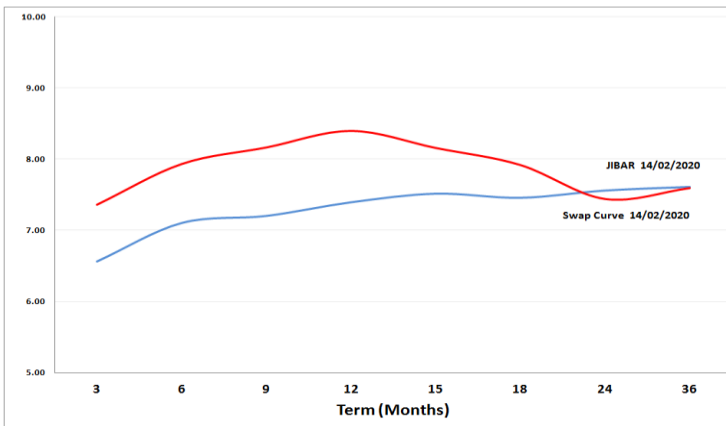


## 5. MONEY MARKET PERFORMANCE

STeFI (Month on Month) gained 0.54% with the best return 0.60% in the 12-Month area.



## 6. JIBAR and SWAPS - Curve



## 7. SARB AND NATIONAL TREASURY OPERATIONS

SARB DEBENTURES			
	Received	Allotted	Av. Rate
7 Days	521	493	6.250%
14 Days	0	0	0.000%
28 Days	0	0	0.000%
56 Days	0	0	0.000%

LONG TERM REVERSE REPO			
14Days			
	Allotted	Av. Rate	

56 Days			
	Allotted	Av. Rate	

TREASURY BILLS			
	Received	Allotted	Av. Rate
91 Days	R2079m	R879m	6.42%
182 Days	R5013m	R2055m	6.83%
273 Days	R7488m	R2370m	6.85%

## 8. THE WEEK AHEAD

Date	Time	Country	Event	Month	Previous	Consensus	Forecast
17-Feb-20	01:00:00	Japan	Reuters Tankan Index FEB			-6	-13
	01:50:00	Japan	GDP Growth Rate QoQ Prel	Q4	0.40%	-0.90%	-0.90%
	01:50:00	Japan	GDP Growth Annualized Prel	Q4	1.80%	-3.70%	1.50%
	01:50:00	Japan	GDP Capital Expenditure QoQ Prel	Q4	1.80%	-1.60%	
	01:50:00	Japan	GDP External Demand QoQ Prel	Q4	-0.20%	0.30%	
	01:50:00	Japan	GDP Private Consumption QoQ Prel	Q4	0.50%	-2.00%	
	01:50:00	Japan	GDP Price Index YoY Prel	Q4	0.60%		
	03:30:00	China	House Price Index YoY	Jan'20	6.60%		6.50%
	06:30:00	Japan	Capacity Utilization MoM	Dec'19	-0.30%	0.20%	0.20%
	06:30:00	Japan	Industrial Production YoY Final	Dec'19	-8.20%	-3.00%	-3.00%
	12:00:00	EU	Construction Output YoY	Dec'19	1.40%	1.40%	-1.20%
		EU	Eurogroup Meeting				
18-Feb-20	11:30:00	UK	Claimant Count Change	Jan'20	14.9K	22.6K	15K
	11:30:00	UK	Unemployment Rate	Dec'19	3.80%	3.80%	3.70%
	11:30:00	UK	Employment Change NOV		208K		120K
	11:30:00	UK	Labour Productivity QoQ Prel	Q4	0.40%		0.20%
	12:00:00	EU	ZEW Economic Sentiment Index FEB		25.6	30	22
	12:40:00	Germany	2-Year Schatz Auction		-0.58%		
	15:30:00	US	NY Empire State Manufacturing Index FEB		4.8	4.5	4
	17:00:00	US	NAHB Housing Market Index FEB		75	74	75
	18:30:00	US	6-Month Bill Auction		1.51%		
	18:30:00	US	3-Month Bill Auction		1.55%		
	23:00:00	US	Overall Net Capital Flows	Dec'19	\$73.1B	\$-0.4B	\$-94.1B
	23:00:00	US	Net Long-Term TIC Flows	Dec'19	\$22.9B	\$25.5B	
	23:00:00	US	Foreign Bond Investment	Dec'19	\$-41.5B		
19-Feb-20	01:50:00	Japan	Balance of Trade	Jan'20	¥-152.5B	¥-150B	¥-1240B
	01:50:00	Japan	Exports YoY		-6.30%	-7.10%	
	01:50:00	Japan	Machinery Orders YoY	Dec'19	5.30%	3.40%	0.30%
	01:50:00	Japan	Imports YoY	Jan'20	-4.90%	-15.80%	
	10:00:00	SA	Inflation Rate YoY	Jan'20	4.00%	4.40%	4.30%
	10:00:00	SA	Inflation Rate MoM	Jan'20	0.30%	0.30%	0.30%
	11:00:00	EU	Current Account		€36.6B	€42.4B	€29.5B
	11:30:00	UK	Inflation Rate YoY	Jan'20	1.30%	1.30%	1.30%
	11:30:00	UK	Core Inflation Rate YoY	Jan'20	1.40%	1.50%	1.30%
	11:30:00	UK	PPI Input YoY	Jan'20	-0.10%		
	11:30:00	UK	PPI Output YoY	Jan'20	0.90%		1.10%
	11:30:00	UK	Retail Price Index YoY	Jan'20	2.20%	1.90%	1.80%
	12:40:00	Germany	30-Year Bund Auction		0.31%		
	14:00:00	US	MBA 30-Year Mortgage Rate 14/FEB		3.72%		
	14:00:00	US	MBA Mortgage Applications 14/FEB		1.10%		
	15:30:00	US	PPI MoM	Jan'20	0.10%	0.20%	0.20%
	15:30:00	US	Housing Starts MoM	Jan'20	16.90%	-30.70%	-11.70%
	15:30:00	US	Building Permits MoM	Jan'20	-3.70%	-0.10%	2.20%
	15:30:00	US	Building Permits	Jan'20	1,420M	1,45M	1,451M
	15:30:00	US	Housing Starts	Jan'20	1,608M	1,39M	1,420M
	15:30:00	US	PPI YoY	Jan'20	1.30%	1.40%	1.70%
	15:55:00	US	Redbook MoM 15/FEB		-0.70%		
	15:55:00	US	Redbook YoY 15/FEB				
	21:00:00	US	FOMC Minutes				
20-Feb-20	01:50:00	Japan	Foreign Bond Investment 15/FEB		¥1633.8B		
	01:50:00	Japan	Stock Investment by Foreigners 15/FEB		¥282.9B		
	03:30:00	China	Loan Prime Rate 1Y		4.15%		3.95%
	03:30:00	China	Loan Prime Rate 5Y FEB		4.80%		4.65%
	09:00:00	Germany	GfK Consumer Confidence MAR		9.9	9.8	9.4
	09:00:00	Germany	PPI YoY	Jan'20	-0.20%	-0.20%	-0.10%
	11:30:00	UK	Retail Sales YoY	Jan'20	0.90%	1.00%	4.00%
	13:00:00	SA	Building Permits YoY		-32.50%		10.00%
	13:00:00	UK	CBI Industrial Trends Orders FEB		-22	-23	-14
	15:30:00	US	Philadelphia Fed Manufacturing Index FEB		17	10	12
	15:30:00	US	Initial Jobless Claims 15/FEB		205K		217K
	15:30:00	US	Continuing Jobless Claims 08/FEB		1698K		1705K
	17:00:00	EU	Consumer Confidence Flash FEB		-8.1	-8	-8
	17:30:00	US	EIA Natural Gas Stocks Change 14/FEB		-115Bcf		
	18:00:00	US	EIA Crude Oil Stocks Change 14/FEB		7,459M	-1,648M	
	18:00:00	US	EIA Gasoline Stocks Change 14/FEB		-0.095M		
	18:00:00	US	EIA Crude Oil Imports Change 14/FEB		0.806M		
	18:00:00	US	EIA Cushing Crude Oil Stocks Change 14/FEB		1.668M		
	18:00:00	US	EIA Refinery Crude Runs Change 14/FEB		0.048M		
	18:30:00	US	4-Week Bill Auction		1.56%		
	18:30:00	US	8-Week Bill Auction		1.57%		
21-Feb-20	01:30:00	Japan	Inflation Rate YoY	Jan'20	0.80%	0.70%	0.70%
	01:30:00	Japan	Inflation Rate Ex-Food and Energy YoY	Jan'20	0.90%	0.90%	
	06:30:00	Japan	All Industry Activity Index MoM		0.90%		-0.60%
	10:30:00	Germany	Markit Manufacturing PMI Flash FEB		45.3	44.8	46
	11:00:00	EU	Markit Manufacturing PMI Flash FEB		47.9	47.5	48.6
	11:30:00	UK	Public Sector Net Borrowing		£-4.04B		£11.9B
	12:00:00	EU	Inflation Rate YoY Final		1.30%	1.40%	1.40%
	12:00:00	EU	Inflation Rate MoM		0.30%		-1.10%
	16:45:00	US	Markit Manufacturing PMI Flash FEB		51.9		50.2
	17:00:00	US	Existing Home Sales MoM		3.60%		-2.20%
	17:00:00	US	Existing Home Sales		5.54M	5.41M	5.42M
	20:00:00	US	Baker Hughes Oil Rig Count 21/FEB				
	20:00:00	US	Baker Hughes Total Rig Count 21/FEB				

Major Central Banks Rate Decisions			
Central Bank	Next Meeting	Last Change	Current Interest Rate
European Central Bank	12-Mar-20	10-Mar-16	0.00%
Bank of Japan	19-Mar-20	29-Jan-16	-0.10%
Bank of England	26-Mar-20	02-Aug-18	0.75%
Federal Reserve	18-Mar-20	30-Oct-19	1.75%
SARB	19-Mar-20	16-Jan-20	6.25%