

SA MONEY MARKET REPORT

15 November 2019

THE PREVIOUS WEEK IN REVIEW

1. MONEY MARKET INTEREST RATES

SPOT RATES	04-Nov	08-Nov	15-Nov	Change
Repo Rate	6.50%	6.50%	6.50%	0.00%
Treasury Bill 91 days(D)	6.97%	6.98%	7.02%	0.04%
Treasury Bill 91 days(Y)	7.09%	7.10%	7.14%	0.04%
Treasury Bill 182days(D)	7.15%	7.10%	7.15%	0.05%
Treasury Bill 182days(Y)	7.41%	7.36%	7.41%	0.05%
Treasury Bill 273days(D)	7.15%	7.13%	7.15%	0.02%
Treasury Bill 273days(Y)	7.56%	7.53%	7.55%	0.02%
Treasury Bill 364days(Y)	7.63%	7.60%	7.61%	0.01%
3 Month NCD	6.73%	6.73%	6.75%	0.03%
6 Month NCD	7.23%	7.20%	7.15%	-0.05%
9 Month NCD	7.43%	7.38%	7.40%	0.03%
12 Month NCD	7.68%	7.65%	7.68%	0.03%
18 Month NCD (YTM)	7.57%	7.55%	7.53%	-0.02%
24 Month NCD (YTM)	7.62%	7.60%	7.58%	-0.02%
36 Month NCD (YTM)	7.82%	7.81%	7.73%	-0.08%
R208 (YTM)	6.64%	6.63%	6.65%	0.025%

MONEY MARKET RATES (NACQ)	04-Nov	08-Nov	15-Nov	Change
3 Month NCD	6.73%	6.73%	6.75%	0.03%
6 Month NCD	7.04%	7.01%	6.97%	-0.05%
9 Month NCD	7.23%	7.18%	7.20%	0.02%
12 Month NCD	7.46%	7.44%	7.46%	0.02%
18 Month NCD	7.36%	7.35%	7.33%	-0.02%
24 Month NCD	7.41%	7.39%	7.37%	-0.02%
36 Month NCD	7.60%	7.59%	7.52%	-0.08%
R 208	6.64%	6.63%	6.65%	0.025%

MONEY MARKET LIQUIDITY	04-Nov	08-Nov	15-Nov	Change
Shortage (Rm)	56000	56000	56000	0
Notes (Rm)	156034	151283	143488	-7795
Reverse Repo (Rm)	0	0	0	0
Debentures (Rm)	100	70	80	10
Liquidity Requirements (Rm)	58248	56096	55675	-421

2. JIBAR RATES (Nominal Terms)

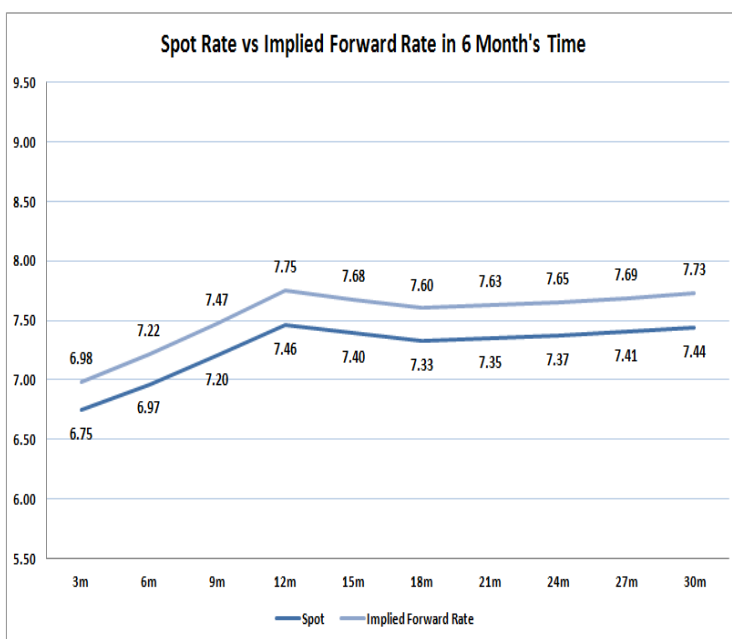
JIBAR (Nominal Terms)	04-Nov	08-Nov	15-Nov	Change
1 Month	6.63%	6.62%	6.63%	0.01%
3 Month	6.79%	6.80%	6.80%	0.00%
6 Month	7.26%	7.25%	7.27%	0.02%
9 Month	7.44%	7.45%	7.48%	0.03%
12 Month	7.71%	7.70%	7.75%	0.05%

3. CURRENT AND FUTURE YIELD CURVES (NACQ)

In the graph below the implied forward rates in six months' time are plotted opposite the current spot rates for the corresponding number of months. The implied forward rates are derived from a break-even calculation approach.

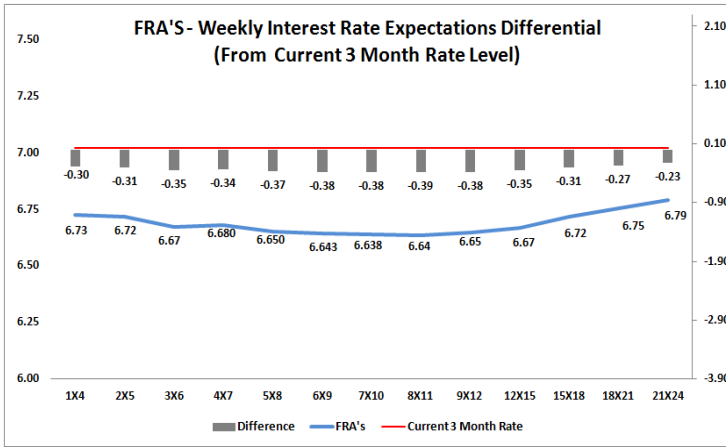
The rates represented in the line graphs below are in NACQ terms.

According to the break-even (forward/forward) calculation, the 12 and 18-month interest rates will be 7.75% and 7.60% respectively in six months time.



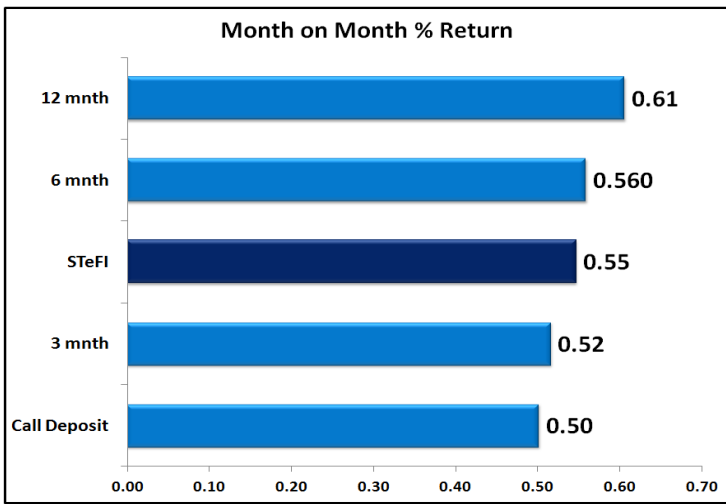
4. FRA RATES (NACQ)

FRA's	04-Nov	08-Nov	15-Nov	Change
1x4	6.75%	6.71%	6.73%	0.01%
3x6	6.72%	6.66%	6.67%	0.01%
6x9	6.69%	6.63%	6.64%	0.01%
9x12	6.69%	6.64%	6.65%	0.01%
12x15	6.70%	6.66%	6.67%	0.00%
15x18	6.75%	6.71%	6.72%	0.01%
18x21	6.79%	6.75%	6.75%	0.00%
21x24	6.84%	6.80%	6.79%	-0.01%
24x27	6.88%	6.84%	6.83%	-0.01%
27x30	6.93%	6.89%	6.87%	-0.02%

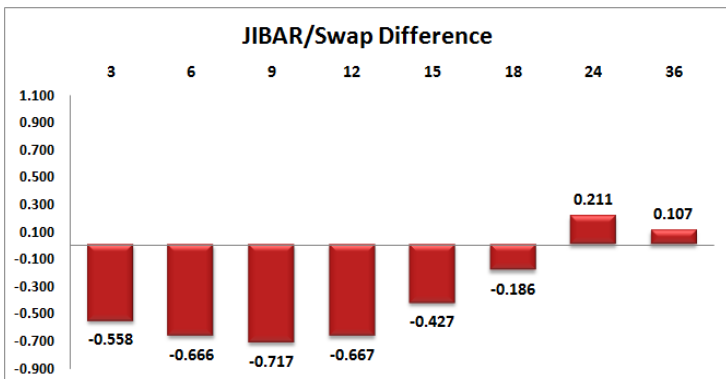
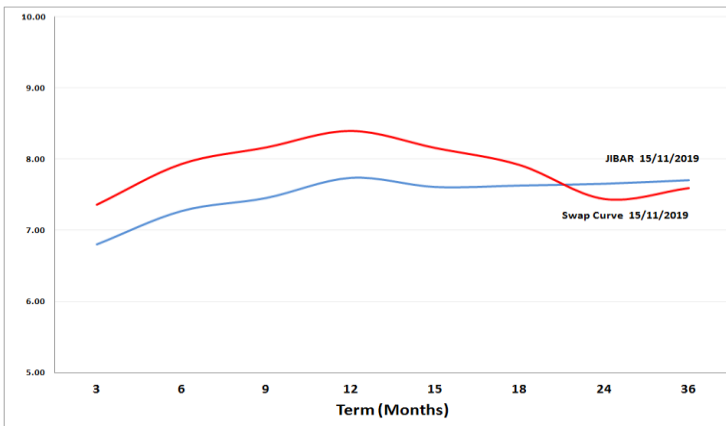


5. MONEY MARKET PERFORMANCE

STeFI (Month on Month) gained 0.55% with the best return 0.61% in the 12-Month area.



6. JIBAR and SWAPS - Curve



7. SARB AND NATIONAL TREASURY OPERATIONS

SARB DEBENTURES			
	Received	Allotted	Av. Rate
7 Days	80	80	6.500%
14 Days	0	0	0.000%
28 Days	0	0	0.000%
56 Days	0	0	0.000%

LONG TERM REVERSE REPO			
14Days			
	Allotted	Av. Rate	

56 Days			
	Allotted	Av. Rate	

TREASURY BILLS			
	Received	Allotted	Av. Rate
91 Days	R3650m	R2400m	7.14%
182 Days	R2836m	R1735.9m	7.41%
273 Days	R5036m	R2950m	7.55%

8. THE WEEK AHEAD

Date	Time	Country	Event	Month	Previous	Consensus	Forecast
18-Nov-19	17:00:00	US	NAHB Housing Market Index	Nov'19	71	71	69
	18:30:00	US	6-Month Bill Auction		1.55%		
	18:30:00	US	3-Month Bill Auction		1.57%		
	23:00:00	US	Foreign Bond Investment	Sept'19	\$-30.5B		
	23:00:00	US	Overall Net Capital Flows	Sept'19	\$70.5B	\$35.9B	
	23:00:00	US	Net Long-Term Tlc Flows	Sept'19	\$-41.1B	\$20.4B	
19-Nov-19	11:00:00	EU	Current Account	Sept'19	€25.7B	€23.4B	€21.5B
	12:00:00	EU	Construction Output YoY	Sept'19	2.20%	2.70%	2.00%
	13:00:00	UK	CBI Industrial Trends Orders		-37	-28	-26
	15:30:00	US	Housing Starts	Oct '19	1.256M	1.3M	1.320M
	15:30:00	US	Building Permits	Oct '19	1.387M	1.385M	
	15:30:00	US	Building Permits MoM	Oct '19	-2.70%	0.00%	
	15:30:00	US	Housing Starts MoM	Oct '19	-9.40%	0.60%	5.10%
	15:55:00	US	Redbook MoM 16/	Nov'19	0.10%		
	15:55:00	US	Redbook YoY 16/	Nov'19	5.00%		
	23:30:00	US	API Crude Oil Stock Change /15	Nov'19	-0.5M		
20-Nov-19	01:50:00	Japan	Balance of Trade	Oct '19	¥-123B	¥54B	¥0B
	01:50:00	Japan	Exports YoY	Oct '19	-5.20%	-4.00%	-3.20%
	01:50:00	Japan	Imports YoY	Oct '19	-1.50%	-2.80%	-4.60%
	03:30:00	China	Loan Prime Rate 1Y		4.2%		4.10%
	03:30:00	China	Loan Prime Rate 5Y		4.85%		4.80%
	09:00:00	Germany	PPI MoM	Oct '19	0.10%	-0.10%	-0.20%
	09:00:00	Germany	PPI YoY	Oct '19	-0.10%	-0.30%	-0.60%
	10:00:00	SA	Inflation Rate YoY	Oct '19	4.10%	3.90%	4.10%
	10:00:00	SA	Inflation Rate MoM	Oct '19	0.30%	0.20%	0.50%
	10:00:00	SA	Core Inflation Rate YoY	Oct '19	4.00%	4.00%	4.30%
	12:40:00	Germany	30-YEUR Bund Auction		0.07%		
	14:00:00	US	MBA Mortgage Applications 15/	Nov'19	9.60%		
	14:00:00	US	MBA 30-YEUR Mortgage Rate 15/	Nov'19	4.03%		
	17:30:00	US	EIA Crude Oil Stocks Change 15/	Nov'19	2.219M		
	17:30:00	US	EIA Gasoline Stocks Change 15/	Nov'19	1.861M		
	17:30:00	US	FOMC Minutes				
21-Nov-19	01:50:00	Japan	Foreign Bond Investment /16	Nov'19	¥528.8B		
	01:50:00	Japan	Stock Investment by Foreigners /16	Nov'19	¥569.5B		
	06:30:00	Japan	All Industry Activity Index MoM	Sept'19	0.00%	-0.20%	1.50%
	11:30:00	UK	Public Sector Net Borrowing	Oct '19	£-8.52B		£-7.7B
	13:00:00	SA	Building Permits YoY	Sept'19	-12.30%		-2.10%
	15:00:00	SA	Interest Rate decision		6.50%	6.50%	6.50%
	15:00:00	SA	Prime Overdraft Rate		10.00%		10.00%
	15:30:00	US	Philadelphia Fed Manufacturing Index	Nov'19	5.6	7.2	6.5
	15:30:00	US	Continuing Jobless Claims /09	Nov'19	1683K		1689K
	15:30:00	US	Initial Jobless Claims /16	Nov'19	225K		221K
	17:00:00	EU	Consumer Confidence Flash	Nov'19	7.6	-6.7	-7.2
	17:00:00	US	Existing Home Sales MoM	Oct '19	-2.20%	-0.70%	1.90%
	17:00:00	US	Existing Home Sales	Oct '19	5.38M	5.43M	5.48M
	17:00:00	US	CB LEUding Index MoM	Oct '19	-0.10%	-0.10%	0.10%
	17:30:00	US	EIA Natural Gas Stocks Change 15/	Nov'19	3Bcf		
	18:30:00	US	4-Week Bill Auction				
	18:30:00	US	8-Week Bill Auction				
22-Nov-19	01:30:00	Japan	Inflation Rate YoY	Oct '19	0.20%	0.30%	1.40%
	01:30:00	Japan	Core Inflation Rate YoY	Oct '19	0.30%	0.30%	1.70%
	01:30:00	Japan	Inflation Rate MoM	Oct '19	0.00%		1.50%
	01:30:00	Japan	Inflation Rate Ex-Food and Energy YoY	Oct '19	0.50%	0.50%	1.90%
	02:30:00	Japan	Jibun Bank Manufacturing PMI Flash	Nov'19	48.4		48
	02:30:00	Japan	Jibun Bank Services PMI Flash	Nov'19	50.3		50
	02:30:00	Japan	Jibun Bank Composite PMI Flash	Nov'19	49.8		49.4
	09:00:00	Germany	GDP Growth Rate QoQ Final Q3	Q3	-0.20%	0.10%	0.10%
	09:00:00	Germany	GDP Growth Rate YoY Final Q3	Q3	0.30%	0.50%	0.50%
	10:30:00	Germany	Markit Manufacturing PMI Flash	Nov'19	42.1	42	44.5
	10:30:00	Germany	Markit Services PMI Flash	Nov'19	51.6	52	52
	10:30:00	Germany	Markit Composite PMI Flash	Nov'19	48.9	48.8	49.4
	11:00:00	EU	Markit Manufacturing PMI Flash	Nov'19	45.9	46	47.2
	11:00:00	EU	Markit Services PMI Flash	Nov'19	52.2	51.9	52.6
	11:00:00	EU	Markit Composite PMI Flash	Nov'19	50.6	50.3	51
	16:45:00	US	Markit Composite PMI Flash	Nov'19	50.9	51.9	51.4
	16:45:00	US	Markit Manufacturing PMI Flash	Nov'19	51.3	50.7	51.7
	16:45:00	US	Markit Services PMI Flash	Nov'19	50.6	50.6	51.1
	17:00:00	US	Michigan Consumer Sentiment Final	Nov'19	95.5	95.7	95.7
	17:00:00	US	Michigan Inflation Expectations Final	Nov'19	2.50%		2.50%
	17:00:00	US	Michigan 5 YEUR Inflation Expectations Final	Nov'19	2.30%		2.40%
	17:00:00	US	Michigan Current Conditions Final	Nov'19	113.2		110.9
	17:00:00	US	Michigan Consumer Expectations Final	Nov'19	84.2		85.9
	18:00:00	US	Kansas Fed Manufacturing Index	Nov'19	8	9	10
	20:00:00	US	Baker Hughes Oil Rig Count 22/	Nov'19			
	17:00:00	US	Fed's Chair Powell testifies				
	17:30:00	US	EIA Natural Gas Storage Change (8)	Nov'19			34 B
	18:00:00	US	EIA Crude Oil Stocks Change (8)	Nov'19		7,929 M	
	18:30:00	US	4-Week Bill Auction				1.54%

Major Central Banks Rate Decisions			
Central Bank	Next Meeting	Last Change	Current Interest Rate
European Central Bank	12-Dec-19	10-Mar-16	0.00%
Bank of Japan	19-Dec-19	29-Jan-16	-0.10%
Bank of England	19-Dec-19	02-Aug-18	0.75%
Federal Reserve	11-Dec-19	30-Oct-19	1.75%
SARB	21-Nov-19	18-Jul-19	6.50%