

## SA MONEY MARKET REPORT

20 March 2020

### THE PREVIOUS WEEK IN REVIEW

#### 1. MONEY MARKET INTEREST RATES

SPOT RATES	06-Mar	13-Mar	20-Mar	Change
Repo Rate	6.25%	6.25%	5.25%	-1.00%
Treasury Bill 91 days(D)	6.28%	6.43%	5.76%	-0.67%
Treasury Bill 91 days(Y)	6.38%	6.54%	5.84%	-0.70%
Treasury Bill 182days(D)	6.51%	6.52%	6.02%	-0.50%
Treasury Bill 182days(Y)	6.73%	6.74%	6.20%	-0.54%
Treasury Bill 273days(D)	6.43%	6.41%	5.94%	-0.47%
Treasury Bill 273days(Y)	6.75%	6.73%	6.21%	-0.52%
Treasury Bill 364days(Y)	6.59%	6.69%	6.28%	-0.41%
3 Month NCD	6.45%	6.35%	5.53%	-0.83%
6 Month NCD	6.75%	6.68%	5.93%	-0.75%
9 Month NCD	6.83%	6.78%	6.05%	-0.73%
12 Month NCD	6.98%	6.85%	6.25%	-0.60%
18 Month NCD (YTM)	6.85%	6.77%	6.32%	-0.45%
24 Month NCD (YTM)	6.88%	6.89%	6.45%	-0.44%
36 Month NCD (YTM)	7.07%	7.21%	7.16%	-0.05%
R208 (YTM)	6.03%	5.98%	6.00%	0.020%

MONEY MARKET RATES (NACQ)	06-Mar	13-Mar	20-Mar	Change
3 Month NCD	6.45%	6.35%	5.53%	-0.83%
6 Month NCD	6.59%	6.51%	5.80%	-0.72%
9 Month NCD	6.66%	6.61%	5.92%	-0.69%
12 Month NCD	6.80%	6.68%	6.11%	-0.57%
18 Month NCD	6.68%	6.60%	6.18%	-0.43%
24 Month NCD	6.71%	6.72%	6.30%	-0.42%
36 Month NCD	6.89%	7.02%	6.97%	-0.05%
R 208	6.03%	5.98%	6.00%	0.020%

MONEY MARKET LIQUIDITY	06-Mar	13-Mar	20-Mar	Change
Shortage (Rm)	56000	56000	56000	0
Notes (Rm)	148648	141762	137120	-4642
Reverse Repo (Rm)	0	0	0	0
Debentures (Rm)	7	7	0	-7
Liquidity Requirements (Rm)	56778	56854	54912	-1942

#### 2. JIBAR RATES (Nominal Terms)

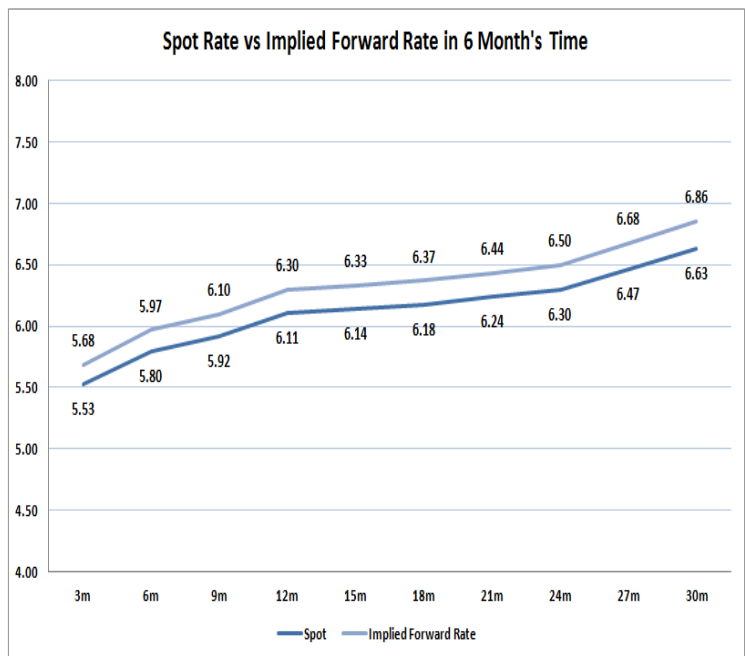
JIBAR (Nominal Terms)	06-Mar	13-Mar	20-Mar	Change
1 Month	6.32%	6.27%	6.23%	-0.03%
3 Month	6.49%	6.41%	6.34%	-0.07%
6 Month	6.81%	6.75%	6.58%	-0.17%
9 Month	6.89%	6.83%	6.64%	-0.19%
12 Month	7.04%	6.96%	6.78%	-0.18%

#### 3. CURRENT AND FUTURE YIELD CURVES (NACQ)

In the graph below the implied forward rates in six months' time are plotted opposite the current spot rates for the corresponding number of months. The implied forward rates are derived from a break-even calculation approach.

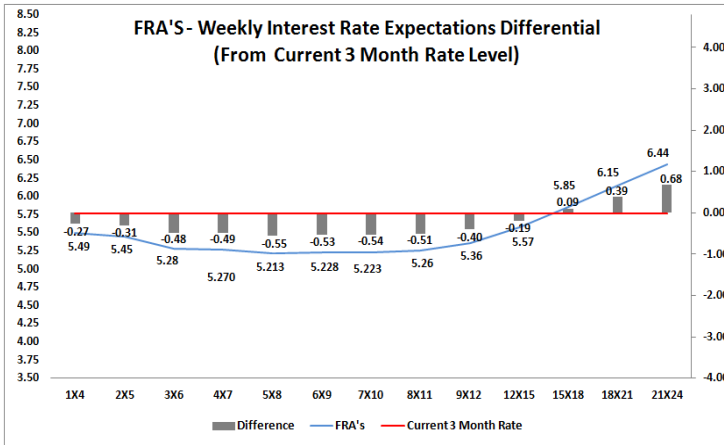
The rates represented in the line graphs below are in NACQ terms.

According to the break-even (forward/forward) calculation, the 12 and 18-month interest rates will be 6.30% and 6.37% respectively in six months time.



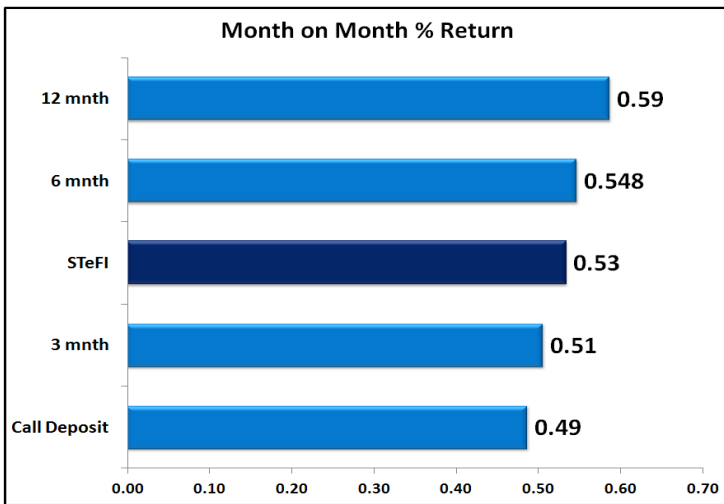
#### 4. FRA RATES (NACQ)

FRA's	06-Mar	13-Mar	20-Mar	Change
1x4	6.31%	6.15%	5.49%	-0.66%
3x6	6.13%	6.00%	5.28%	-0.72%
6x9	5.99%	5.92%	5.23%	-0.69%
9x12	5.87%	5.92%	5.36%	-0.57%
12x15	5.85%	6.03%	5.57%	-0.46%
15x18	5.91%	6.17%	5.85%	-0.31%
18x21	5.97%	6.28%	6.15%	-0.13%
21x24	6.03%	6.39%	6.44%	0.06%
24x27	6.08%	6.50%	6.74%	0.24%
27x30	6.14%	6.61%	7.03%	0.43%

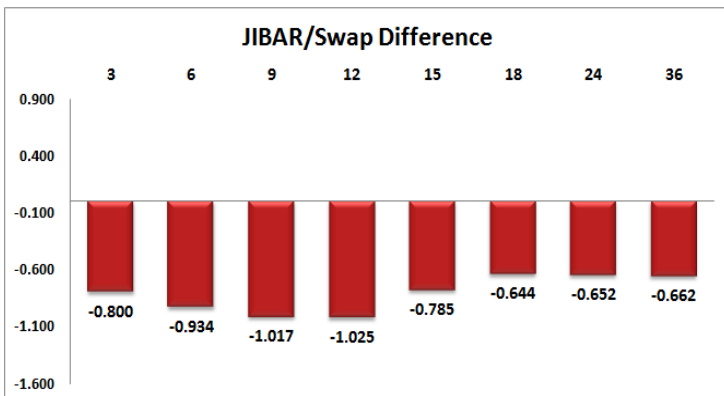
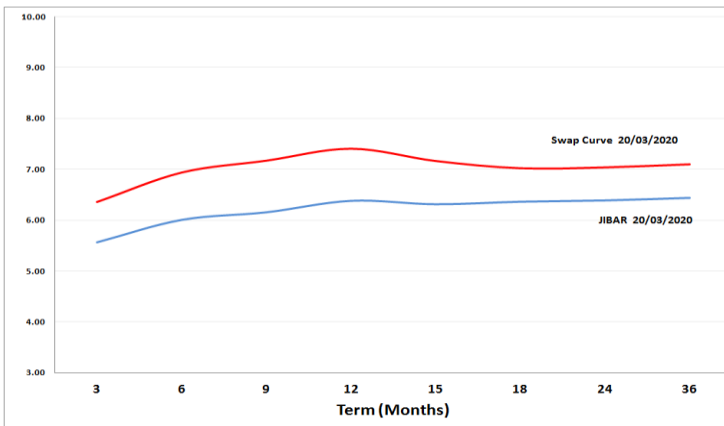


## 5. MONEY MARKET PERFORMANCE

STeFI (Month on Month) gained 0.53% with the best return 0.59% in the 12-Month area.



## 6. JIBAR and SWAPS - Curve



## 7. SARB AND NATIONAL TREASURY OPERATIONS

SARB DEBENTURES			
	Received	Allotted	Av. Rate
7 Days	0	0	0.000%
14 Days	0	0	0.000%
28 Days	0	0	0.000%
56 Days	0	0	0.000%

LONG TERM REVERSE REPO			
14Days			
	Allotted	Av. Rate	

TREASURY BILLS			
	Received	Allotted	Av. Rate
91 Days	R1817m	R1000m	5.84%
182 Days	R3746m	R2055m	6.20%
273 Days	R5550m	R2370m	6.21%

## 8. THE WEEK AHEAD

Date	Time	Country	Event	Month	Previous	Consensus	Forecast
23-Mar-20	09:00:00	Germany	Import Prices MoM	Feb'20	-0.40%		
	09:00:00	Germany	Import Prices YoY	Feb'20	-0.90%		
	14:30:00	US	Chicago Fed National Activity Index	Feb'20	-0.25		-0.4
	17:00:00	EU	Consumer Confidence Flash MAR		-6.6	-6.5	-10
	17:30:00	US	6-Month Bill Auction				
	17:30:00	US	3-Month Bill Auction				
24-Mar-20	02:30:00	Japan	Jibun Bank Manufacturing PMI Flash MAR		47.8		45
	07:00:00	Japan	Coincident Index Final	Jan'20	94.4	94.7	94.7
	07:00:00	Japan	Leading Economic Index Final	Jan'20	91	90.3	90.3
	09:00:00	SA	Leading Business Cycle Indicator MoM	Jan'20	-0.30%		-0.50%
	11:30:00	UK	BoE FPC Statement				
	12:40:00	Germany	2-Year Schatz Auction		-0.66%		
	14:55:00	US	Redbook YoY 21/MAR		8.50%		
	14:55:00	US	Redbook MoM 21/MAR		1.10%		
	16:00:00	US	New Home Sales MoM		7.90%	3.70%	-3.70%
	16:00:00	US	New Home Sales		0.764M	0.75M	0.736M
	16:00:00	US	Richmond Fed Manufacturing Index MAR		-2	9	-16
	17:30:00	US	52-Week Bill Auction		1.27%		
	19:00:00	US	2-Year Note Auction		1.19%		
	22:30:00	US	API Crude Oil Stock Change 20/MAR		-0.421M		
25-Mar-20	01:50:00	Japan	BoJ Monetary Policy Meeting Minutes				
	11:00:00	Germany	Ifo Business Climate Final MAR		96	88	87.7
	11:00:00	Germany	Ifo Expectations Final MAR		93.2	93.1	82
	11:00:00	Germany	Ifo Current Conditions Final MAR		99	99.1	93.8
	11:30:00	UK	Inflation Rate YoY	Feb'20	1.80%	1.80%	1.50%
	11:30:00	UK	Inflation Rate MoM	Feb'20	-0.30%		0.20%
	11:30:00	UK	PPI Output MoM	Feb'20	0.30%	0.00%	
	11:30:00	UK	PPI Input MoM	Feb'20	0.90%	0.20%	
	11:30:00	UK	PPI Output YoY	Feb'20	1.10%		1.20%
	11:30:00	UK	PPI Input YoY	Feb'20	2.10%		
	11:30:00	UK	Retail Price Index YoY	Feb'20	2.70%	2.40%	2.40%
	11:30:00	UK	Retail Price Index MoM	Feb'20	-0.40%	0.60%	
	13:00:00	UK	CBI Distributive Trades MAR		1		-18
	13:00:00	US	MBA Mortgage Applications 20/MAR		-8.40%		
	13:00:00	US	MBA 30-Year Mortgage Rate 20/MAR		3.74%		
	14:30:00	US	Durable Goods Orders MoM		-0.20%	-0.90%	-0.70%
	14:30:00	US	Durable Goods Orders Ex Transp MoM	Feb'20	0.90%	-0.20%	-0.10%
	14:30:00	US	Durable Goods Orders ex Defense MoM	Feb'20	3.60%		-2.70%
	15:00:00	US	House Price Index MoM		0.60%	0.20%	
26-Mar-20	01:50:00	Japan	Foreign Bond Investment 21/MAR		Y-595.1B		
	01:50:00	Japan	Stock Investment by Foreigners 21/MAR		Y-1242.9B		
	09:00:00	Germany	GfK Consumer Confidence APR		9.8	9.8	8.9
	11:00:00	EU	Loans to Households YoY	Feb'20	3.70%		3.60%
	11:00:00	EU	Loans to Companies YoY	Feb'20	3.20%		3.10%
	11:00:00	EU	M3 Money Supply YoY	Feb'20	5.20%		5.10%
	11:30:00	SA	PPI MoM	Feb'20	0.30%	0.20%	0.30%
	11:30:00	SA	PPI YoY	Feb'20	4.60%	4.40%	4.40%
	11:30:00	UK	Retail Sales YoY	Feb'20	0.80%	0.70%	2.90%
	14:00:00	UK	BoE Interest Rate Decision		0.10%	0.10%	
	14:00:00	UK	BoE Quantitative Easing		£645B		£645B
	14:00:00	UK	MPC Meeting Minutes				
	14:00:00	UK	BoE MPC Vote Hike				
	14:00:00	UK	BoE MPC Vote Unchanged				
	14:00:00	UK	BoE MPC Vote Cut				
	14:30:00	US	GDP Growth Rate QoQ Final Q4		2.10%	2.10%	2.10%
	14:30:00	US	Corporate Profits QoQ Q4		0.60%		
	14:30:00	US	GDP Price Index QoQ Final Q4		1.80%	1.30%	1.30%
	14:30:00	US	Goods Trade Balance Adv	Feb'20	-\$65.5B		-\$68.9B
	14:30:00	US	Wholesale Inventories MoM Adv	Feb'20	-0.40%	0.60%	0.60%
	14:30:00	US	Initial Jobless Claims 21/MAR		281K		299K
	14:30:00	US	Continuing Jobless Claims 14/MAR		1701K		1730K
	14:30:00	US	PCE Prices QoQ Final Q4		1.50%		1.30%
	14:30:00	US	Core PCE Prices QoQ Final Q4		2.10%		1.20%
	16:30:00	US	EIA Natural Gas Stocks Change 20/MAR		-9Bcf		
	17:00:00	US	Kansas Fed Manufacturing Index MAR		8		2
	17:30:00	US	4-Week Bill Auction		0.03%		
	17:30:00	US	8-Week Bill Auction		0.03%		
	19:00:00	US	7-Year Note Auction		1.25%		
27-Mar-20	01:30:00	Japan	Tokyo Core CPI YoY MAR		0.50%	0.60%	0.40%
	01:30:00	Japan	Tokyo CPI YoY MAR		0.40%		0.30%
	03:30:00	CN	Industrial Profits (YTD) YoY	Feb'20	-3.30%		-8.00%
	09:00:00	UK	Nationwide Housing Prices YoY MAR		2.30%		
	09:00:00	UK	Nationwide Housing Prices MoM MAR		0.30%		
	10:00:00	UK	Car Production YoY	Feb'20	-2.10%		
	14:30:00	US	Personal Income MoM	Feb'20	0.60%	0.30%	0.30%
	14:30:00	US	Personal Spending MoM	Feb'20	0.20%	0.30%	0.30%
	14:30:00	US	PCE Price Index MoM	Feb'20	0.10%		0.20%
	14:30:00	US	PCE Price Index YoY	Feb'20	1.70%		1.80%
	14:30:00	US	Core PCE Price Index MoM	Feb'20	0.10%		0.20%
	14:30:00	US	Core PCE Price Index YoY	Feb'20	1.60%		1.80%

Major Central Banks Rate Decisions			
Central Bank	Next Meeting	Last Change	Current Interest Rate
European Central Bank	30-Apr-20	10-Mar-16	0.00%
Bank of Japan	28-Apr-20	29-Jan-16	-0.10%
Bank of England	26-Mar-20	19-Mar-20	0.10%
Federal Reserve	29-Apr-20	15-Mar-20	1.25%
SARB	21-May-20	19-Mar-20	5.25%