

SA MONEY MARKET REPORT

22 March 2019

THE PREVIOUS WEEK IN REVIEW

1. MONEY MARKET INTEREST RATES

| SPOT RATES | 08-Mar | 15-Mar | 22-Mar | Change |
|--------------------------|--------|--------|--------|---------|
| Repo Rate | 6.75% | 6.75% | 6.75% | 0.00% |
| Treasury Bill 91 days(D) | 7.05% | 7.02% | 7.00% | -0.02% |
| Treasury Bill 91 days(Y) | 7.18% | 7.14% | 7.12% | -0.02% |
| Treasury Bill 182days(D) | 7.32% | 7.28% | 7.24% | -0.04% |
| Treasury Bill 182days(Y) | 7.60% | 7.55% | 7.51% | -0.04% |
| Treasury Bill 273days(D) | 7.27% | 7.23% | 7.20% | -0.03% |
| Treasury Bill 273days(Y) | 7.68% | 7.65% | 7.61% | -0.04% |
| Treasury Bill 364days(Y) | 7.72% | 7.72% | 7.75% | 0.03% |
| 3 Month NCD | 7.10% | 7.10% | 7.10% | 0.00% |
| 6 Month NCD | 7.63% | 7.65% | 7.65% | 0.00% |
| 9 Month NCD | 7.88% | 7.90% | 7.88% | -0.03% |
| 12 Month NCD | 8.18% | 8.20% | 8.18% | -0.02% |
| 18 Month NCD (YTM) | 8.04% | 8.06% | 8.01% | -0.04% |
| 24 Month NCD (YTM) | 8.08% | 8.11% | 8.05% | -0.06% |
| 36 Month NCD (YTM) | 8.21% | 8.26% | 8.20% | -0.06% |
| R207 (YTM) | 6.55% | 6.73% | 6.58% | -0.150% |

| MONEY MARKET RATES (NACQ) | 08-Mar | 15-Mar | 22-Mar | Change |
|---------------------------|--------|--------|--------|---------|
| 3 Month NCD | 7.10% | 7.10% | 7.10% | 0.00% |
| 6 Month NCD | 7.42% | 7.44% | 7.44% | 0.00% |
| 9 Month NCD | 7.65% | 7.68% | 7.65% | -0.02% |
| 12 Month NCD | 7.94% | 7.96% | 7.94% | -0.02% |
| 18 Month NCD | 7.80% | 7.82% | 7.78% | -0.04% |
| 24 Month NCD | 7.84% | 7.87% | 7.82% | -0.05% |
| 36 Month NCD | 7.96% | 8.01% | 7.96% | -0.05% |
| R 207 | 6.55% | 6.73% | 6.58% | -0.150% |

| MONEY MARKET LIQUIDITY | 08-Mar | 15-Mar | 22-Mar | Change |
|-----------------------------|--------|--------|--------|--------|
| Shortage (Rm) | 56000 | 56000 | 56000 | 0 |
| Notes (Rm) | 145401 | 137803 | 137297 | -506 |
| Reverse Repo (Rm) | 0 | 0 | 0 | 0 |
| Debentures (Rm) | 1000 | 120 | 75 | -45 |
| Liquidity Requirements (Rm) | 57320 | 56379 | 54224 | -2155 |

2. JIBAR RATES (Nominal Terms)

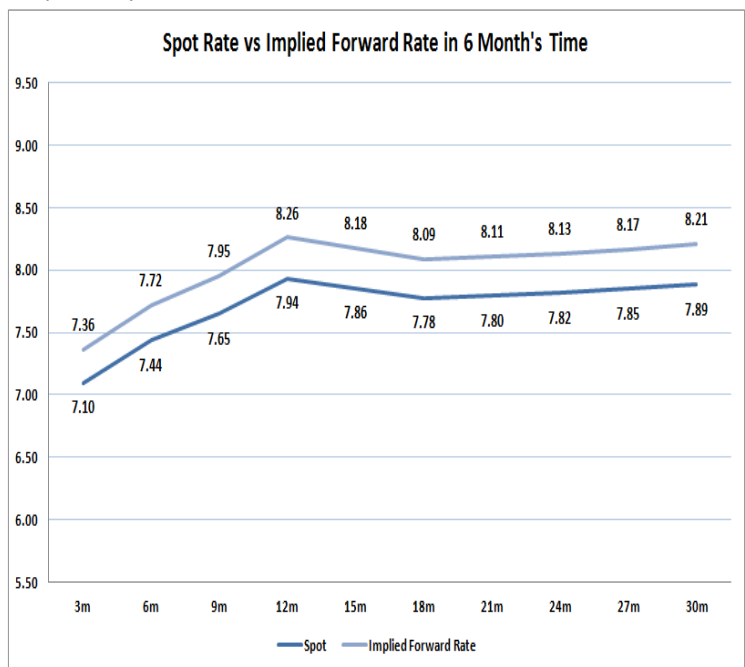
| JIBAR (Nominal Terms) | 08-Mar | 15-Mar | 22-Mar | Change |
|-----------------------|--------|--------|--------|--------|
| 1 Month | 6.98% | 6.98% | 6.98% | 0.00% |
| 3 Month | 7.15% | 7.15% | 7.15% | 0.00% |
| 6 Month | 7.73% | 7.73% | 7.73% | 0.00% |
| 9 Month | 7.93% | 7.94% | 7.93% | -0.01% |
| 12 Month | 8.23% | 8.24% | 8.25% | 0.01% |

3. CURRENT AND FUTURE YIELD CURVES (NACQ)

In the graph below the implied forward rates in six months' time are plotted opposite the current spot rates for the corresponding number of months. The implied forward rates are derived from a break-even calculation approach.

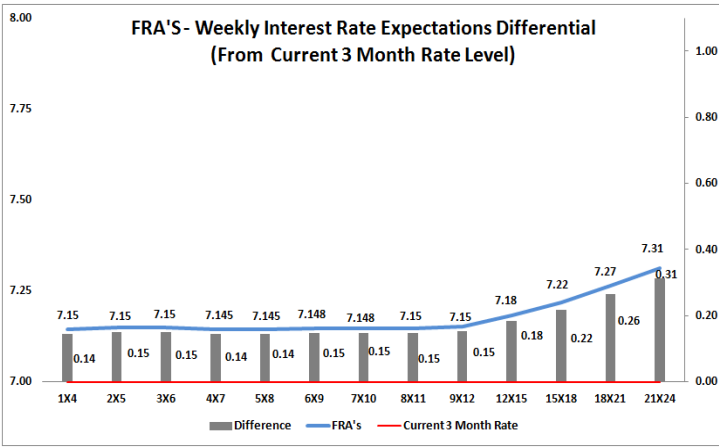
The rates represented in the line graphs below are in NACQ terms.

According to the break-even (forward/forward) calculation, the 12 and 18-month interest rates will be 8.26% and 8.09% respectively in six months time.



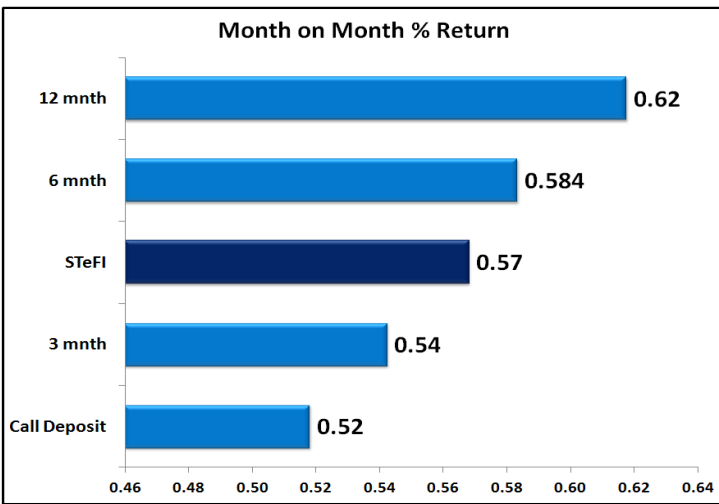
4. FRA RATES (NACQ)

| FRA's | 08-Mar | 15-Mar | 22-Mar | Change |
|-------|--------|--------|--------|--------|
| 1x4 | 7.14% | 7.15% | 7.15% | 0.00% |
| 3x6 | 7.13% | 7.15% | 7.15% | 0.00% |
| 6x9 | 7.12% | 7.16% | 7.15% | -0.01% |
| 9x12 | 7.12% | 7.17% | 7.15% | -0.02% |
| 12x15 | 7.12% | 7.19% | 7.18% | -0.01% |
| 15x18 | 7.17% | 7.23% | 7.22% | -0.01% |
| 18x21 | 7.20% | 7.26% | 7.27% | 0.01% |
| 21x24 | 7.23% | 7.28% | 7.31% | 0.03% |
| 24x27 | 7.25% | 7.31% | 7.36% | 0.05% |
| 27x30 | 7.28% | 7.33% | 7.41% | 0.08% |

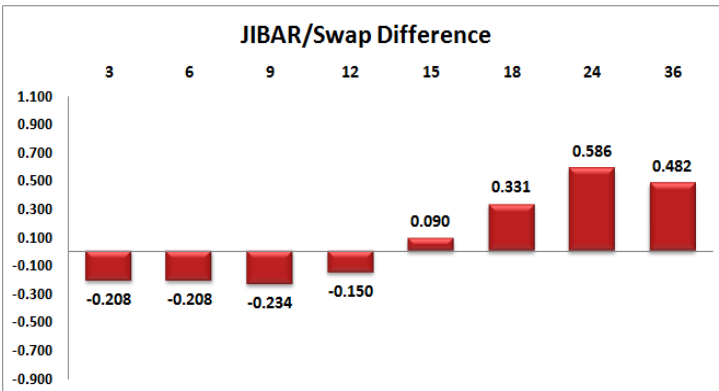
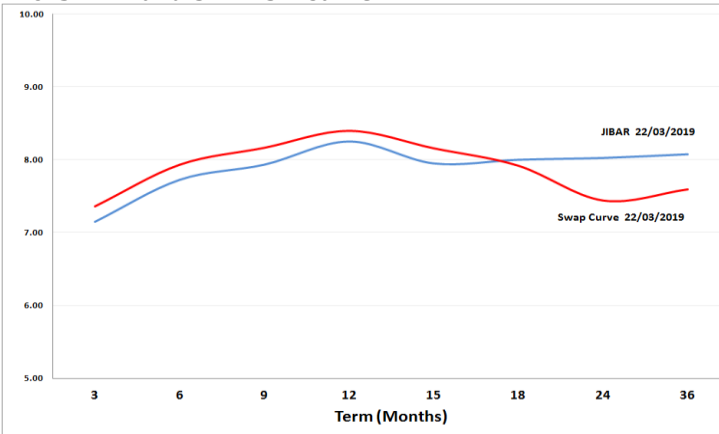


5. MONEY MARKET PERFORMANCE

STeFI (Month on Month) gained 0.57% with the best return 0.62% in the 12-Month area.



6. JIBAR and SWAPS - Curve



7. SARB AND NATIONAL TREASURY OPERATIONS

| SARB DEBENTURES | | | |
|------------------------|----------|----------|----------|
| | Received | Allotted | Av. Rate |
| 7 Days | 75 | 75 | 6.740% |
| 14 Days | 0 | 0 | 0.000% |
| 28 Days | 0 | 0 | 0.000% |
| 56 Days | 0 | 0 | 0.000% |
| LONG TERM REVERSE REPO | | | |
| 14Days | | | |
| | Allotted | Av. Rate | |
| | | | |
| 56 Days | | | |
| | Allotted | Av. Rate | |
| | | | |
| TREASURY BILLS | | | |
| | Received | Allotted | Av. Rate |
| 91 Days | R3445m | R1000m | 7.12% |
| 182 Days | R8917m | R2125m | 7.51% |
| 273 Days | R7274m | R2395m | 7.61% |

8. THE WEEK AHEAD

| Date | Time | Country | Event | Month | Previous | Forecast |
|-----------|----------|---------|---|------------|----------|----------|
| 25-Mar-19 | 03:45:00 | US | Fed's Evans speech | | | |
| | 06:30:00 | Japan | All Industry Activity Index (MoM) | Feb'19 | -0.40% | 0.20% |
| | 11:00:00 | Germany | IFO - Business Climate | | 98.5 | 98.7 |
| | 12:00:00 | US | Fed's Harker speech | | | |
| | 14:30:00 | US | Chicago Fed National Activity Index | | -0.43 | |
| | 16:30:00 | US | Dallas Fed Manufacturing Business Index | | 13.1 | 7 |
| | 18:30:00 | US | 3-Month Bill Auction | | 2.41% | |
| | 18:30:00 | US | 6-Month Bill Auction | | 2.45% | |
| | 01:50:00 | Japan | Corporate Service Price (YoY) | Feb'19 | 1.10% | |
| | 01:50:00 | Japan | BoJ Summary of Opinions | | | |
| 26-Mar-19 | 02:30:00 | US | Fed's Rosengren speech | | | |
| | 09:00:00 | Germany | GfK Consumer Confidence Survey | | 10.8 | 11 |
| | 11:30:00 | UK | BBA Mortgage Approvals | Feb'19 | 40.634K | |
| | 14:30:00 | US | Building Permits Change | Feb'19 | -1.76% | |
| | 14:30:00 | US | Housing Starts Change | Feb'19 | 18.60% | |
| | 14:30:00 | US | Housing Starts (MoM) | Feb'19 | 1.23M | 1.235M |
| | 14:55:00 | US | Redbook Index (YoY) | | 4.90% | |
| | 15:00:00 | US | S&P Case-Shiller Home Price Indices (YoY) | | 4.20% | |
| | 15:00:00 | US | Housing Price Index (MoM) | Feb'19 | 0.30% | |
| | 16:00:00 | US | Consumer Confidence | Feb'19 | | |
| | 16:00:00 | US | Richmond Fed Manufacturing Index | | 16 | |
| | 17:30:00 | US | 52-Week Bill Auction | | 2.47% | |
| | 20:00:00 | US | 2-Year Note Auction | | 2.50% | |
| | 22:30:00 | US | API Weekly Crude Oil Stock | | -2.133M | |
| 27-Mar-19 | 11:40:00 | Germany | 10-y Bond Auction | | 0.17% | |
| | 13:00:00 | US | MBA Mortgage Applications | Feb'19 | 1.60% | |
| | 13:00:00 | UK | CBI Distributive Trades Survey - Realized (MoM) | Feb'19 | 0% | |
| | 14:30:00 | US | Current Account | Feb'19 | -124.8B | -132B |
| | 14:30:00 | US | Trade Balance | Feb'19 | -59.8B | -60B |
| | 14:30:00 | US | Goods Trade Balance | Feb'19 | -79.4B | |
| | 16:30:00 | US | EIA Crude Oil Stocks Change | | -9.589M | 6.75% |
| | 20:00:00 | US | 5-Year Note Auction | | 2.49% | |
| | 01:50:00 | Japan | Foreign Investment in Japan Stocks | Feb'19 | -1588.9B | |
| | 01:50:00 | Japan | Foreign Bond Investment | Feb'19 | -571.6B | |
| 28-Mar-19 | 09:00:00 | UK | Nationwide Housing Prices s.a (MoM) | Feb'19 | -0.10% | |
| | 09:00:00 | UK | Nationwide Housing Prices n.s.a (YoY) | Feb'19 | 0.40% | |
| | 10:00:00 | EU | M3 Money Supply (YoY) | Feb'19 | 3.80% | 3.90% |
| | 10:00:00 | EU | M3 Money Supply (3m) | Feb'19 | 3.90% | |
| | 10:00:00 | EU | Private Loans (YoY) | Feb'19 | 3.20% | |
| | 11:30:00 | SA | Producer Price Index (MoM) | Feb'19 | -0.80% | |
| | 11:30:00 | SA | Producer Price Index (YoY) | Feb'19 | 4.10% | |
| | 12:00:00 | EU | Industrial Confidence | Feb'19 | -0.4 | -0.4 |
| | 12:00:00 | EU | Business Climate | Feb'19 | 0.69 | |
| | 12:00:00 | EU | Economic Sentiment Indicator | Feb'19 | 106.1 | |
| | 12:00:00 | EU | Consumer Confidence | Feb'19 | -7.2 | |
| | 12:00:00 | EU | Services Sentiment | Feb'19 | 12.1 | |
| | 14:30:00 | US | Continuing Jobless Claims | | 1.75M | |
| | 14:30:00 | US | Initial Jobless Claims | | 221K | |
| | 14:30:00 | US | Gross Domestic Product Annualized | Q4 (Final) | 2.60% | 2.40% |
| | 14:30:00 | US | Gross Domestic Product Price Index | Q4 (Final) | | |
| | 14:30:00 | US | Personal Consumption Expenditures Prices (QoQ) | Feb'19 | 1.50% | |
| | 15:00:00 | Germany | Consumer Price Index (YoY) | Feb'19 | 1.50% | 1.50% |
| | 15:00:00 | SA | SARB Interest Rate Decision | | 6.75% | 6.75% |
| | 16:00:00 | US | Pending Home Sales (YoY) | Feb'19 | -2.30% | -1.50% |
| | 16:30:00 | US | EIA Natural Gas Storage Change | | -4B | |
| | 17:00:00 | US | Kansas Fed Manufacturing Activity | | -4 | |
| | 18:30:00 | US | 4-Week Bill Auction | | 2.47% | |
| | 20:00:00 | US | 7-Year Note Auction | | 2.54% | |
| | 01:30:00 | Japan | Tokyo Consumer Price Index (YoY) | Feb'19 | 0.60% | |
| | 01:30:00 | Japan | Unemployment Rate | Feb'19 | 2.50% | 2.50% |
| | 01:30:00 | Japan | Jobs / Applicants Ratio | Feb'19 | 1.63 | 1.63 |
| | 01:50:00 | Japan | Industrial Production (YoY) | Feb'19 | 0.30% | -1% |
| | 01:50:00 | Japan | Large Retailers' Sales | | | |
| | 01:50:00 | Japan | Retail Trade (YoY) | Feb'19 | 0.60% | 1.10% |
| 29-Mar-19 | 02:00:00 | UK | Brexit Day - UK leaves the EU | | | |
| | 02:01:00 | UK | GfK Consumer Confidence | Feb'19 | -13 | |
| | 07:00:00 | Japan | Housing Starts (YoY) | Feb'19 | 1.10% | 0.60% |
| | 07:00:00 | Japan | Construction Orders (YoY) | Feb'19 | 19.80% | -4% |
| | 07:00:00 | Japan | Annualized Housing Starts | Feb'19 | 0.872M | |
| | 08:00:00 | SA | Private Sector Credit | Feb'19 | 6.51% | 5.70% |
| | 08:00:00 | SA | M3 Money Supply (YoY) | Feb'19 | 5.09% | 5.76% |
| | 09:00:00 | Germany | Import Price Index (YoY) | Feb'19 | 0.80% | |
| | 09:00:00 | Germany | Retail Sales (YoY) | Feb'19 | 2.60% | 2% |
| | 10:55:00 | Germany | Unemployment Change | Feb'19 | -21K | |
| | 11:30:00 | UK | Net Lending to Individuals (MoM) | | -4.8B | |
| | 11:30:00 | UK | Gross Domestic Product (YoY) | Q4 (Final) | 1.30% | 1.30% |
| | 11:30:00 | UK | Gross Domestic Product (QoQ) | Q4 (Final) | 0.20% | 0.20% |
| | 11:30:00 | UK | Total Business Investment (YoY) | Feb'19 | -3.70% | |
| | 11:30:00 | UK | Mortgage Approvals | Feb'19 | 66.766K | 66.4K |
| | 11:30:00 | UK | M4 Money Supply (YoY) | Feb'19 | 0.50% | |
| | 11:30:00 | UK | Current Account | Feb'19 | -26.522B | |
| | 14:00:00 | SA | Trade Balance (in Rands) | Feb'19 | -13.08B | |
| | 14:30:00 | US | Personal Consumption Expenditures - Price Index (MoM) | Feb'19 | 0.10% | |
| | 14:30:00 | US | Personal Income (MoM) | Feb'19 | 0.10% | |
| | 14:30:00 | US | Personal Consumption Expenditures - Price Index (YoY) | Feb'19 | 1.70% | |
| | 14:30:00 | US | Personal Spending | Feb'19 | -0.50% | |
| | 15:45:00 | US | Chicago Purchasing Managers' Index | | 64.7 | |
| | 16:00:00 | US | Michigan Consumer Sentiment Index | | 97.8 | |
| | 16:00:00 | US | New Home Sales Change (MoM) | Feb'19 | -6.90% | 1.60% |
| | 16:00:00 | US | New Home Sales (MoM) | Feb'19 | 0.607M | 0.617M |
| | 19:00:00 | US | Baker Hughes US Oil Rig Count | | | |

| Major Central Banks Rate Decisions | | | |
|------------------------------------|--------------|-------------|-----------------------|
| Central Bank | Next Meeting | Last Change | Current Interest Rate |
| European Central Bank | 10-Apr-19 | 10-Mar-16 | 0.00% |
| Bank of Japan | 25-Apr-19 | 29-Jan-16 | -0.10% |
| Bank of England | 02-May-19 | 02-Aug-18 | 0.75% |
| Federal Reserve | 01-May-18 | 19-Dec-18 | 2.50% |
| SARB | 28-Mar-19 | 22-Nov-18 | 6.75% |