

SA MONEY MARKET REPORT

23 August 2019

THE PREVIOUS WEEK IN REVIEW

1. MONEY MARKET INTEREST RATES

SPOT RATES	12-Aug	16-Aug	23-Aug	Change
Repo Rate	6.50%	6.50%	6.50%	0.00%
Treasury Bill 91 days(D)	7.01%	7.00%	6.96%	-0.04%
Treasury Bill 91 days(Y)	7.14%	7.13%	7.09%	-0.04%
Treasury Bill 182days(D)	7.19%	7.13%	7.07%	-0.06%
Treasury Bill 182days(Y)	7.46%	7.39%	7.33%	-0.06%
Treasury Bill 273days(D)	7.12%	7.13%	7.11%	-0.02%
Treasury Bill 273days(Y)	7.52%	7.53%	7.51%	-0.02%
Treasury Bill 364days(Y)	7.55%	7.53%	7.48%	-0.05%
3 Month NCD	6.78%	6.78%	6.78%	0.00%
6 Month NCD	7.25%	7.25%	7.20%	-0.05%
9 Month NCD	7.43%	7.45%	7.35%	-0.10%
12 Month NCD	7.63%	7.63%	7.53%	-0.10%
18 Month NCD (YTM)	7.55%	7.54%	7.45%	-0.09%
24 Month NCD (YTM)	7.76%	7.60%	7.48%	-0.13%
36 Month NCD (YTM)	7.82%	7.75%	7.59%	-0.17%
R207 (YTM)	6.90%	6.90%	6.83%	-0.075%

MONEY MARKET RATES (NACQ)	12-Aug	16-Aug	23-Aug	Change
3 Month NCD	6.78%	6.78%	6.78%	0.00%
6 Month NCD	7.06%	7.06%	7.01%	-0.05%
9 Month NCD	7.23%	7.25%	7.16%	-0.09%
12 Month NCD	7.42%	7.42%	7.32%	-0.09%
18 Month NCD	7.35%	7.34%	7.25%	-0.09%
24 Month NCD	7.54%	7.39%	7.27%	-0.12%
36 Month NCD	7.60%	7.53%	7.38%	-0.16%
R 207	6.90%	6.90%	6.83%	-0.075%

MONEY MARKET LIQUIDITY	12-Aug	16-Aug	23-Aug	Change
Shortage (Rm)	56000	56000	56000	0
Notes (Rm)	149995	142952	139059	-3893
Reverse Repo (Rm)	0	0	0	0
Debentures (Rm)	48	19	0	-19
Liquidity Requirements (Rm)	56787	55955	55902	-53

2. JIBAR RATES (Nominal Terms)

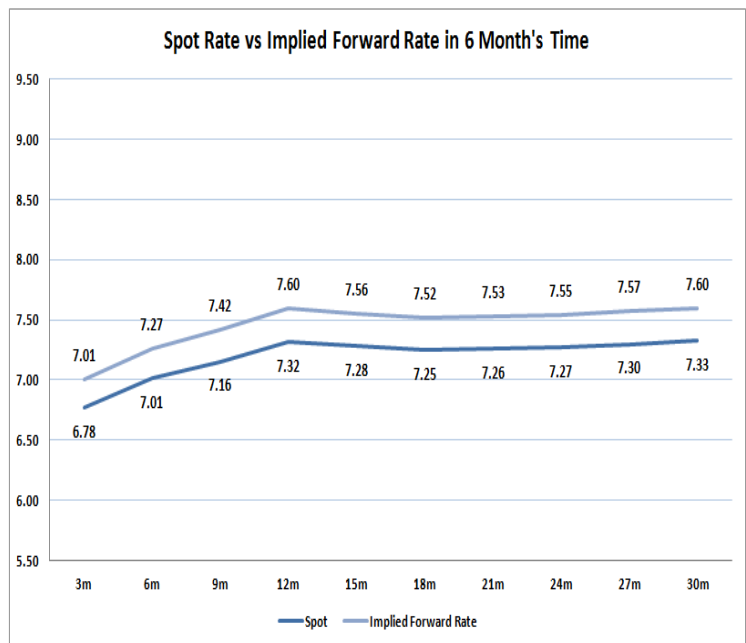
JIBAR (Nominal Terms)	12-Aug	16-Aug	23-Aug	Change
1 Month	6.67%	6.66%	6.65%	-0.01%
3 Month	6.84%	6.83%	6.83%	-0.01%
6 Month	7.33%	7.33%	7.28%	-0.05%
9 Month	7.46%	7.48%	7.44%	-0.03%
12 Month	7.68%	7.72%	7.59%	-0.13%

3. CURRENT AND FUTURE YIELD CURVES (NACQ)

In the graph below the implied forward rates in six months' time are plotted opposite the current spot rates for the corresponding number of months. The implied forward rates are derived from a break-even calculation approach.

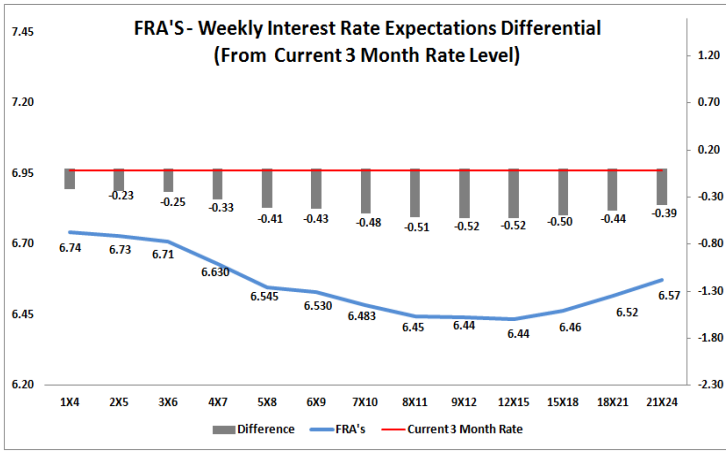
The rates represented in the line graphs below are in NACQ terms.

According to the break-even (forward/forward) calculation, the 12 and 18-month interest rates will be 7.60% and 7.52% respectively in six months time.



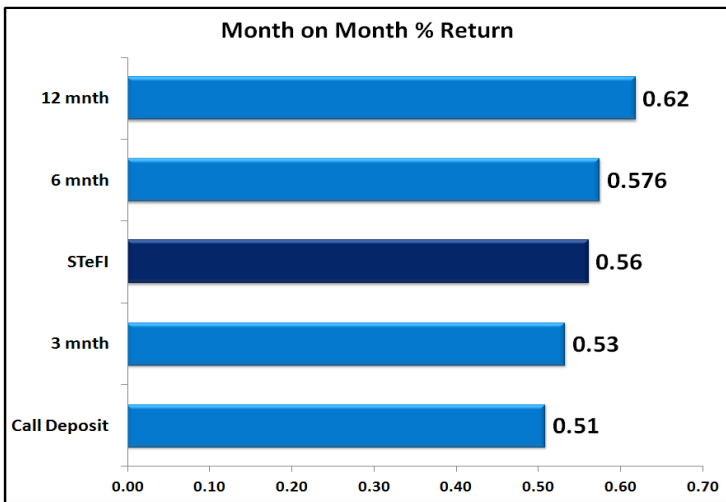
4. FRA RATES (NACQ)

FRA's	12-Aug	16-Aug	23-Aug	Change
1x4	6.84%	6.84%	6.74%	-0.09%
3x6	6.78%	6.78%	6.71%	-0.07%
6x9	6.66%	6.66%	6.53%	-0.13%
9x12	6.60%	6.61%	6.44%	-0.17%
12x15	6.61%	6.61%	6.44%	-0.18%
15x18	6.65%	6.65%	6.46%	-0.18%
18x21	6.70%	6.71%	6.52%	-0.19%
21x24	6.76%	6.78%	6.57%	-0.20%
24x27	6.81%	6.84%	6.63%	-0.21%
27x30	6.86%	6.91%	6.68%	-0.22%

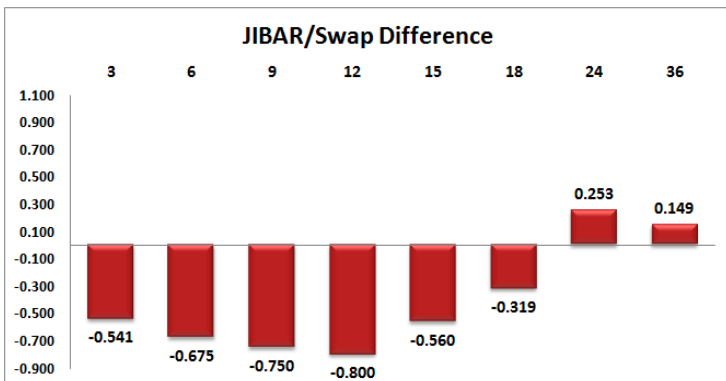
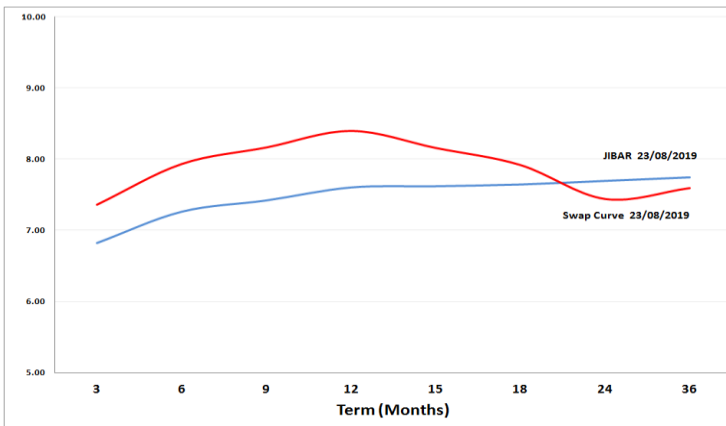


5. MONEY MARKET PERFORMANCE

STeFI (Month on Month) gained 0.56% with the best return 0.62% in the 12-Month area.



6. JIBAR and SWAPS - Curve



7. SARB AND NATIONAL TREASURY OPERATIONS

SARB DEBENTURES			
	Received	Allotted	Av. Rate
7 Days	0	0	0.000%
14 Days	0	0	0.000%
28 Days	0	0	0.000%
56 Days	0	0	0.000%

LONG TERM REVERSE REPO			
14Days			
	Allotted	Av. Rate	

TREASURY BILLS			
	Received	Allotted	Av. Rate
91 Days	R5928m	R2400m	7.09%
182 Days	R8863m	R2445m	7.33%
273 Days	R4630m	R2950m	7.51%

8. THE WEEK AHEAD

Date	Time	Country	Event	Month	Previous	Forecast
25-Aug-19 02:00:00 EU G7 Meeting						
26-Aug-19 07:00:00 Japan Leading Economic Index Jul'19 93.3						
07:00:00 Japan Coincident Index Jul'19 100.4						
10:00:00 Germany IFO - Business Climate Jul'19 95.7 97.1						
14:30:00 US Chicago Fed National Activity Index Jul'19 -0.02						
14:30:00 US Durable Goods Orders Jul'19 2% 1%						
14:30:00 US Nondefense Capital Goods Orders ex Aircraft Jul'19 1.90% 0%						
14:30:00 US Durable Goods Orders ex Transportation Jul'19 1.20% 0.20%						
14:30:00 US Durable Goods Orders ex Defense Jul'19 3.10%						
16:30:00 US Dallas Fed Manufacturing Business Index Jul'19 -6.3						
01:50:00 Japan Large Retailers' Sales Jul'19 -0.50%						
27-Aug-19 08:00:00 Germany Gross Domestic Product (YoY) Q2 (Est) 0%						
08:00:00 Germany Gross Domestic Product (QoQ) Q2 (Est) -0.10%						
08:00:00 Germany Gross Domestic Product w.d.a (YoY) Q2 (Est) 0.40%						
14:55:00 US Redbook Index (YoY) 4.90%						
14:55:00 US Redbook Index (MoM) -1.70%						
15:00:00 US S&P/Case-Shiller Home Price Indices (YoY) 2.40%						
15:00:00 US Housing Price Index (MoM) Jun'19 0.10%						
16:00:00 US Consumer Confidence Jul'19 -12						
16:00:00 US Richmond Fed Manufacturing Index Jul'19 -12						
22:30:00 US API Weekly Crude Oil Stock -359.6B						
01:00:00 UK BRC Shop Price Index (YoY) -0.10%						
28-Aug-19 08:00:00 Germany GfK Consumer Confidence Survey Jul'19 9.7 9.7						
10:00:00 EU M3 Money Supply (3m) Jul'19 4.70% 4.70%						
10:00:00 EU Private Loans (YoY) Jul'19 3.30%						
10:00:00 EU M3 Money Supply (YoY) Jul'19 4.50%						
11:40:00 Germany 10-y Bond Auction Jul'19 -0.41%						
13:00:00 US MBA Mortgage Applications -0.90%						
16:30:00 US EIA Crude Oil Stocks Change -2.732M						
01:50:00 Japan Foreign Investment in Japan Stocks -359.6B						
01:50:00 Japan Foreign Bond Investment 499.7B						
29-Aug-19 07:00:00 Japan Consumer Confidence Index Jul'19 37.8						
08:00:00 Germany Import Price Index (MoM) Jul'19 -1.40% -0.80%						
08:00:00 Germany Import Price Index (YoY) Jul'19 -2% -1.50%						
09:55:00 Germany Unemployment Rate s.a. Jul'19 5%						
11:00:00 EU Consumer Confidence Jul'19 -7.1						
11:00:00 EU Economic Sentiment Indicator Jul'19 102.7 102.6						
11:00:00 EU Business Climate Jul'19 -0.12 0.08						
11:00:00 EU Industrial Confidence Jul'19 -7.4 -7						
11:30:00 SA Producer Price Index (YoY) Jul'19 5.80% 5.80%						
11:30:00 SA Producer Price Index (MoM) Jul'19 0.40% 0.40%						
14:00:00 Germany Consumer Price Index (YoY) Jul'19 1.70% 1.50%						
14:00:00 Germany Consumer Price Index (MoM) Jul'19 0.50% 0.30%						
14:30:00 US Continuing Jobless Claims 1.674M						
14:30:00 US Initial Jobless Claims 209K						
14:30:00 US Gross Domestic Product Annualized Q2 (Est) 2.10% 2%						
14:30:00 US Gross Domestic Product Price Index Q2 (Est) 2.50% 2.50%						
14:30:00 US Wholesale Inventories Jul'19 0%						
14:30:00 US Goods Trade Balance Jul'19 -74.17B						
14:30:00 US Personal Consumption Expenditures Prices (QoQ) Jul'19 2.30%						
16:00:00 US Pending Home Sales (YoY) Jul'19 1.60%						
16:00:00 US Pending Home Sales (MoM) Jul'19 2.80% 0.50%						
16:30:00 US EIA Natural Gas Storage Change 59B						
01:01:00 UK GfK Consumer Confidence Jul'19 -11						
01:30:00 Japan Tokyo Consumer Price Index (YoY) Jul'19 0.90%						
01:30:00 Japan Unemployment Rate Jul'19 2.30% 2.40%						
01:30:00 Japan Jobs / Applicants Ratio Jul'19 1.61 1.62						
01:50:00 Japan Industrial Production (YoY) Jul'19 -3.80%						
01:50:00 Japan Industrial Production (MoM) Jul'19 -3.30% -2%						
01:50:00 Japan Retail Trade (YoY) Jul'19 0.50% 0.20%						
01:50:00 Japan Retail Trade s.a (MoM) Jul'19 0%						
30-Aug-19 07:00:00 Japan Construction Orders (YoY) Jul'19 -4.20%						
07:00:00 Japan Housing Starts (YoY) Jul'19 0.30% -3.40%						
07:00:00 Japan Annualized Housing Starts Jul'19 0.922M						
08:00:00 UK Nationwide Housing Prices n.s.a (YoY) Jul'19 0.30%						
08:00:00 Germany Retail Sales (YoY) Jul'19 -1.60%						
08:00:00 SA M3 Money Supply (YoY) Jul'19 8.99%						
08:00:00 SA Private Sector Credit Jul'19 6.1% 7.07%						
10:30:00 UK Net Lending to Individuals (MoM) Jul'19 4.8B						
10:30:00 UK Consumer Credit Jul'19 1.046B						
10:30:00 UK Mortgage Approvals Jul'19 66.44K 65.75K						
10:30:00 UK M4 Money Supply (YoY) Jul'19 2.30%						
11:00:00 EU Unemployment Rate Jul'19 7.50% 7.50%						
11:00:00 EU Consumer Price Index (YoY) Jul'19 1% 1.10%						
14:00:00 SA Trade Balance (In Rands) Jul'19 4.42B						
14:30:00 US Personal Income (MoM) Jul'19 0.40% 0.30%						
14:30:00 US Personal Consumption Expenditures - Price Index (YoY) Jul'19 1.40%						
14:30:00 US Personal Spending Jul'19 0.30% 0.50%						
15:45:00 US Chicago Purchasing Managers' Index 44.4 47						
16:00:00 US Michigan Consumer Sentiment Index 92.1 98.5						
19:00:00 US Baker Hughes US Oil Rig Count						

Major Central Banks Rate Decisions			
Central Bank	Next Meeting	Last Change	Current Interest Rate
European Central Bank	12-Sep-19	10-Mar-16	0.00%
Bank of Japan	19-Sep-19	29-Jan-16	-0.10%
Bank of England	19-Sep-19	02-Aug-18	0.75%
Federal Reserve	18-Sep-18	31-Jul-19	2.25%
SARB	19-Sep-19	18-Jul-19	6.50%