

SA MONEY MARKET REPORT

25 September 2020

THE PREVIOUS WEEK IN REVIEW

1. MONEY MARKET INTEREST RATES

SPOT RATES	11-Sep	18-Sep	25-Sep	Change
Repo Rate	3.50%	3.50%	3.50%	0.00%
Treasury Bill 91 days(D)	3.43%	3.46%	3.47%	0.01%
Treasury Bill 91 days(Y)	3.46%	3.49%	3.50%	0.01%
Treasury Bill 182days(D)	3.59%	3.64%	3.67%	0.03%
Treasury Bill 182days(Y)	3.65%	3.71%	3.74%	0.03%
Treasury Bill 273days(D)	3.60%	3.63%	3.75%	0.12%
Treasury Bill 273days(Y)	3.70%	3.73%	3.86%	0.13%
Treasury Bill 364days(Y)	3.73%	3.75%	3.82%	0.07%
3 Month NCD	3.30%	3.33%	3.30%	-0.03%
6 Month NCD	3.33%	3.38%	3.38%	0.00%
9 Month NCD	3.40%	3.45%	3.45%	0.00%
12 Month NCD	3.53%	3.58%	3.60%	0.03%
18 Month NCD (YTM)	3.68%	3.70%	3.74%	0.04%
24 Month NCD (YTM)	3.98%	4.00%	4.04%	0.04%
36 Month NCD (YTM)	4.46%	4.49%	4.56%	0.07%
R208 (YTM)	3.59%	3.77%	3.57%	-0.200%

MONEY MARKET RATES (NACQ)	11-Sep	18-Sep	25-Sep	Change
3 Month NCD	3.30%	3.33%	3.30%	-0.03%
6 Month NCD	3.28%	3.33%	3.33%	0.00%
9 Month NCD	3.36%	3.41%	3.41%	0.00%
12 Month NCD	3.48%	3.53%	3.55%	0.02%
18 Month NCD	3.63%	3.65%	3.69%	0.04%
24 Month NCD	3.92%	3.94%	3.98%	0.04%
36 Month NCD	4.39%	4.42%	4.48%	0.07%
R 208	3.59%	3.77%	3.57%	-0.200%

MONEY MARKET LIQUIDITY	11-Sep	18-Sep	25-Sep	Change
Shortage (Rm)	34400	30900	25250	-5650
Notes (Rm)	172633	164498	169165	4667
Reverse Repo (Rm)	500	500	500	0
Debentures (Rm)	8415	7731	7656	-75
Liquidity Requirements (Rm)	35736	29081	21870	-7211

2. JIBAR RATES (Nominal Terms)

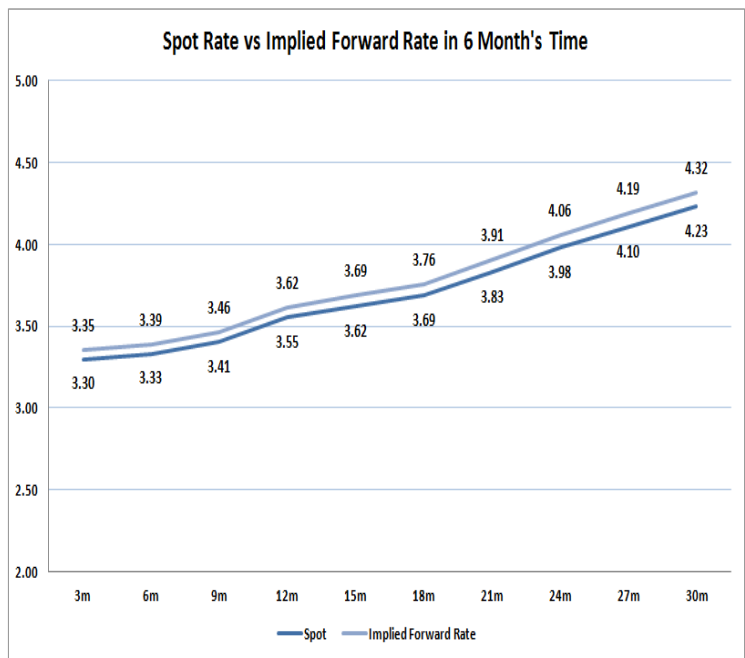
JIBAR (Nominal Terms)	11-Sep	18-Sep	25-Sep	Change
1 Month	3.33%	3.31%	3.34%	0.03%
3 Month	3.38%	3.36%	3.36%	0.00%
6 Month	3.44%	3.40%	3.43%	0.02%
9 Month	3.51%	3.46%	3.51%	0.05%
12 Month	3.63%	3.58%	3.63%	0.06%

3. CURRENT AND FUTURE YIELD CURVES (NACQ)

In the graph below the implied forward rates in six months' time are plotted opposite the current spot rates for the corresponding number of months. The implied forward rates are derived from a break-even calculation approach.

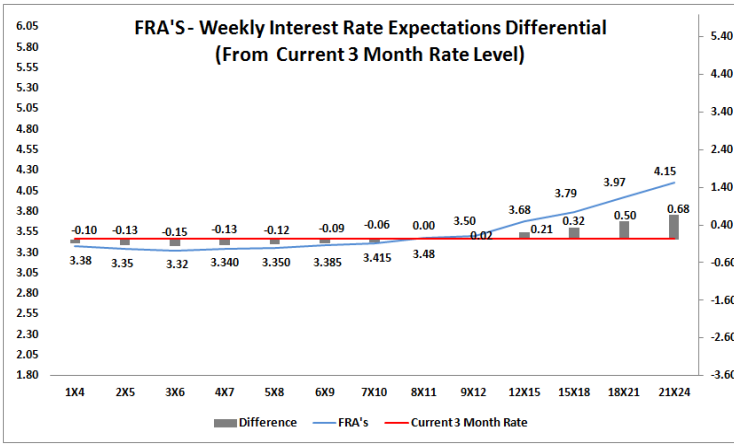
The rates represented in the line graphs below are in NACQ terms.

According to the break-even (forward/forward) calculation, the 12 and 18-month interest rates will be 3.62% and 3.76% respectively in six months time.



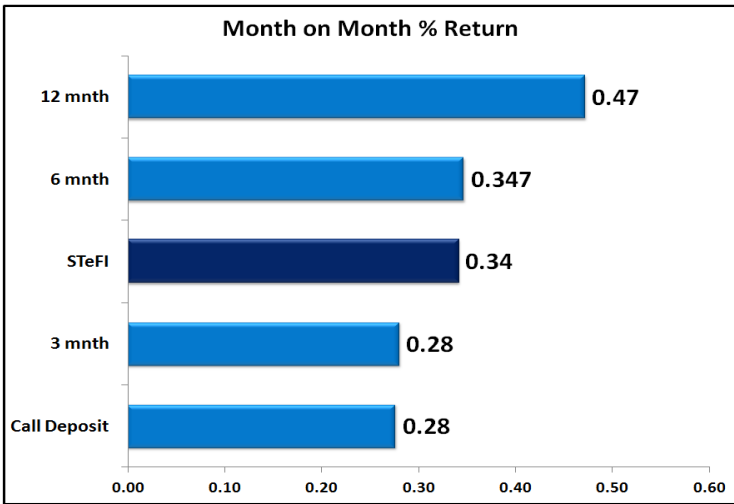
4. FRA RATES (NACQ)

FRA's	11-Sep	18-Sep	25-Sep	Change
1x4	3.30%	3.39%	3.38%	-0.01%
3x6	3.24%	3.33%	3.32%	-0.01%
6x9	3.32%	3.38%	3.39%	0.01%
9x12	3.44%	3.49%	3.50%	0.00%
12x15	3.54%	3.63%	3.68%	0.04%
15x18	3.72%	3.75%	3.79%	0.04%
18x21	3.88%	3.91%	3.97%	0.06%
21x24	4.04%	4.06%	4.15%	0.09%
24x27	4.20%	4.22%	4.33%	0.12%
27x30	4.37%	4.37%	4.51%	0.14%

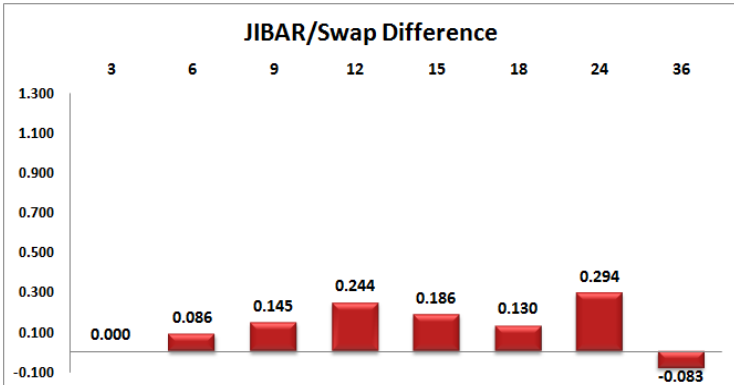
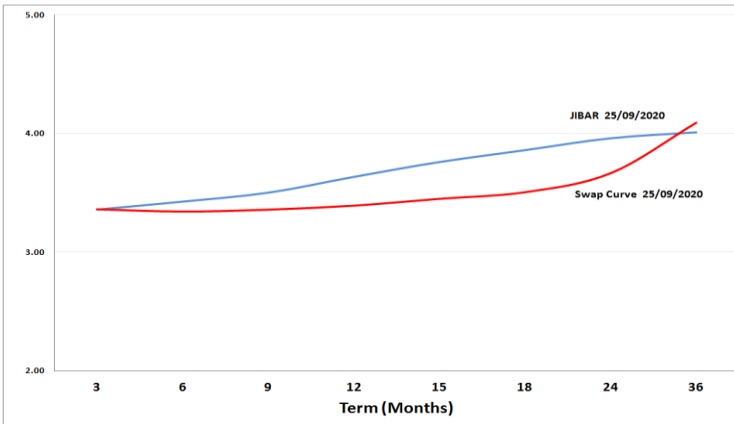


5. MONEY MARKET PERFORMANCE

STeFI (Month on Month) gained 0.34% with the best return 0.47% in the 12-Month area.



6. JIBAR and SWAPS - Curve



7. SARB AND NATIONAL TREASURY OPERATIONS

SARB DEBENTURES			
	Received	Allotted	Av. Rate
7 Days	3098	3098	3.400%
14 Days	50	50	3.420%
28 Days	828	828	3.410%
56 Days	0	0	0.000%

LONG TERM REVERSE REPO			
14 Days			
	Allotted	Av. Rate	

56 Days			
	Allotted	Av. Rate	

TREASURY BILLS			
	Received	Allotted	Av. Rate
91 Days	R4665m	R1400m	3.50%
182 Days	R7142m	R3070m	3.74%
273 Days	R5345m	R4040m	3.86%

8. THE WEEK AHEAD

Date	Time	Country	Event	Month	Previous	Consensus	Forecast
28-Sep-20	07:00:00	Japan	Coincident Index Final	Jul'20	74.4	76.2	76.2
	07:00:00	Japan	Leading Economic Index Final	Jul'20	83.8	86.9	86.9
	11:30:00	SA	PPI MoM	Aug'20	1.20%		0.70%
	11:30:00	SA	PPI YoY	Aug'20	1.90%		2.10%
	16:30:00	US	Dallas Fed Manufacturing Index	Sep'20	8		5
	17:30:00	US	3-Month Bill Auction		0.10%		
	17:30:00	US	6-Month Bill Auction		0.11%		
29-Sep-20	01:30:00	Japan	Tokyo CPI YoY	Sep'20	0.30%		0.30%
	01:30:00	Japan	Tokyo Core CPI YoY	Sep'20	-0.30%		-0.10%
	01:50:00	Japan	BoJ Summary of Opinions				
	10:30:00	UK	BoE Consumer Credit	Aug'20	£1.2B		£1.0B
	10:30:00	UK	Net Lending to Individuals MoM	Aug'20	£3.9B		£3.2B
	11:00:00	EU	Industrial Sentiment	Sep'20	-12.7		-16
	11:00:00	EU	Services Sentiment	Sep'20	-17.2		-20
	12:00:00	Germany	Bundesbank Mauderer Speech				
	14:00:00	Germany	Inflation Rate YoY Prel	Sep'20	0.00%		-0.20%
	14:30:00	US	Goods Trade Balance Adv	Aug'20	-\$79.32B		-\$81B
	14:30:00	US	Wholesale Inventories MoM Adv	Aug'20	-0.30%		-0.20%
	14:55:00	US	Redbook MoM 26/SEP		-0.90%		
	14:55:00	US	Redbook YoY 26/SEP		1.50%		
	16:00:00	US	CB Consumer Confidence	Sep'20	84.8	90	83
	18:00:00	Germany	Bundesbank Mauderer Speech				
	22:30:00	US	API Crude Oil Stock Change 25/SEP		0.691M		
30-Sep-20	01:50:00	Japan	Retail Sales YoY	Aug'20	-2.80%		2.00%
	03:00:00	China	NBS Manufacturing PMI	Sep'20	51		51.4
	03:45:00	China	Caixin Manufacturing PMI	Sep'20	53.1		53.4
	07:00:00	Japan	Housing Starts YoY	Aug'20	-11.40%		-6.20%
	07:00:00	Japan	Construction Orders YoY	Aug'20	-22.90%		-12.00%
	08:00:00	Germany	Retail Sales YoY	Aug'20	4.20%		2.90%
	08:00:00	Germany	Import Prices YoY	Aug'20	-4.60%		-3.80%
	08:00:00	SA	M3 Money Supply YoY	Aug'20	10.46%		
	08:00:00	SA	Private Sector Credit YoY	Aug'20	5.12%		5.00%
	08:00:00	UK	GDP Growth Rate QoQ Final	Q2	-2.20%		-20.40%
	08:00:00	UK	GDP Growth Rate YoY Final	Q2	-1.70%		-21.70%
	08:00:00	UK	Current Account	Q2	£-21.1B		£-16.2B
	08:00:00	UK	Nationwide Housing Prices YoY	Sep'20	3.70%		3.00%
	09:55:00	Germany	Unemployment Rate	Sep'20	6.40%		6.50%
	10:00:00	SA	Inflation Rate YoY	Aug'20	3.20%		3.40%
	10:00:00	SA	Inflation Rate MoM	Aug'20	1.30%		0.70%
	10:30:00	UK	BoE FPC Meeting				
	11:00:00	EU	Inflation Rate YoY Flash	Sep'20	-0.20%		-0.50%
	11:00:00	EU	Inflation Rate MoM Flash	Sep'20	-0.40%		-0.10%
	11:40:00	Germany	5-Year Bobl Auction		-0.69%		
	13:00:00	US	MBA 30-Year Mortgage Rate 25/SEP		3.10%		
	13:00:00	US	MBA Mortgage Applications 25/SEP		6.80%		
	13:30:00	Germany	Bundesbank Wuermeling Speech				
	14:00:00	SA	Balance of Trade		ZAR37.42B		ZAR18B
	14:15:00	US	ADP Employment Change SEP	Sep'20	428K	600K	300K
	14:30:00	US	GDP Growth Rate QoQ Final	Q2	-5.00%	-31.70%	-33.00%
	14:30:00	US	GDP Price Index QoQ Final	Q2	1.70%	-2.30%	-2.30%
	16:00:00	US	Pending Home Sales YoY	Aug'20	15.50%		10.00%
	16:00:00	US	Pending Home Sales MoM	Aug'20	5.90%		4.00%
	16:30:00	US	EIA Crude Oil Stocks Change 25/SEP		-1.639M	-2.325M	
	16:30:00	US	EIA Gasoline Stocks Change 25/SEP		-4.025M	-0.648M	
01-Oct-20	01:50:00	Japan	Tankan Large Manufacturers Index Q3	Sep'20	-34	-23	-26
	02:00:00	US	Total Vehicle Sales	Sep'20	15.2M		
	02:30:00	Japan	Jibun Bank Manufacturing PMI Final	Sep'20	47.2	47.3	47.3
	11:00:00	EU	Unemployment Rate	Aug'20	7.90%		8.40%
	11:00:00	EU	PPI MoM	Aug'20	0.60%		
	11:00:00	EU	PPI YoY	Aug'20	-3.30%		-2.60%
	11:00:00	SA	ABSA Manufacturing PMI	Sep'20	57.3		58.4
	13:30:00	US	Challenger Job Cuts	Sep'20	115.762K		120K
	14:00:00	SA	Total New Vehicle Sales	Sep'20	33.515K		35K
	14:30:00	US	Personal Spending MoM	Aug'20	1.90%	0.70%	1.30%
	14:30:00	US	Personal Income MoM	Aug'20	0.40%	0.10%	0.20%
	14:30:00	US	Initial Jobless Claims 26/SEP		870K		880K
	14:30:00	US	Jobless Claims 4-Week Average 26/SEP		878.25K		870K
	14:30:00	US	Continuing Jobless Claims 19/SEP		12580K		12300K
	16:00:00	US	Construction Spending MoM	Aug'20	0.10%	0.80%	0.20%
	16:30:00	US	EIA Natural Gas Stocks Change 25/SEP		668bcf		
	17:30:00	US	4-Week Bill Auction		0.08%		
	17:30:00	US	8-Week Bill Auction		0.09%		
02-Oct-20	01:30:00	Japan	Unemployment Rate	Aug'20	2.90%		3.20%
	10:00:00	Germany	Bundesbank Wuermeling Speech				
	14:30:00	US	Non Farm Payrolls	Sep'20	1371K	875K	1200K
	14:30:00	US	Unemployment Rate	Sep'20	8.40%	8.30%	8.40%
	14:30:00	US	Average Hourly Earnings MoM	Sep'20	0.40%	0.20%	0.20%
	14:30:00	US	Average Weekly Hours	Sep'20	34.6	34.6	34.6
	14:30:00	US	Average Hourly Earnings YoY	Sep'20	4.70%	4.60%	4.60%
	14:30:00	US	Government Payrolls	Sep'20	344K		100K
	14:30:00	US	Manufacturing Payrolls	Sep'20	29K	25K	30K
	14:30:00	US	Participation Rate	Sep'20	61.70%		61.50%
	14:30:00	US	Nonfarm Payrolls Private	Sep'20	1027K	913K	900K
	15:45:00	US	ISM New York Index	Sep'20	42.9		42
	16:00:00	US	Factory Orders MoM	Aug'20	6.40%	1.50%	5.00%
	16:00:00	US	Michigan Inflation Expectations Final	Sep'20	3.10%		2.70%
	16:00:00	US	Factory Orders ex Transportation	Aug'20	2.10%		1.50%
	19:00:00	US	Baker Hughes Total Rig Count 02/OCT				
	19:00:00	US	Baker Hughes Oil Rig Count 02/OCT				

Major Central Banks Rate Decisions			
Central Bank	Next Meeting	Last Change	Current Interest Rate
European Central Bank	29-Oct-20	10-Mar-16	0.00%
Bank of Japan	29-Oct-20	29-Jan-16	-0.10%
Bank of England	05-Nov-20	19-Mar-20	0.10%
Federal Reserve	05-Nov-20	15-Mar-20	0.25%
SARB	19-Nov-20	21-May-20	3.50%